

# Collar



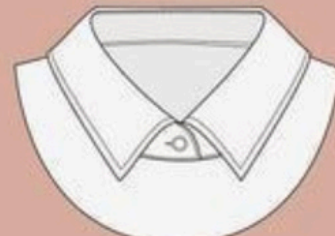
# COLLARS

Fashion Flat Set

11 editable Adobe Illustrator flats



Peter Pan



Basic Collar



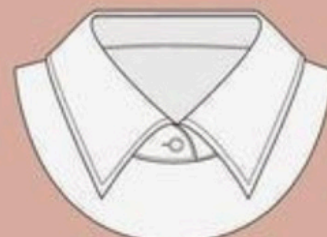
Round Collar



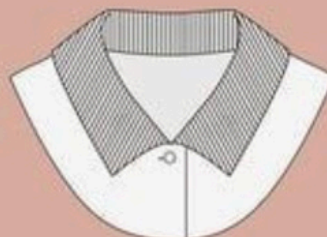
Spread Collar



Narrow Collar



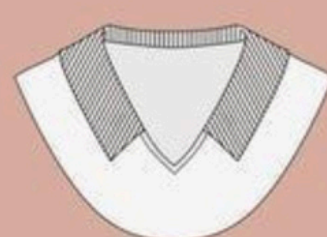
Pointed Collar



Polo



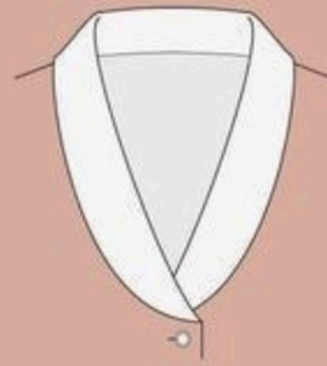
Flat Collar



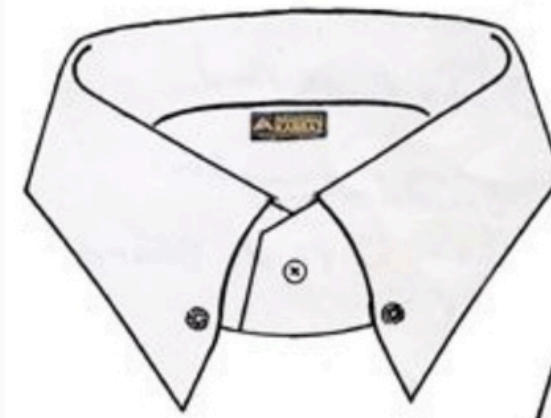
Johnny



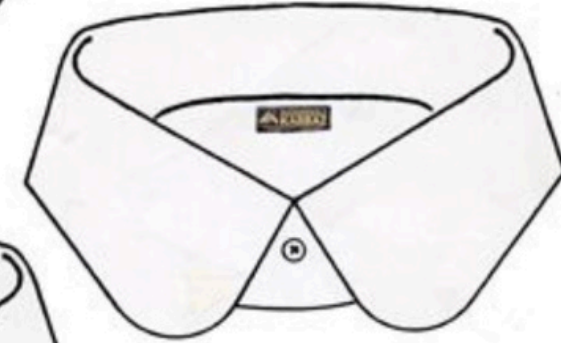
Pussy Bow



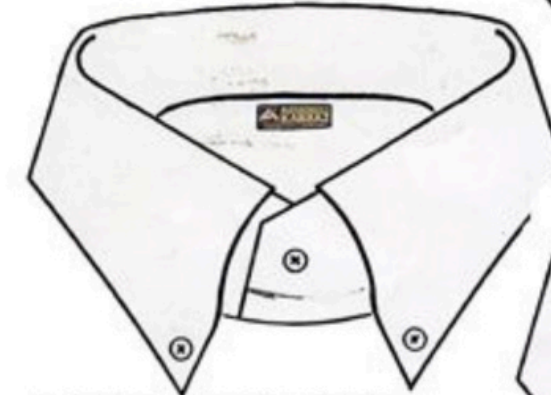
Shawl



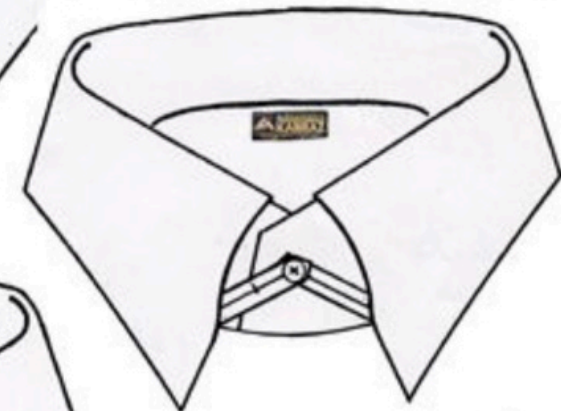
• EYELETS 'ET'



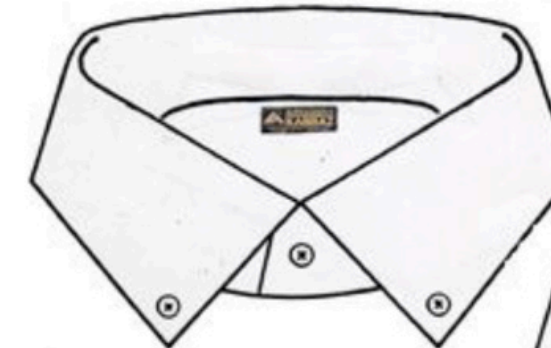
• TRADITIONAL 'TR' ROUND



• 'BROOKS BROTHERS' TYPE BUTTODOWN



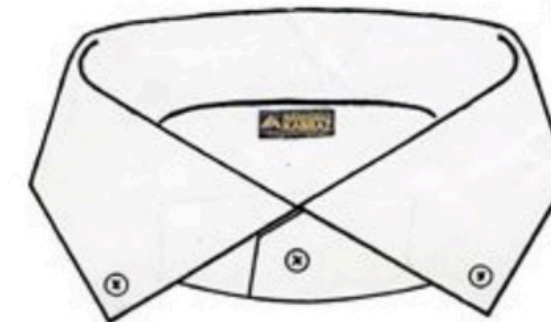
• TAB COLLAR



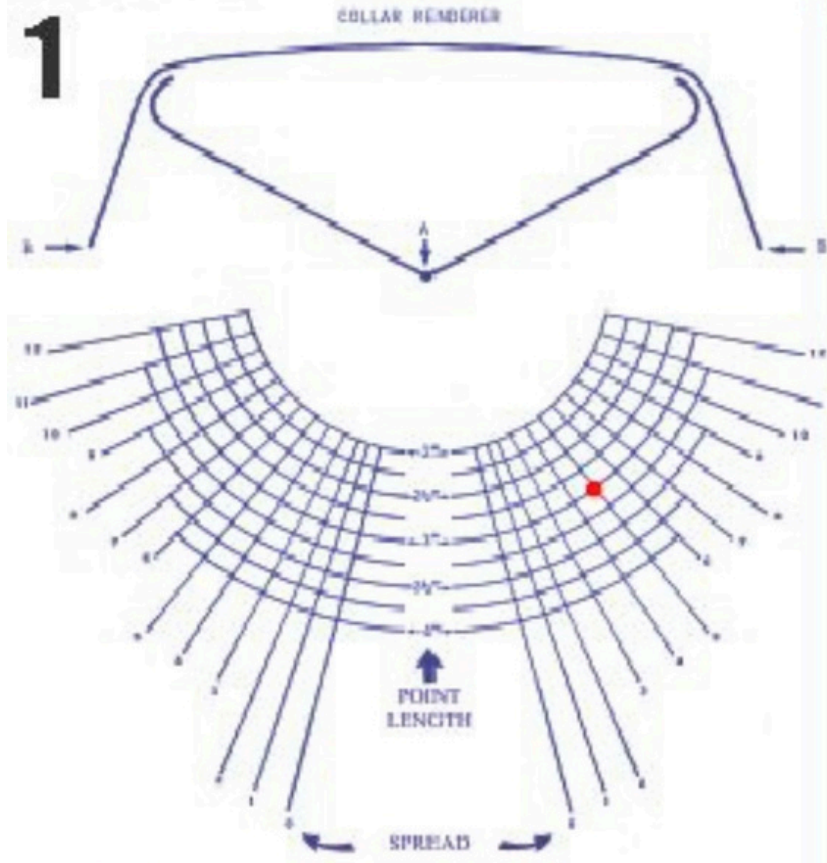
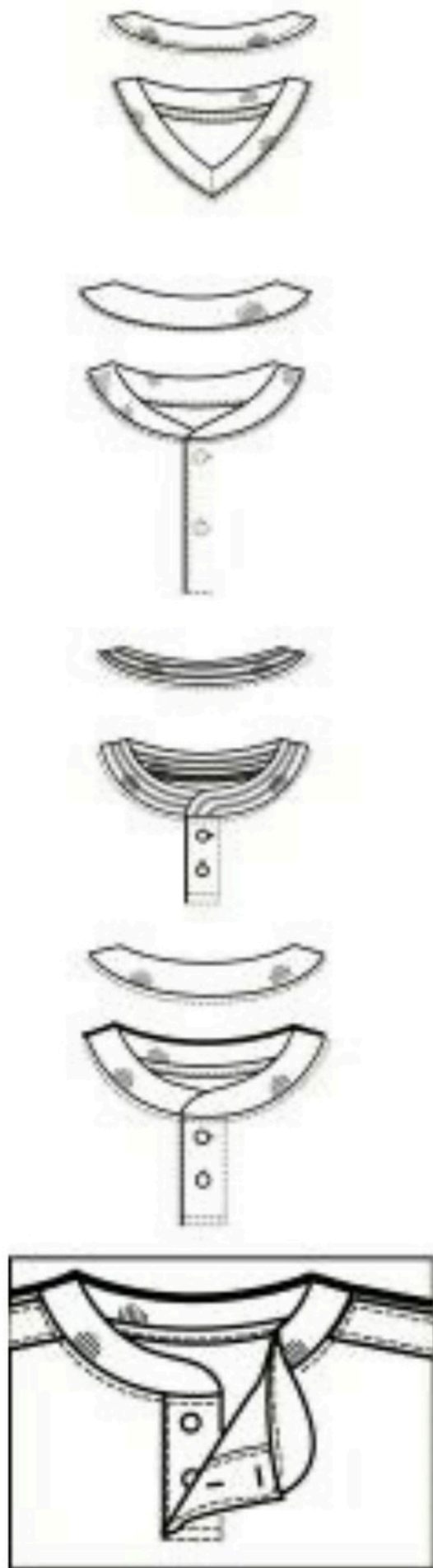
• DRESS BUTTODOWN



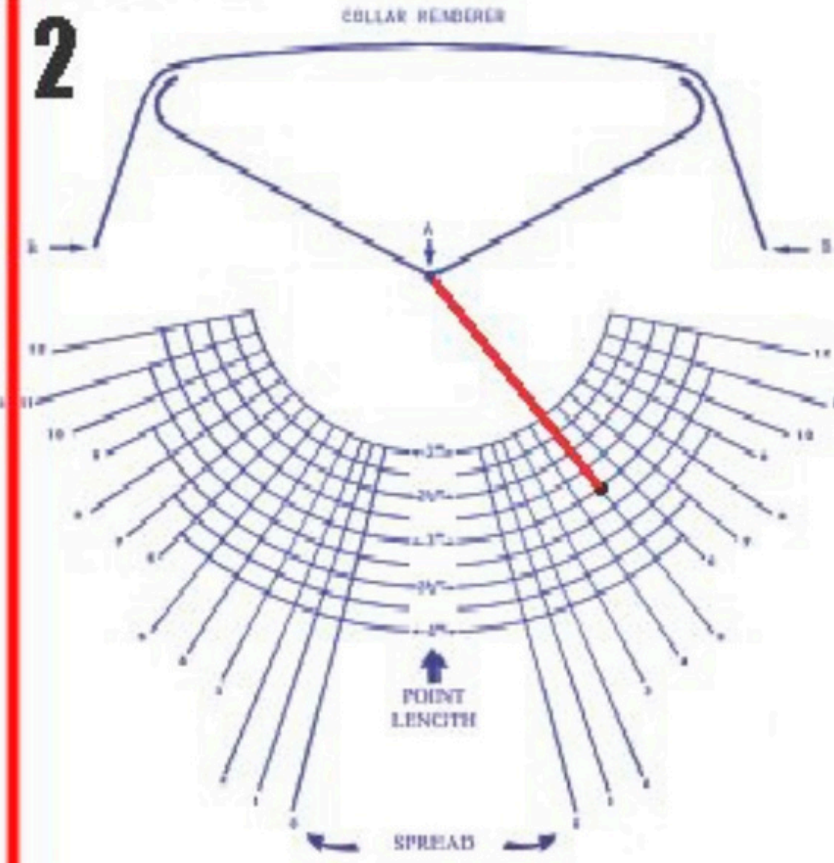
• DRESS-B WITH VANISHING BAND'



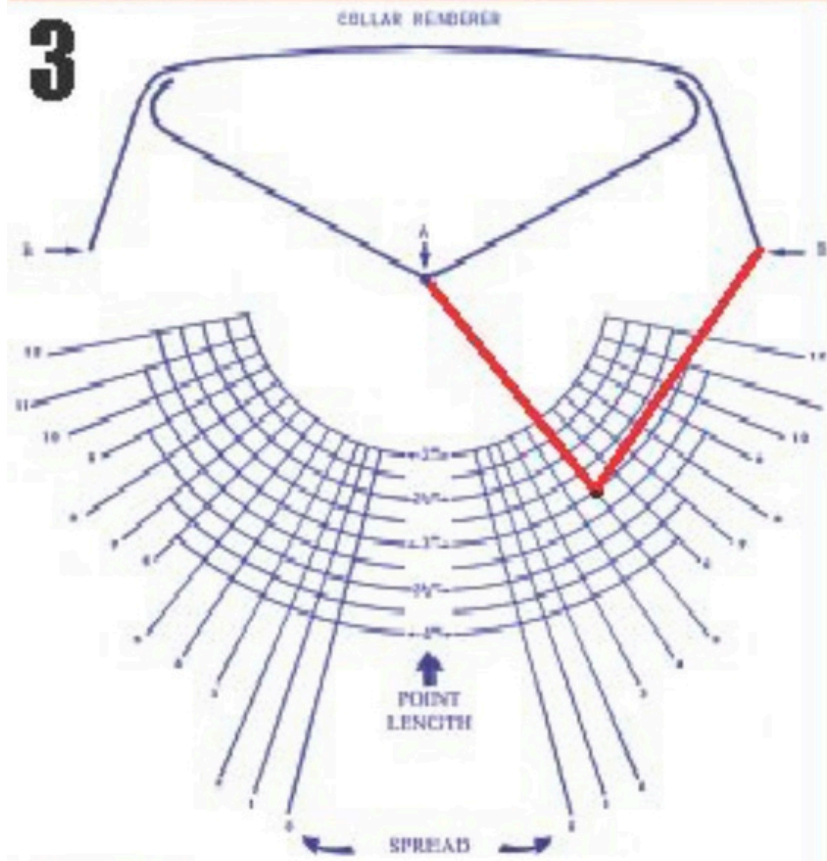
# assortment NECKLINE



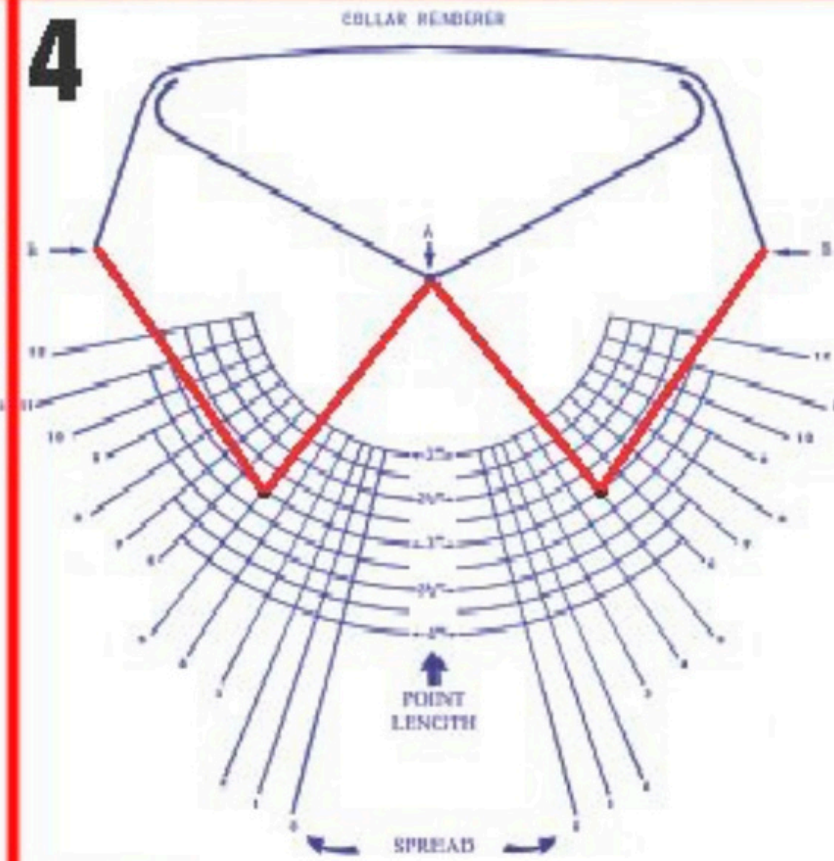
**INSTRUCTIONS!**  
 MAKE A TENTATIVE SELECTION OF SPREAD AND POINT LENGTH. ON THE RIGHT SIDE, LOCATE THE INTERSECTION OF THE TWO AND PLACE A DOT ON THAT POINT USING A RULER AND FELT TIP PEN, CONNECT THE DOT, FIRST TO POINT "A" AND THEN TO POINT "B". REPEAT THE PROCESS ON THE LEFT SIDE OF THE RENDERING.  
Copyright © 1997 Alexander S. Kaban. All Rights Reserved. Permission is granted for Ask Andy About Clothes and Style Forum members to make up to five copies for their personal use in designing shirts for themselves. Other reproduction strictly forbidden.



**INSTRUCTIONS!**  
 MAKE A TENTATIVE SELECTION OF SPREAD AND POINT LENGTH. ON THE RIGHT SIDE, LOCATE THE INTERSECTION OF THE TWO AND PLACE A DOT ON THAT POINT USING A RULER AND FELT TIP PEN, CONNECT THE DOT, FIRST TO POINT "A" AND THEN TO POINT "B". REPEAT THE PROCESS ON THE LEFT SIDE OF THE RENDERING.  
Copyright © 1997 Alexander S. Kaban. All Rights Reserved. Permission is granted for Ask Andy About Clothes and Style Forum members to make up to five copies for their personal use in designing shirts for themselves. Other reproduction strictly forbidden.

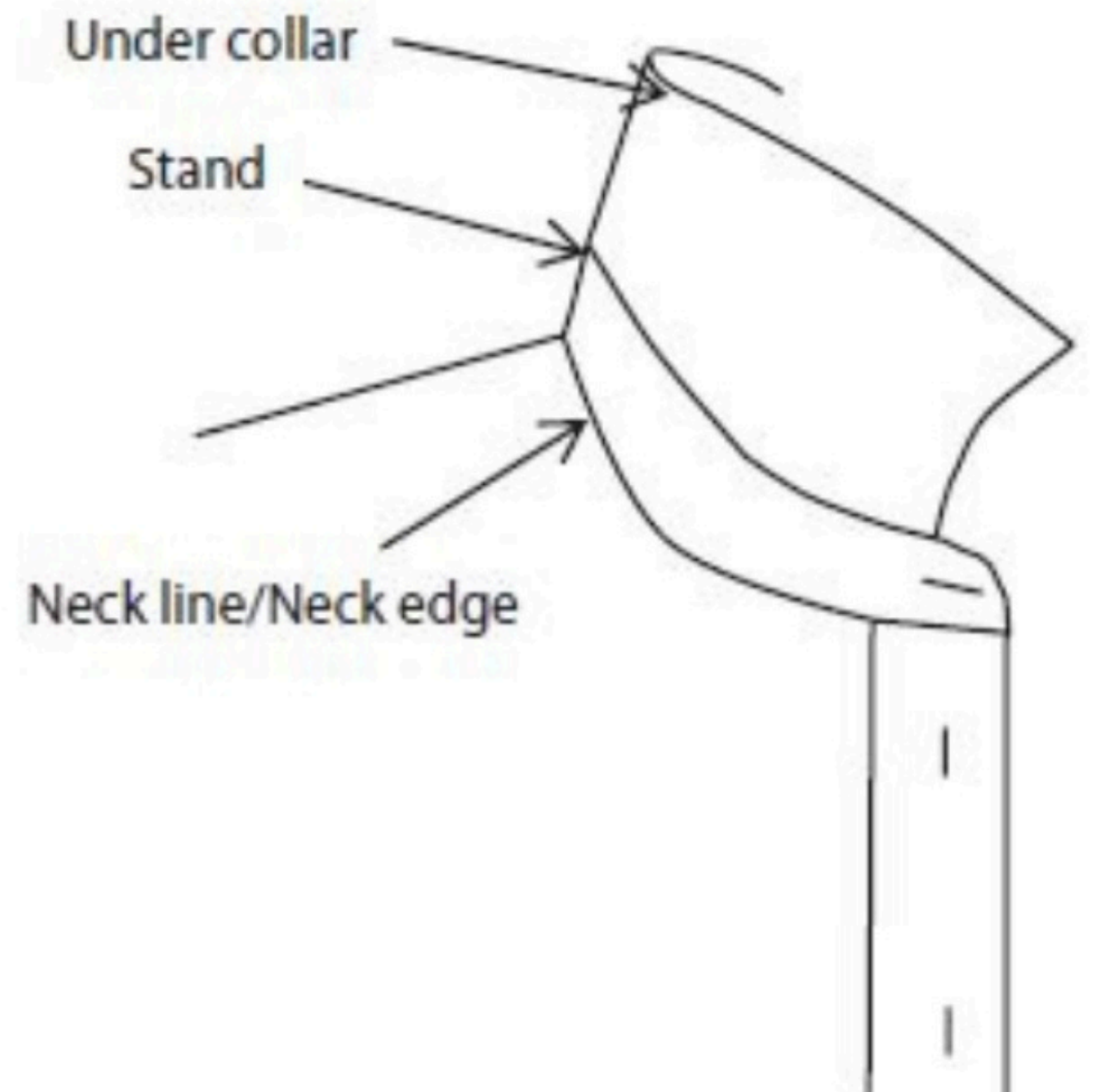
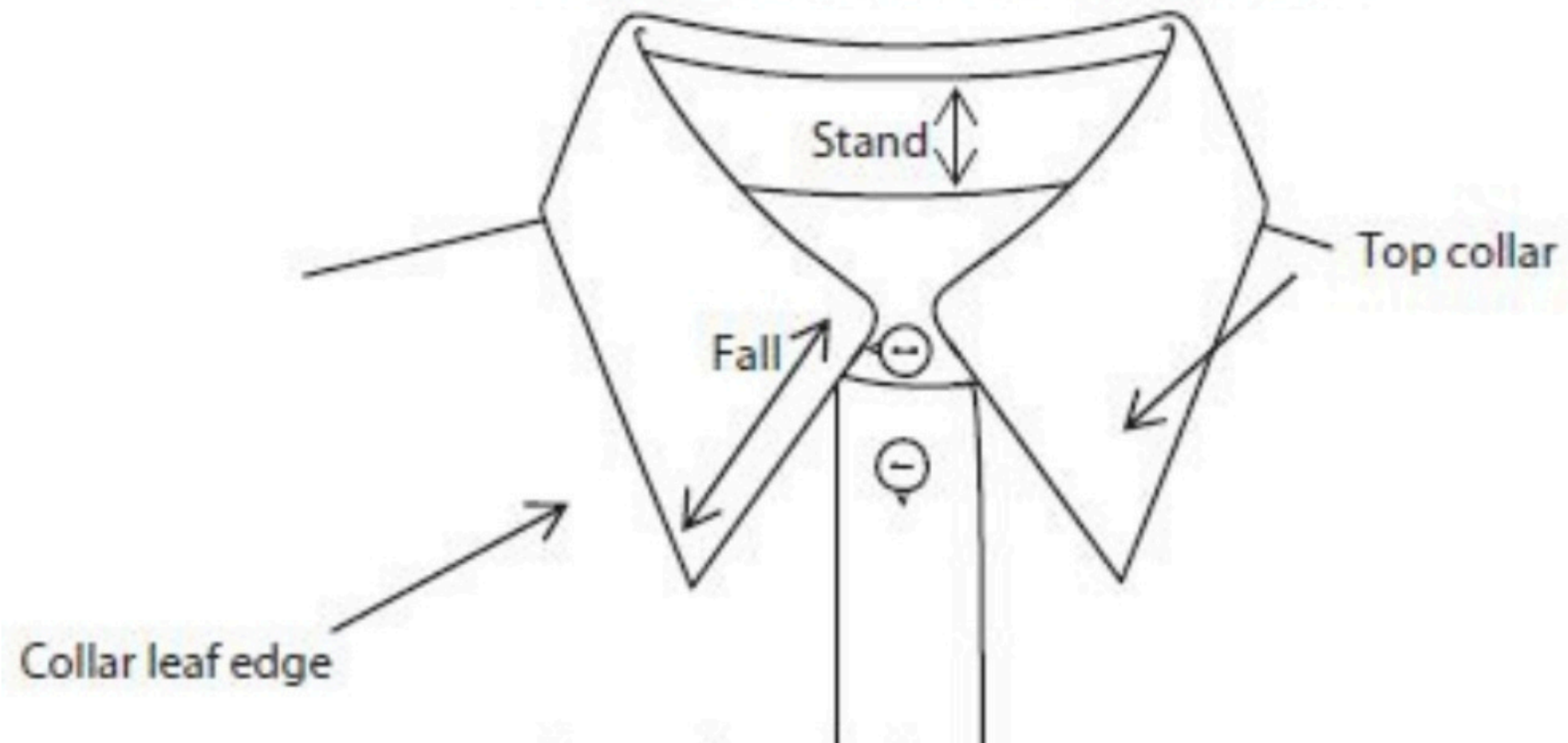


**INSTRUCTIONS!**  
 MAKE A TENTATIVE SELECTION OF SPREAD AND POINT LENGTH. ON THE RIGHT SIDE, LOCATE THE INTERSECTION OF THE TWO AND PLACE A DOT ON THAT POINT USING A RULER AND FELT TIP PEN, CONNECT THE DOT, FIRST TO POINT "A" AND THEN TO POINT "B". REPEAT THE PROCESS ON THE LEFT SIDE OF THE RENDERING.  
Copyright © 1997 Alexander S. Kaban. All Rights Reserved. Permission is granted for Ask Andy About Clothes and Style Forum members to make up to five copies for their personal use in designing shirts for themselves. Other reproduction strictly forbidden.



**INSTRUCTIONS!**  
 MAKE A TENTATIVE SELECTION OF SPREAD AND POINT LENGTH. ON THE RIGHT SIDE, LOCATE THE INTERSECTION OF THE TWO AND PLACE A DOT ON THAT POINT USING A RULER AND FELT TIP PEN, CONNECT THE DOT, FIRST TO POINT "A" AND THEN TO POINT "B". REPEAT THE PROCESS ON THE LEFT SIDE OF THE RENDERING.  
Copyright © 1997 Alexander S. Kaban. All Rights Reserved. Permission is granted for Ask Andy About Clothes and Style Forum members to make up to five copies for their personal use in designing shirts for themselves. Other reproduction strictly forbidden.

# Collar Parts

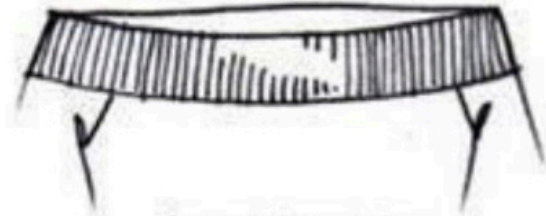




Redonda



Canoa



Canoa ombro a ombro



Pólo sem botões



Pólo com zíper



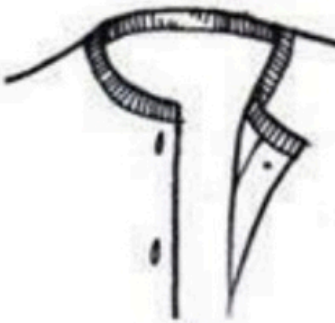
Pólo com botões



Gola alta cruzada



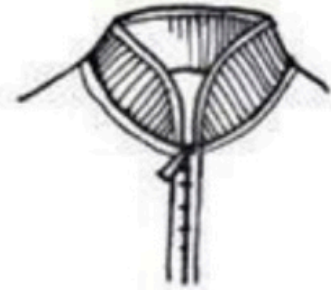
Gola alta com abotoamento em um lado



- Rebeca



Cardigan lisa



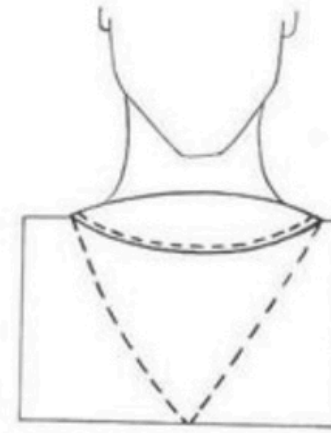
Mao para japona



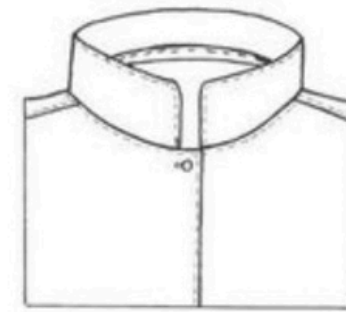
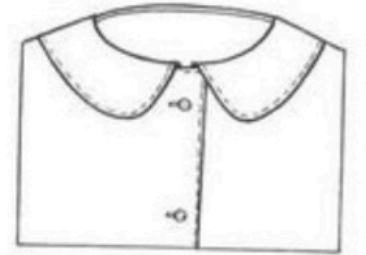
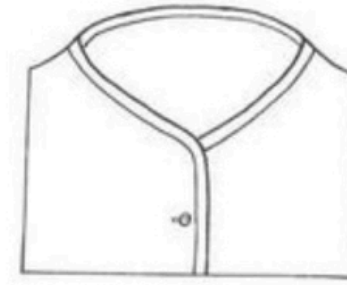
Xale ou smoking



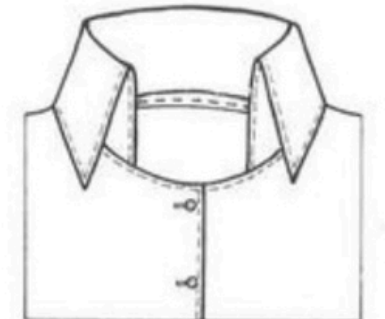
Em V



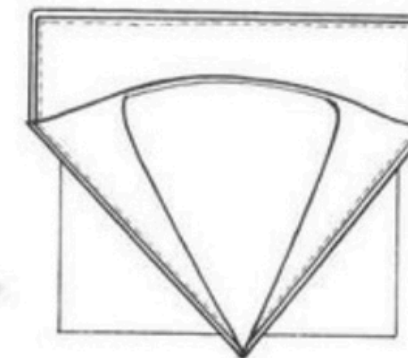
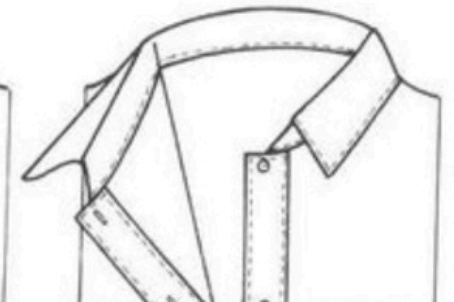
Left to right: Basic, neckhole, flat collar



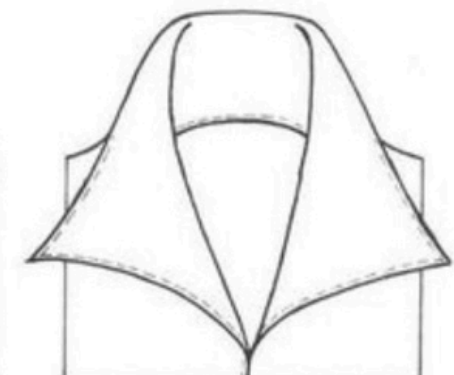
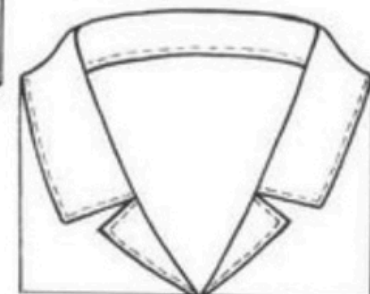
Left to right: Mandarin, classic, classic 1970s



Left to right: Button-down shirt collar, rounded shirt collar, open-necked collar



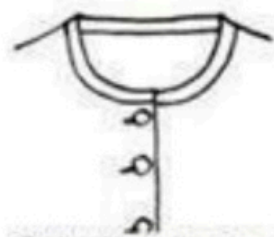
Left to right: Sailor, with small lapels, American-style with large lapels



Circular



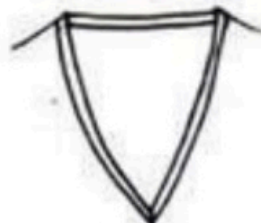
Redonda



Redonda com botões



Canoa



Em V



Suéter



Gola-capuz



Pólo sem botões



Pólo com botões



## TYPES OF COLLARS

TYPY KOŁNIERZY



STRAIGHT  
KENT



BUTTON DOWN  
BUTTOWN DOWN



ITALIAN  
WŁOSKI



WITH ROUND CORNER  
Z ZAOKRĄGLONYM  
ROGIEM



SPREAD  
HAI



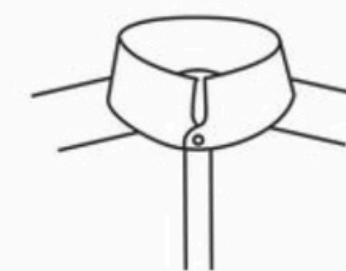
TAB  
TAB



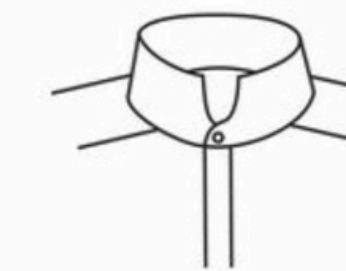
PINNED  
PICCADILLY



CLUB  
KLUBOWY



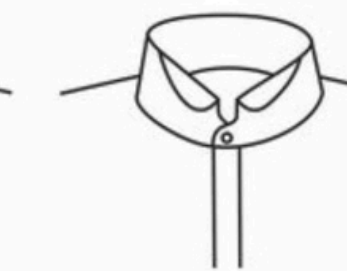
HRH  
HRH



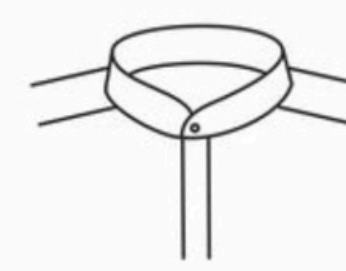
IMPERIAL  
CESARSKI



HIGH WING COLLAR  
WYSOKI ŁAMANY



ROUND WING COLLAR  
MOTYLKOWY



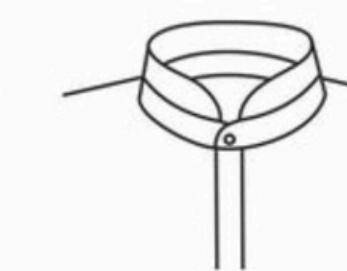
BAND  
STÓJKA



HIDDEN BUTTON  
INDOOR

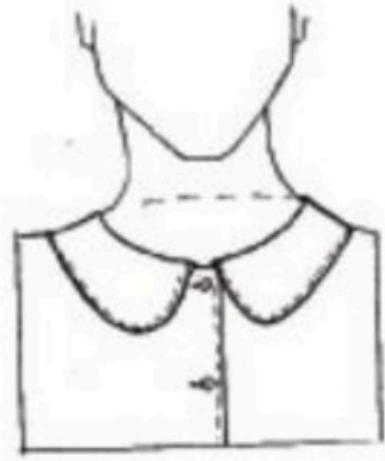


WING COLLAR  
ŁAMANY

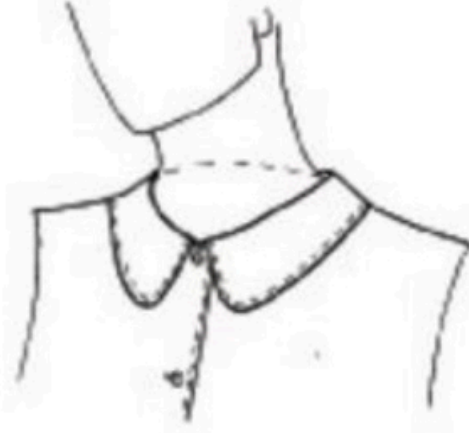


HIGH BAND  
WYSOKI NA STÓJCE

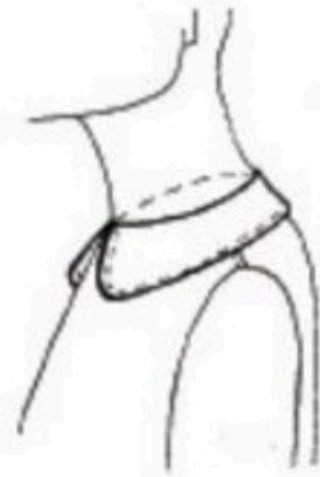
delante



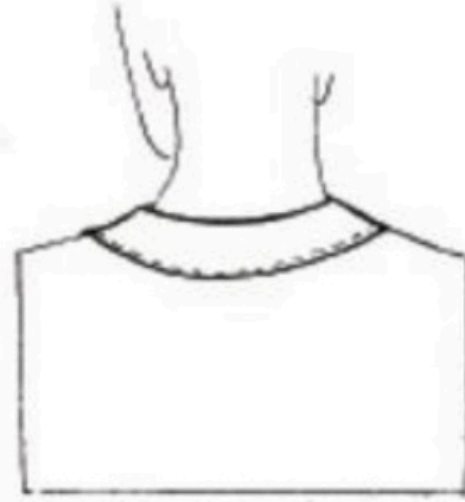
tres cuartos



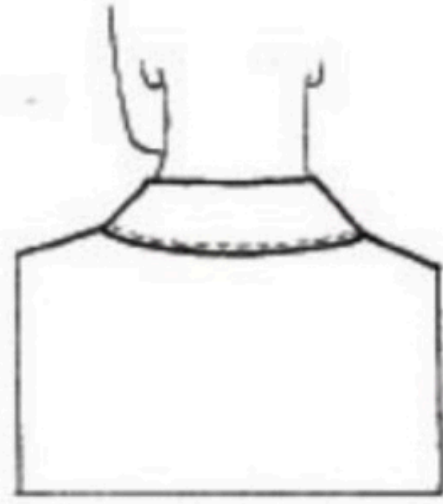
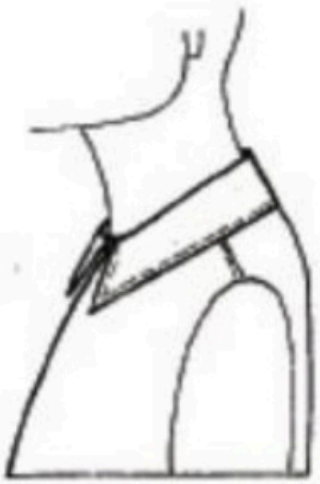
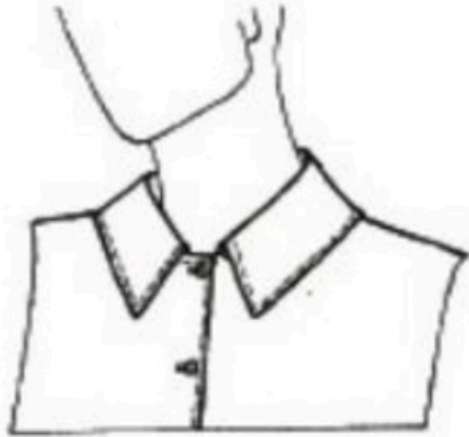
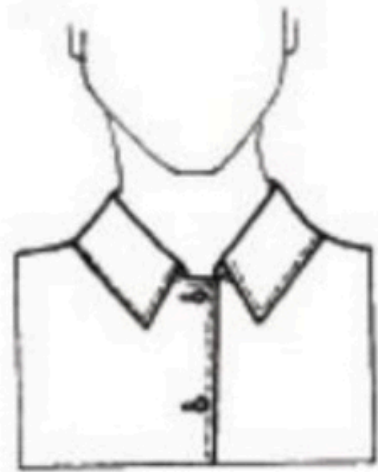
perfil



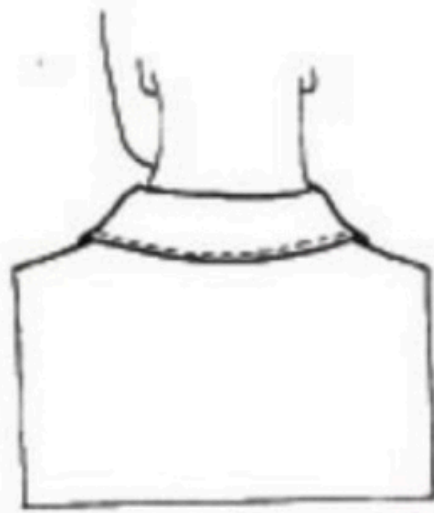
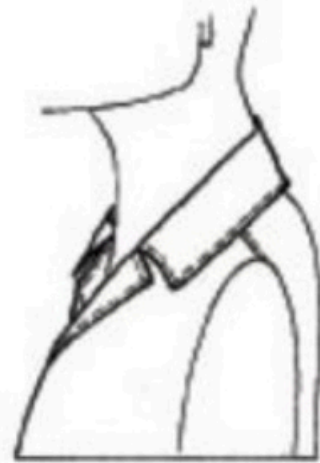
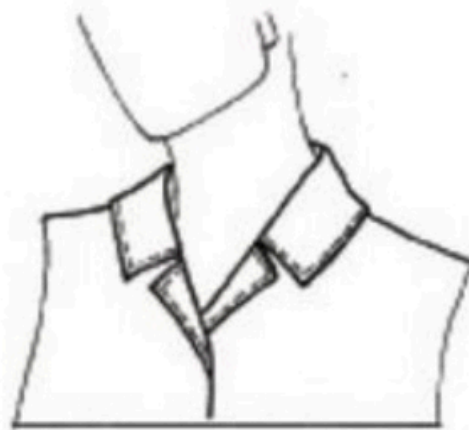
detrás



cuello plano

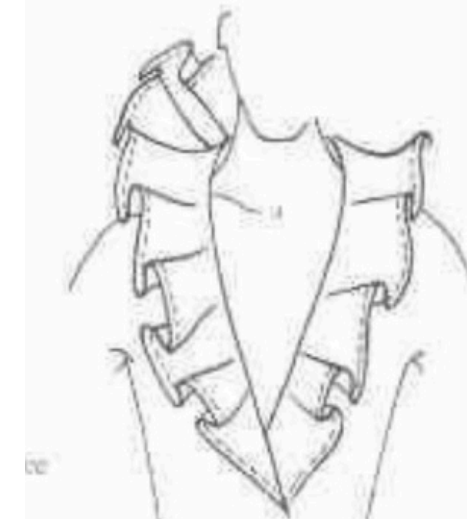
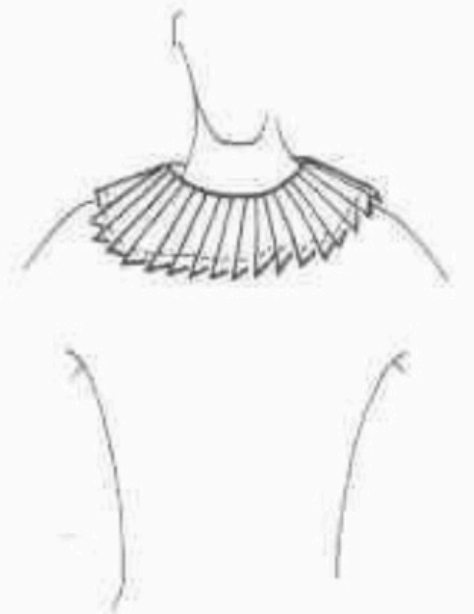
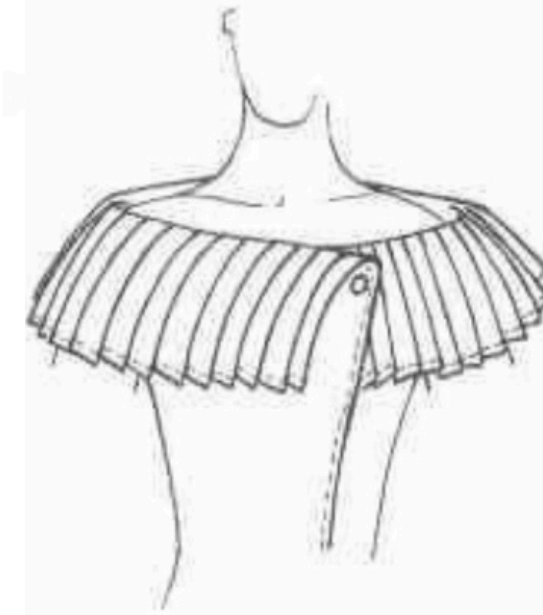
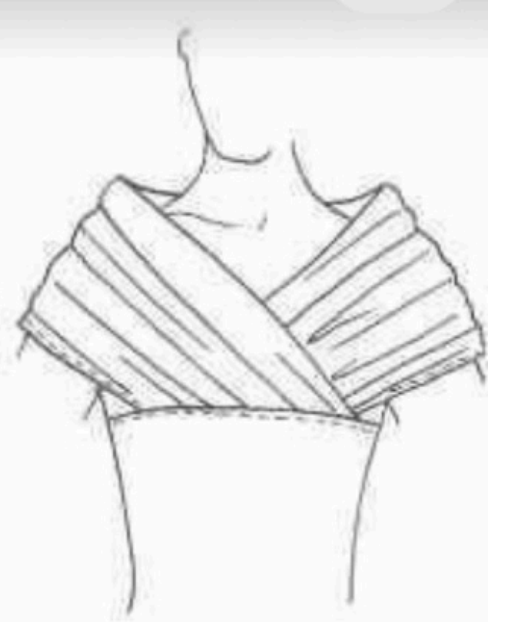


cuello despegado

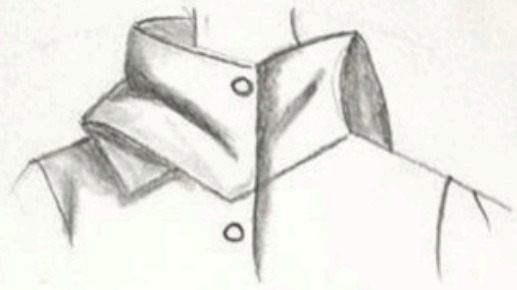


cuello solapa

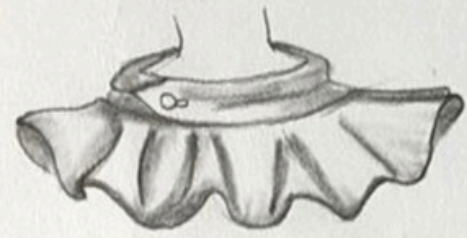
perfil



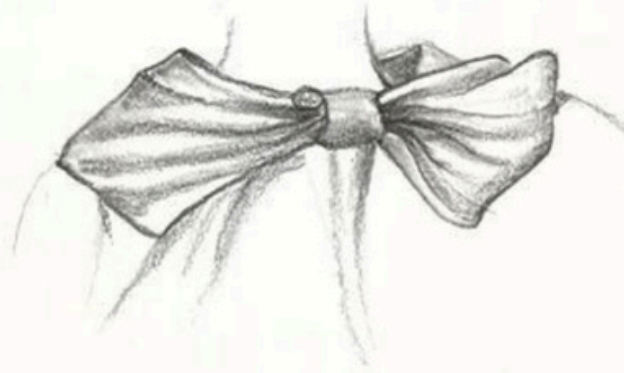
# COLLAR



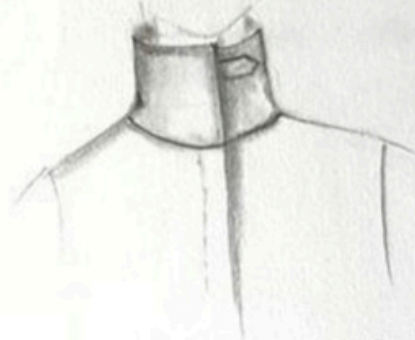
EXTEND POINTED



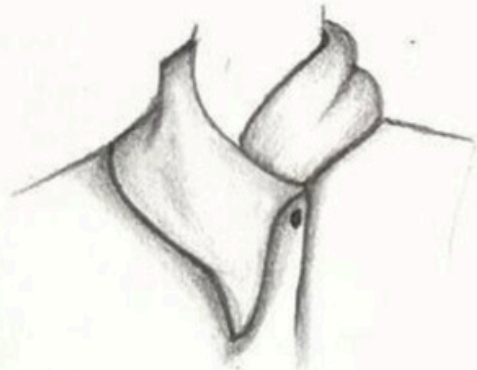
COLLARET COLLAR



BOW COLLAR



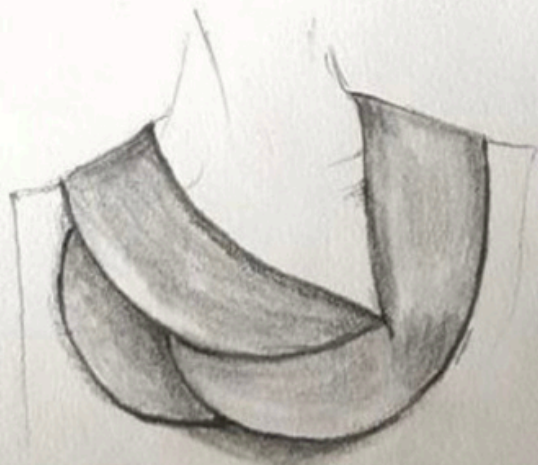
HIGH NECK COLLAR



SHAWL COLLAR



DRAPPED COLLAR

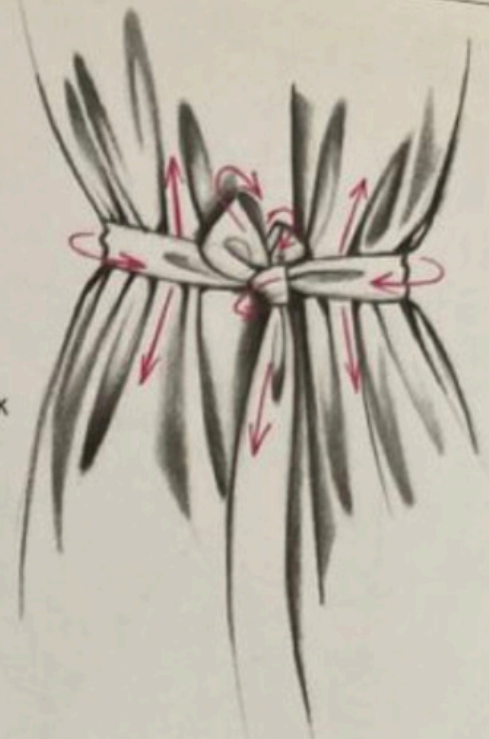


ROBERTO COLLAR

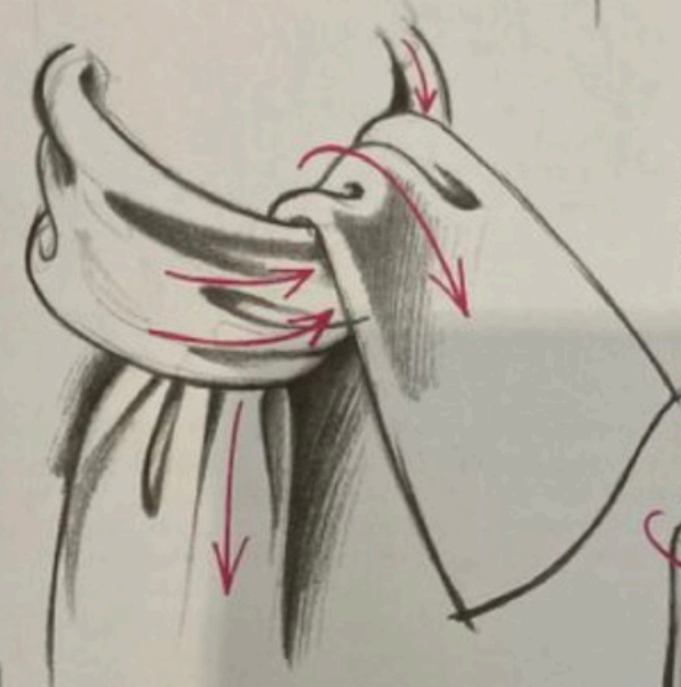
*Honey.*



Важно показать, что линии складок или деталей одежды огибают фигуру.



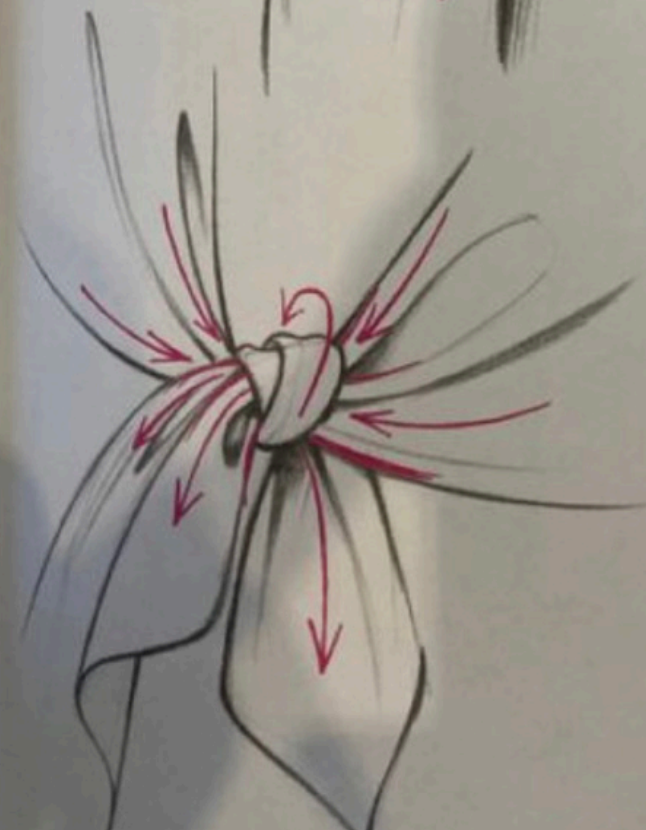
Выделяя тоном три плана изображения, можно показать сложный, многослойный объем складок и узлов.



Чтобы правильно изобразить узел, следует изучить способ его завязывания.



Вид банта сверху.



Вид банта снизу.

Свет и тень

• the ultimate *female collars* fashion vocabulary •



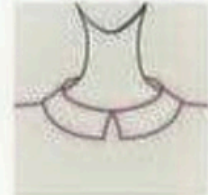
**chelsea**

Medium-wide collar with square pointed ends attached to a front opening V neckline.



**johnny**

Very small high stand collar attached to a V neckline. Usually a single-layer knitted collar.



**pointed flat**

Narrow collar with squared ends at center front. It is also known as «bermudes».



**peter pan**

Narrow collar with rounded ends at center front.



**puritan**

Rounded collar similar to «peter pan» but wider. It covers part of the shoulders.



**wing**

Stiff band collar with pointed ends that fold outward.



**shawl**

Collar formed by an extension of the facing and garment front (undercollar).



**notched**

Notched with square corners on lapel and collar.



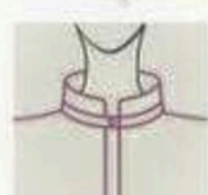
**convertible**

One-piece high stand collar which can be worn open or closed. Lapels are formed when worn open.



**shirt**

The traditional two-piece high stand collar (called band and collar). The ends of the collar may be square, round, or pointed.



**mandarin**

Band collar with square or rounded ends that do not quite meet at center front. It is also called «chin» or «shiro» collar.



**bib**

Flat rounded, square, or oval shape fitting around the neck like a child's bib.



**ruffle**

Straight piece of fabric, lace, or trim gathered to neck edge to form ripples.



**tie neck**

A narrow fabric band of varying length worn around the neck and tied in a knot or bow close to the throat.



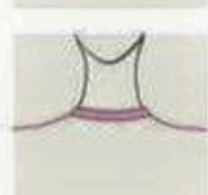
**jabot**

When one or two pieces of fine soft fabric is used to decorate the neckline, it makes the jabot collar.



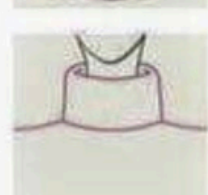
**cascade**

Circular-cut ruffle attached to neckline at center front of garment.



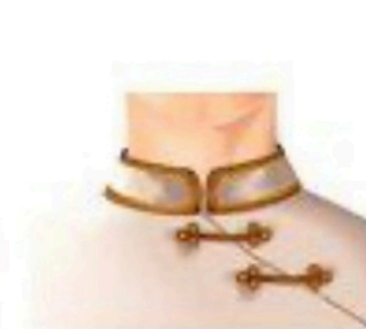
**crew**

High rounded neckline finished with narrow strip of rib knit.



**turtleneck**

High rounded neckline finished with very wide strip of rib knit that is often worn folded over.



1



2



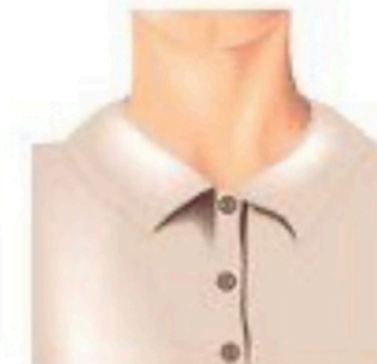
3



4



5



6



7



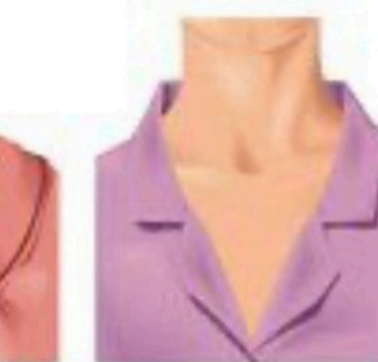
8



9



10



11



12



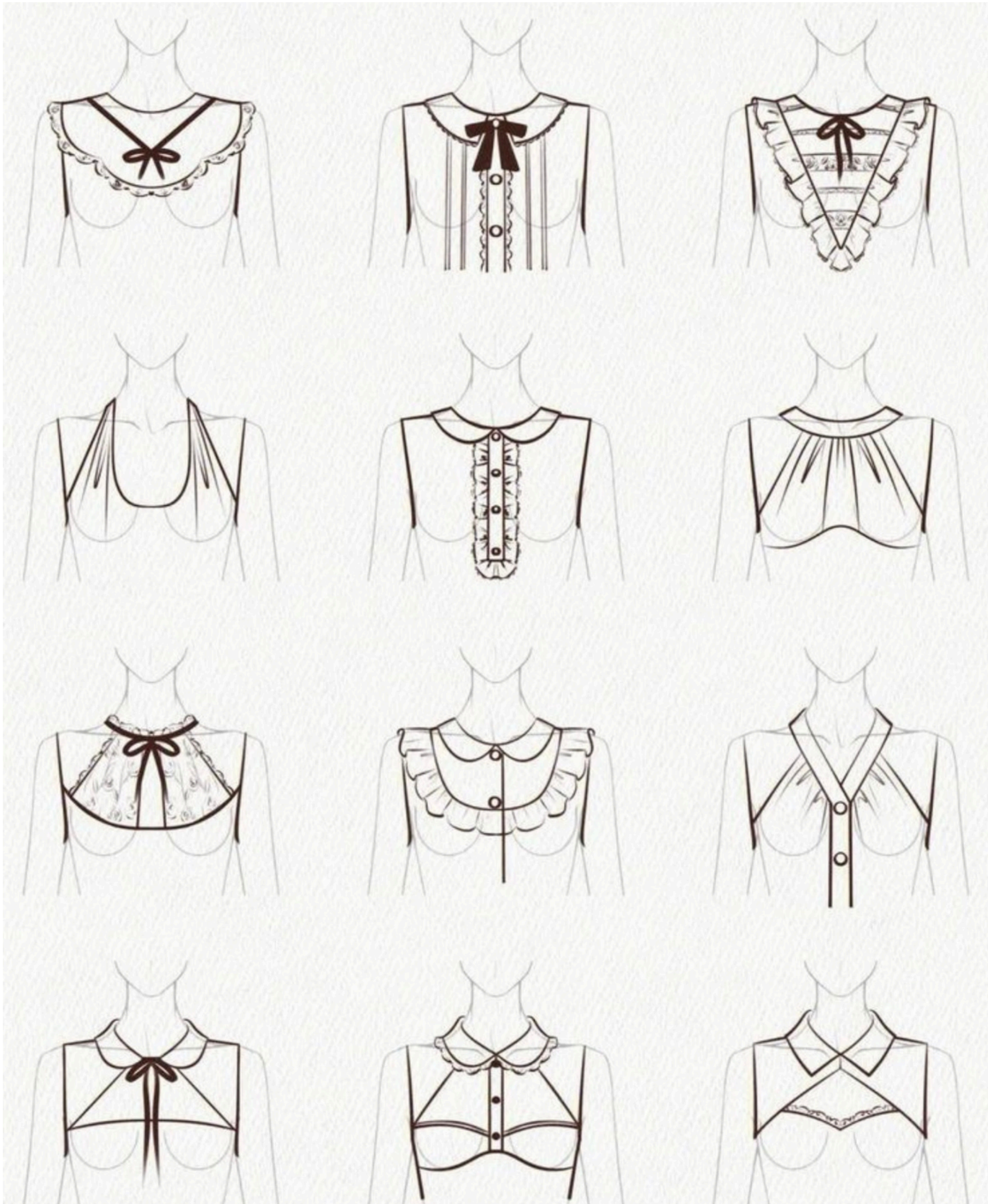
13



14

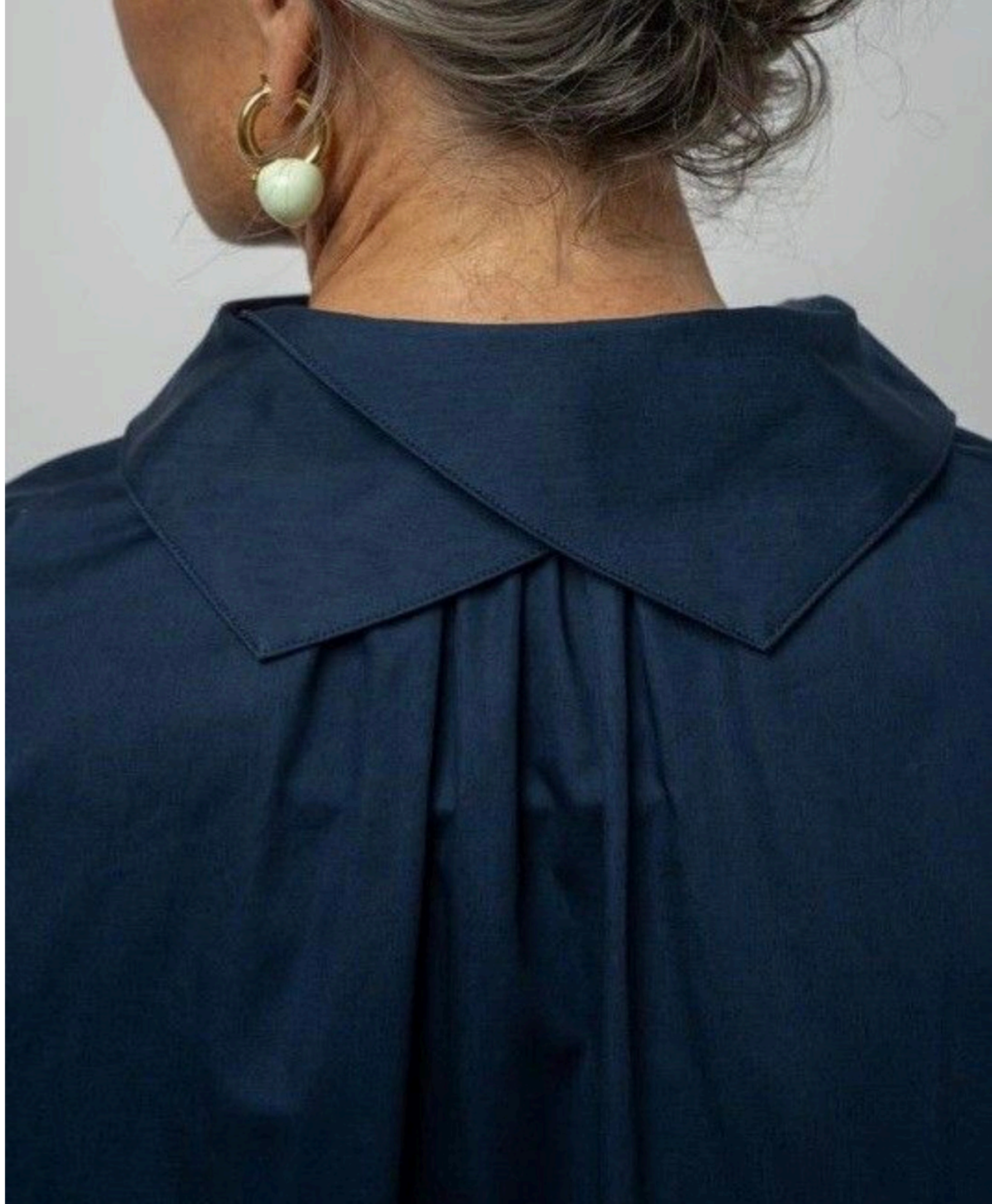


15

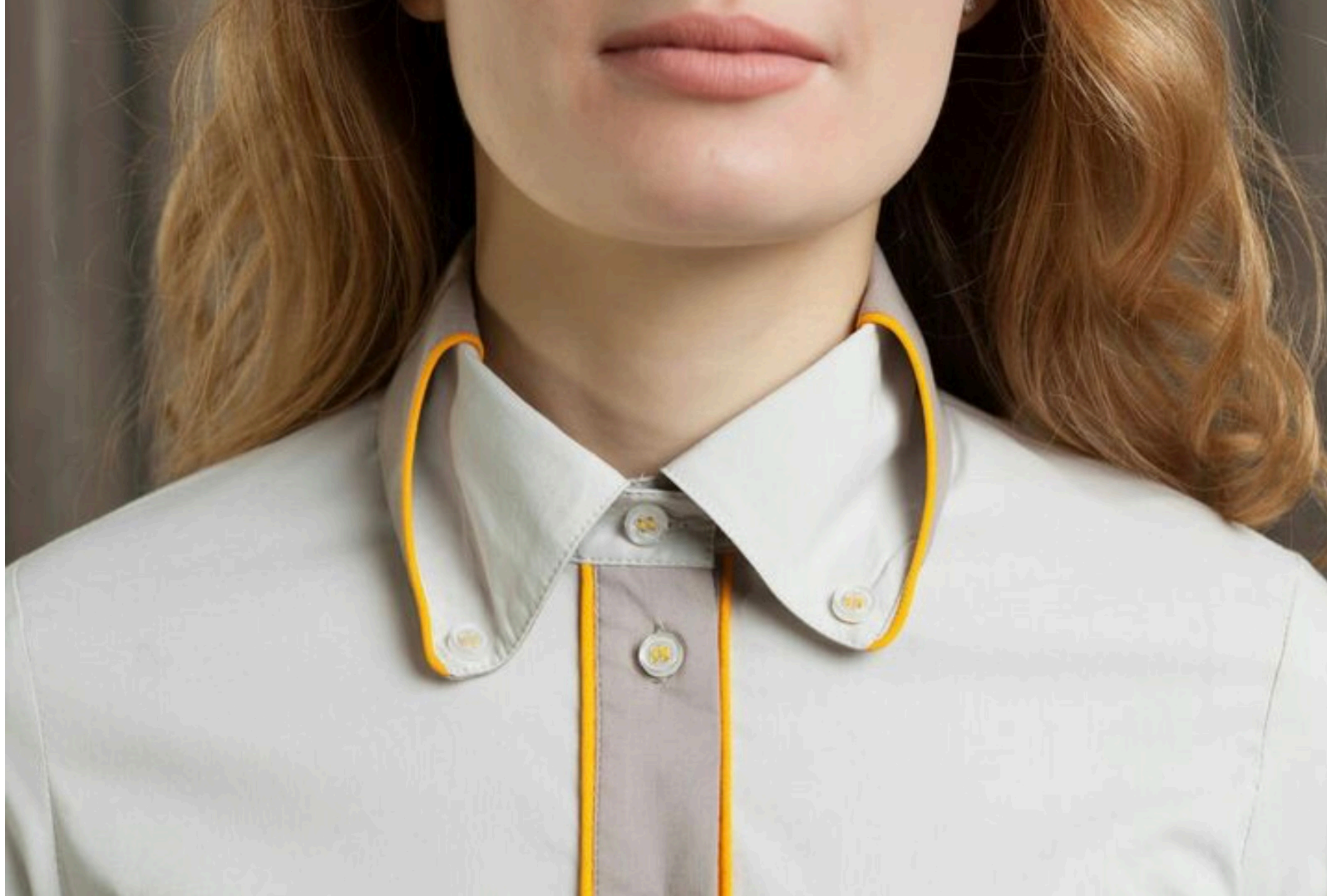










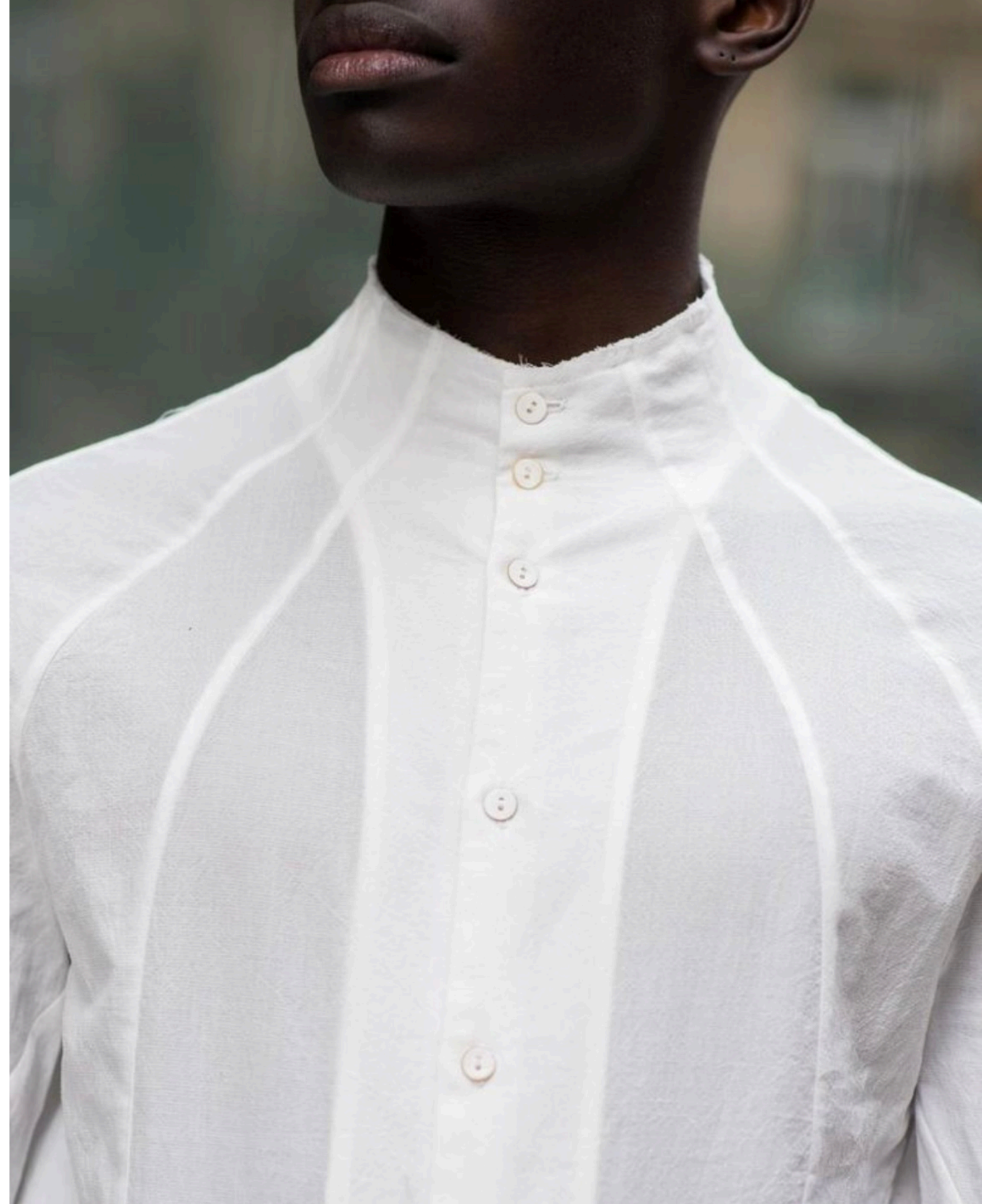


ALAIN FIGARET

















WELCOME GHOSTS INSIDE OF YOU AND LIKE THEM