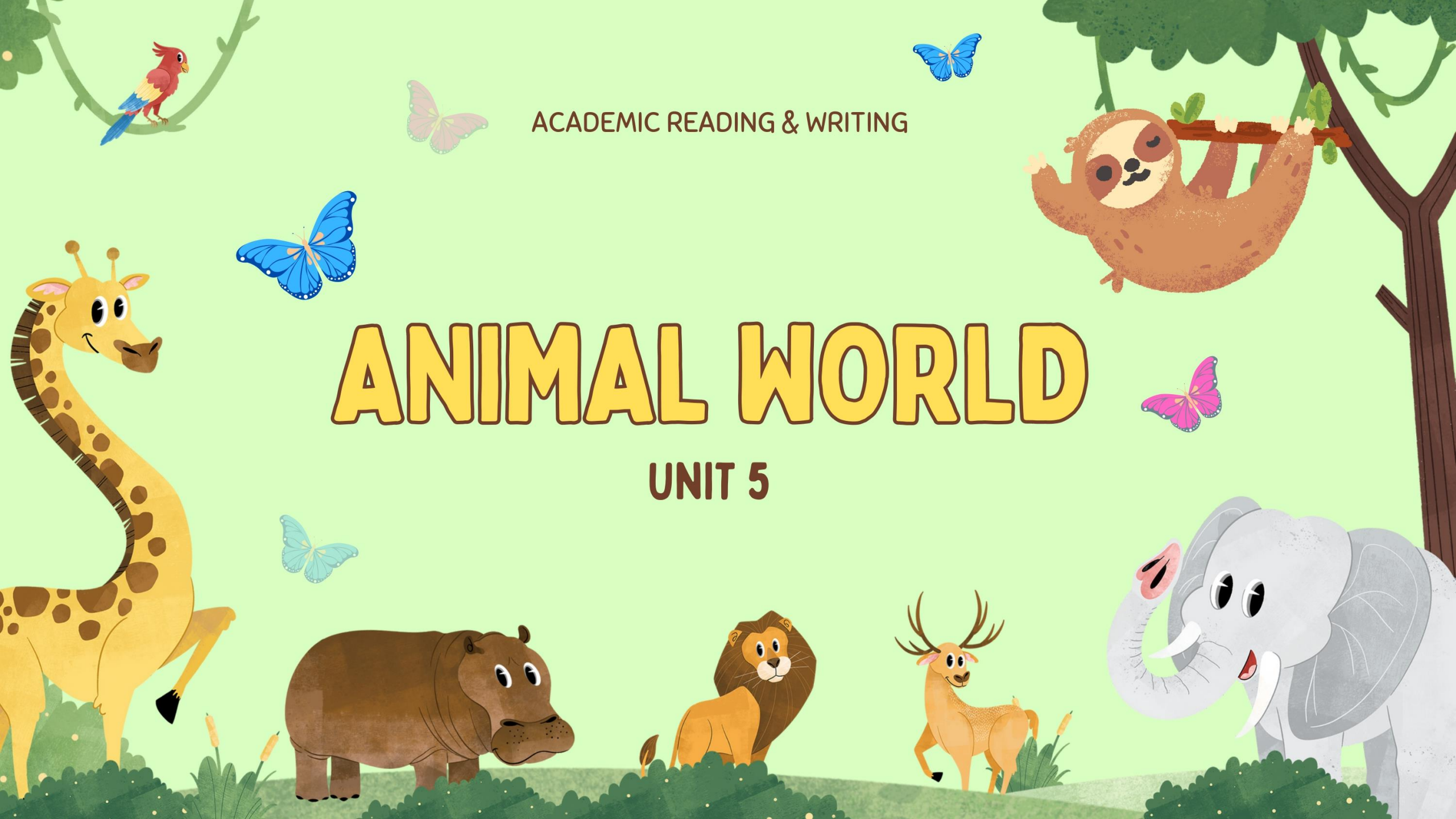


ACADEMIC READING & WRITING

# ANIMAL WORLD

UNIT 5





# LEARNING OUTCOMES

- Be able to effectively skim a text to identify the main idea.
- Be able to accurately identify true or false statements.
- Be able to write sentences in various structures.
- Be able to write clauses in their reduced forms for clarity and conciseness.

# VOCABULARY REVIEW

“Why We’re Hardwired to Love Baby Animals”

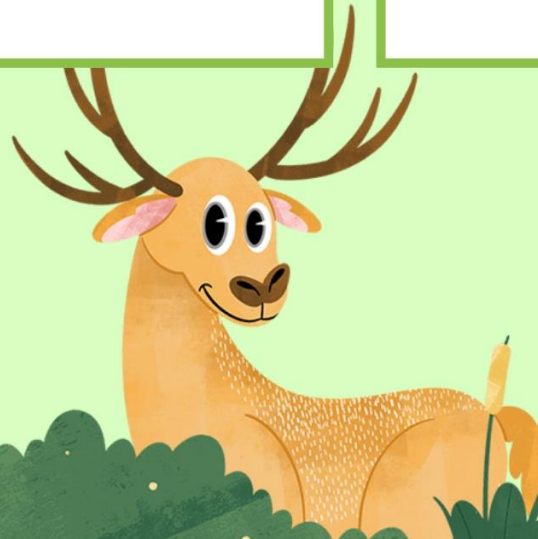
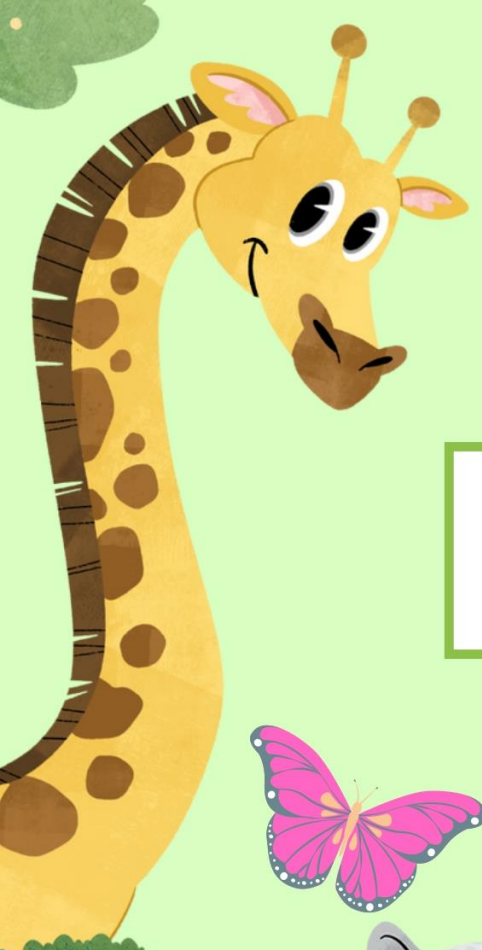
trigger

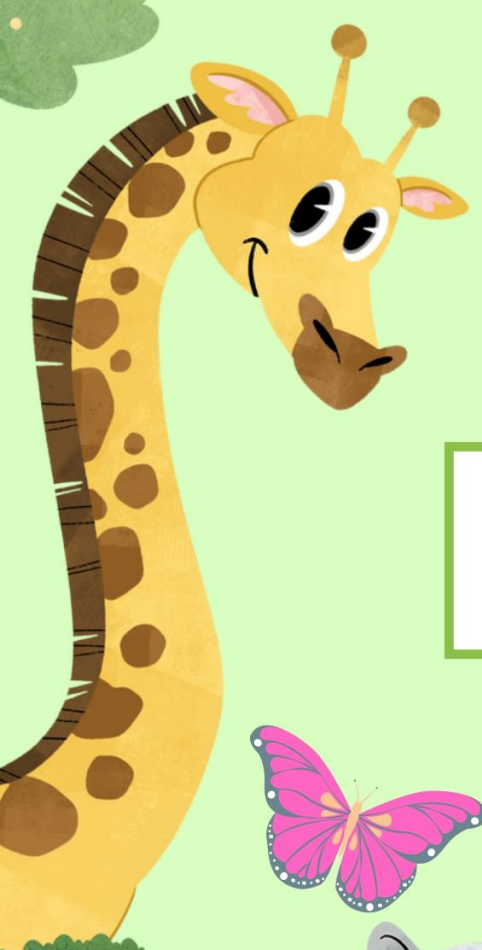
evolutionary

ethologist

prominent

wobbly





adaptation

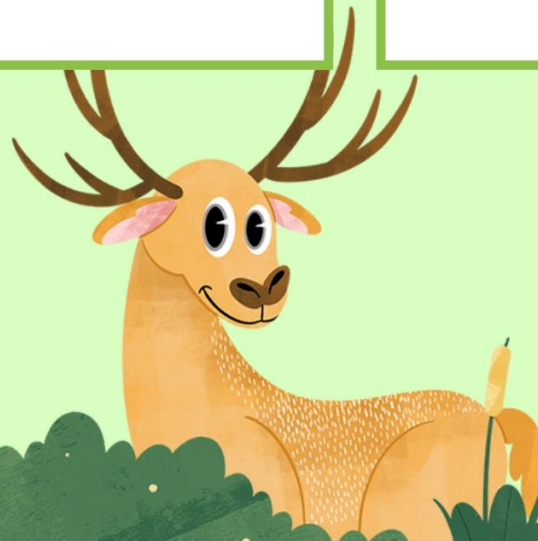
schema

traits



enhance

perception

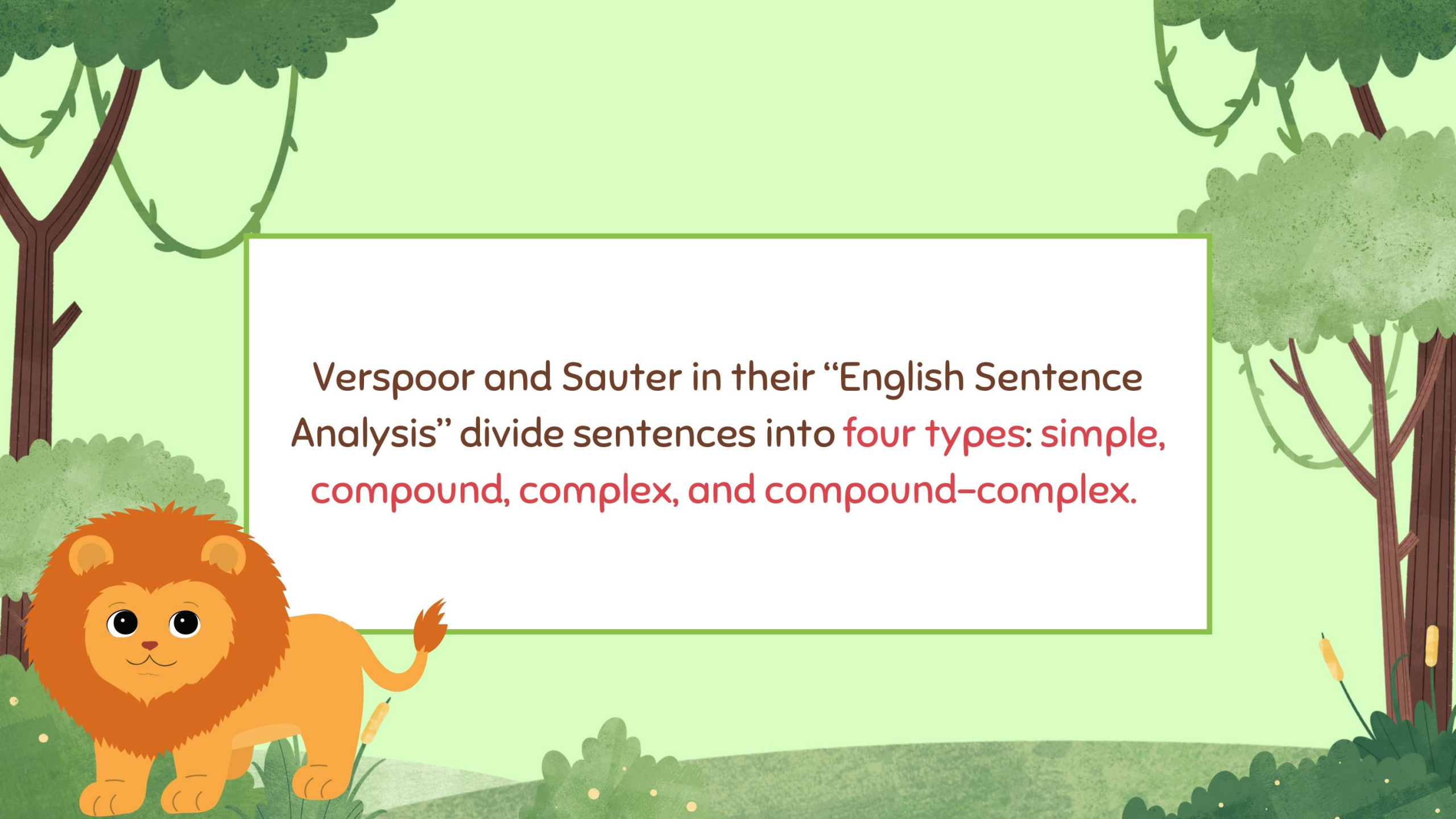


# GRAMMAR

## Sentence Analysis

Sentence analysis is the process of examining a sentence to identify its main components, which helps us understand how the sentence conveys meaning. This analysis typically focuses on **two key elements: the subject and the verb (predicate).**



A cartoon illustration of a savanna landscape. In the foreground, a friendly-looking orange lion with a large mane stands on a grassy patch. The background features rolling green hills, several trees with brown trunks and green foliage, and some small yellow flowers. The overall style is bright and colorful.

Verspoor and Sauter in their “English Sentence Analysis” divide sentences into **four types: simple, compound, complex, and compound-complex.**

# 1. SIMPLE SENTENCE

- A simple sentence contains just one main clause, which means it expresses a complete thought on its own.

The phenomenon goes beyond triggering caregiving instincts.



## 2. COMPOUND SENTENCE

Clause 1

The internet celebrates  
these adorable creatures,

but

Clause 2

why do we find them so  
captivating?





## Coordinating conjunctions

for      or  
and     yet  
nor     so  
but

## Correlative conjunctions

both...and  
not only...but also  
either...or  
neither...nor

### 3. COMPLEX SENTENCE

- A complex sentence consists of at least **one independent clause** and **one dependent clause**, which includes its own subject and predicate. A dependent clause begins with a subordinator— words such as because, although, if, which, who, where, when, and that.



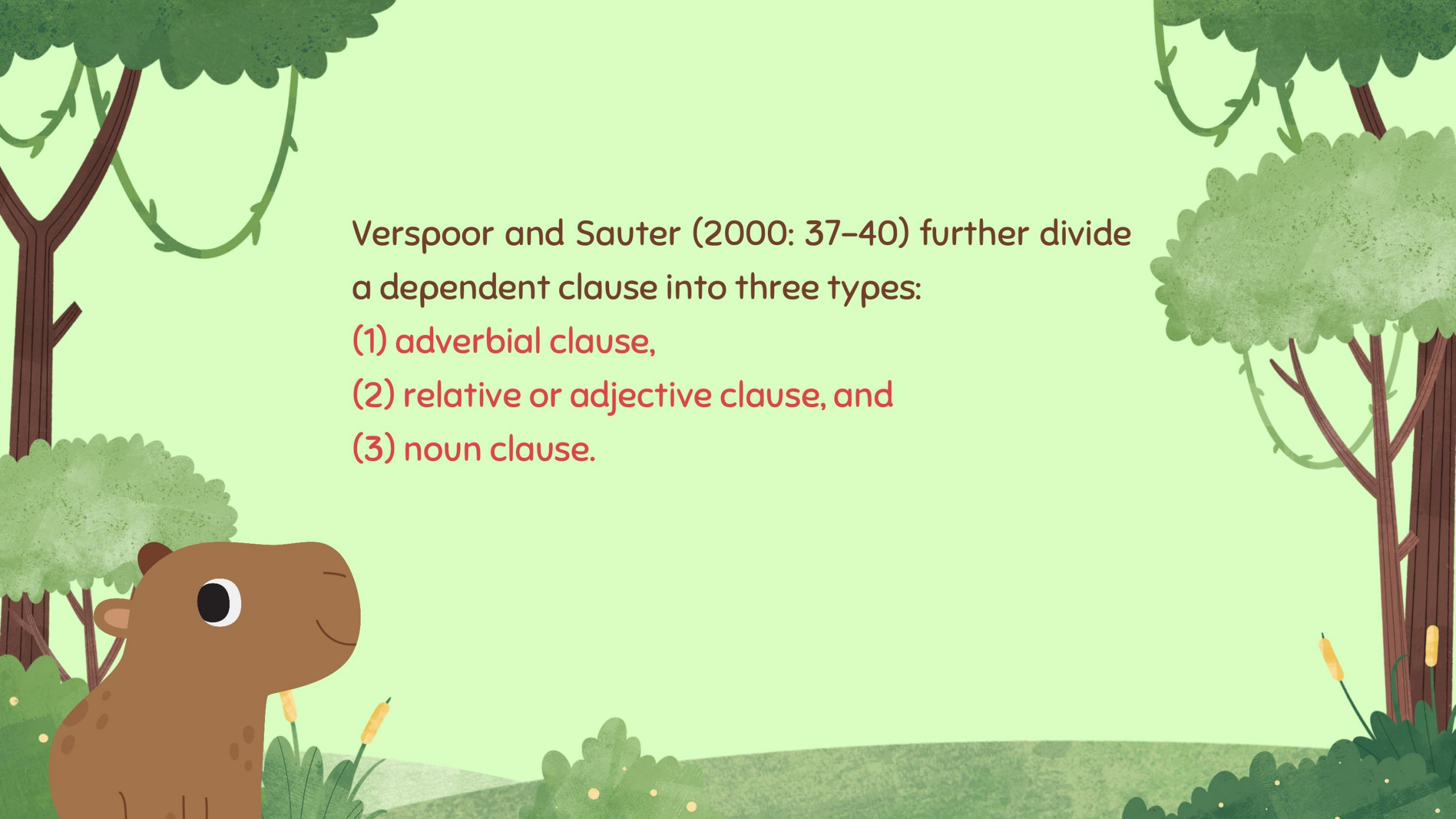
## Sentence

### Main Clause

Research shows

### Dependent Clause

that these baby schema traits appear in many animal species and enhance our perception of their cuteness.



Verspoor and Sauter (2000: 37–40) further divide a dependent clause into three types:

(1) adverbial clause,

(2) relative or adjective clause, and

(3) noun clause.



(1) adverbial clause

Main Clause

We seek out cuteness

Dependent clause functioning  
as an adverb

because it feels good!

## (2) relative or adjective clause

### Main Clause

Austrian ethologist  
Konrad Lorenz  
introduced the  
concept of  
kindchenschema

Dependent clause as a modifier  
of a noun

which identifies key features of  
cuteness...



(3) noun clause

Main Clause

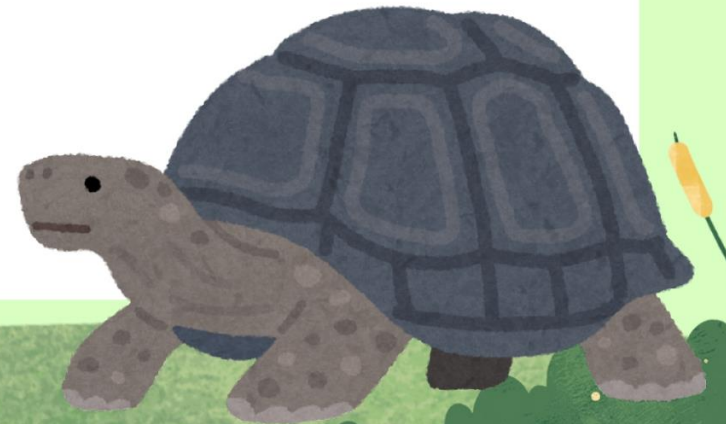
Research shows

Dependent clause functioning  
as an object

that these baby schema traits  
appear in many animal species  
and enhance our perception of  
their cuteness

## 4. COMPOUND-COMPLEX SENTENCE

- A compound-complex sentence features **two complete main clauses linked by the coordinating conjunction 'and,'** with one of the main clauses containing a dependent clause.



Main Clause

Dependent Clause

The perception of cuteness attracts our attention very quickly by triggering a response in the orbitofrontal cortex,

which is the pleasure and reward network of the brain,

and

Dependent Clause

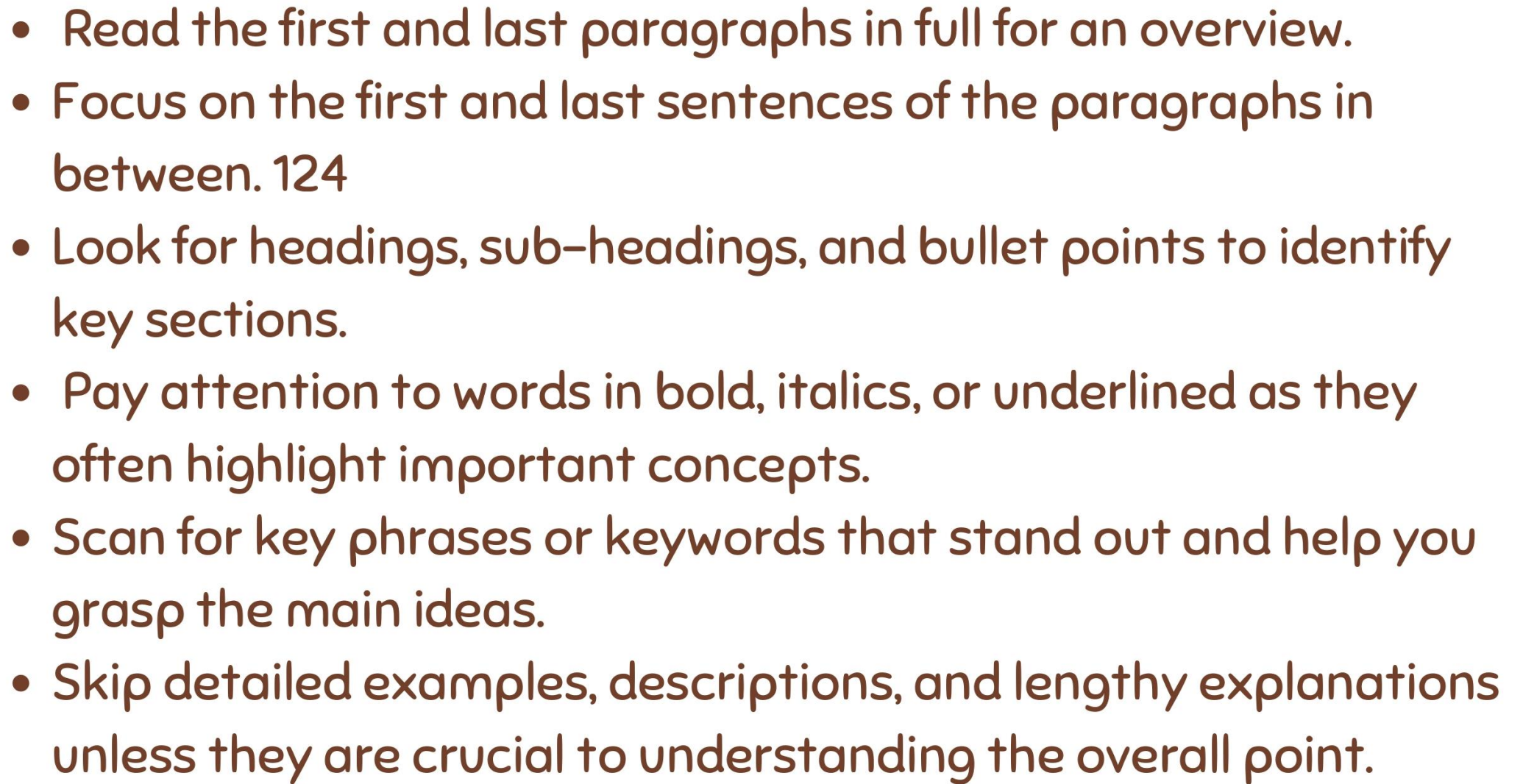
it also influences our emotions in a positive way.

# READING

## Skimming

Skimming is a reading technique where you quickly glance through a text to get the main idea of its content, rather than reading it word-for-word. The main idea is often presented in the form of sentences, typically found in the first and last sentences of paragraphs, unlike the title or topic, which only offers a broad overview of the subject. Here's how to skim a text effectively (BBC, 2024):



- 
- Read the first and last paragraphs in full for an overview.
  - Focus on the first and last sentences of the paragraphs in between. 124
  - Look for headings, sub-headings, and bullet points to identify key sections.
  - Pay attention to words in bold, italics, or underlined as they often highlight important concepts.
  - Scan for key phrases or keywords that stand out and help you grasp the main ideas.
  - Skip detailed examples, descriptions, and lengthy explanations unless they are crucial to understanding the overall point.

# WRITING

## Writing Compound and Complex Sentences

### 1. Compound Sentence

#### Compound sentence

Independent clause	+	Coordinating conjunction (FANBOYS)	+	Independent clause
The dog barked	+	and	+	the cat ran away.
The dog barked, and cat ran away.				

## 2. Complex Sentence

### Complex sentence

Independent clause

+

Dependent clause  
(initiated by a subordinating conjunction e.g., because, although, since, if, when, or while)

The dog barked

+

because it saw a cat.

The dog barked because it saw a cat.



# VOCABULARY REVIEW

## “Monogamy in the Animal Kingdom”

cohabitation

contribute

cooperative

density

exclusivity



exemplify

exhibit

facultative



habitat

hallmark



# GRAMMAR

## Reduced Clauses

A reduced clause is a shorter version of a dependent clause that removes the subject and a form of the verb, resulting in a more concise sentence.

It retains key information and functions similarly to the original clause. Reduced clauses typically use present or past participles to convey the same meaning more succinctly.



## Reduced Relative Clauses

### Active Voice

A reduced relative clause typically uses the present participle. There are three steps to reduce active relative clauses as follows:

- 1) Remove the relative pronoun (who, which, that, etc.).
- 2) Remove the auxiliary verb “be”, if any.
- 3) Change the verb into the “-ing” form (present participle).

These native rodents live in family groups ~~that~~ consisting of a male, a female, and their offspring.

### Passive Voice

In the passive voice, a reduced relative clause often employs the past participle. There are three steps to reduce active relative clauses as follows:

- 1) Remove the relative pronoun (who, which, that, etc.).
- 2) Remove the auxiliary verb “be”.
- 3) Keep the past participle verb.

...the strong pair bonds ~~that are~~ formed by Eurasian beavers contribute to their cooperative parenting...

## Reduced Adverbial Clauses

A reduced adverbial clause simplifies a longer clause by omitting the subordinating conjunction and sometimes the subject, often using participles instead. This makes sentences more concise while maintaining their meaning.

Because infants are primarily carried by their fathers, infants receive great care.

Primarily carried by their fathers, infants receive great care.

# READING

## True/False Reading Comprehension

Here are the tips for tackling true/false reading comprehension (Liz, 2024):

1. Take time to carefully analyze the statement in the question before searching for the answer.
2. Be aware that many words may be paraphrased.



# READING

3. Avoid focusing solely on keywords, as your goal is to match the meaning. Even if certain keywords appear in the passage, it does not necessarily mean the answer is true or yes.



# READING

4. "False" or "no" indicates that the statement contradicts the information or claims in the passage. This means the statement conveys one meaning, but the passage offers a different interpretation, making the statement false.



# READING

5. "Not Given" means that the complete meaning of the statement is not present in the passage. While some keywords may appear, the full meaning of the statement is absent.



# READING

6. The answers are presented in the same order as the information in the passage for these types of questions. Other reading comprehension questions may not follow the same order.



# Q&A

