



# ABI2205 Airline Logistics Management

Let's practice for  
the conversation

# U2-U3 Airline Logistics Management

## Cargo operations

01

- Ground handling / Shippers / Freight forwarders
- Airline equipment

## Cargo Terminal Operator

02

- Thai Airways International (TG Cargo)
- Bangkok Flight Services (BFS Cargo)

## Cargo Process: Shippers / Freight Forwarders

03

- Procedure

## Cargo Process: Cargo Terminal Operator / Airline

04

- Physical inspection
- Document inspection

## Cargo Process: Freight forwarder

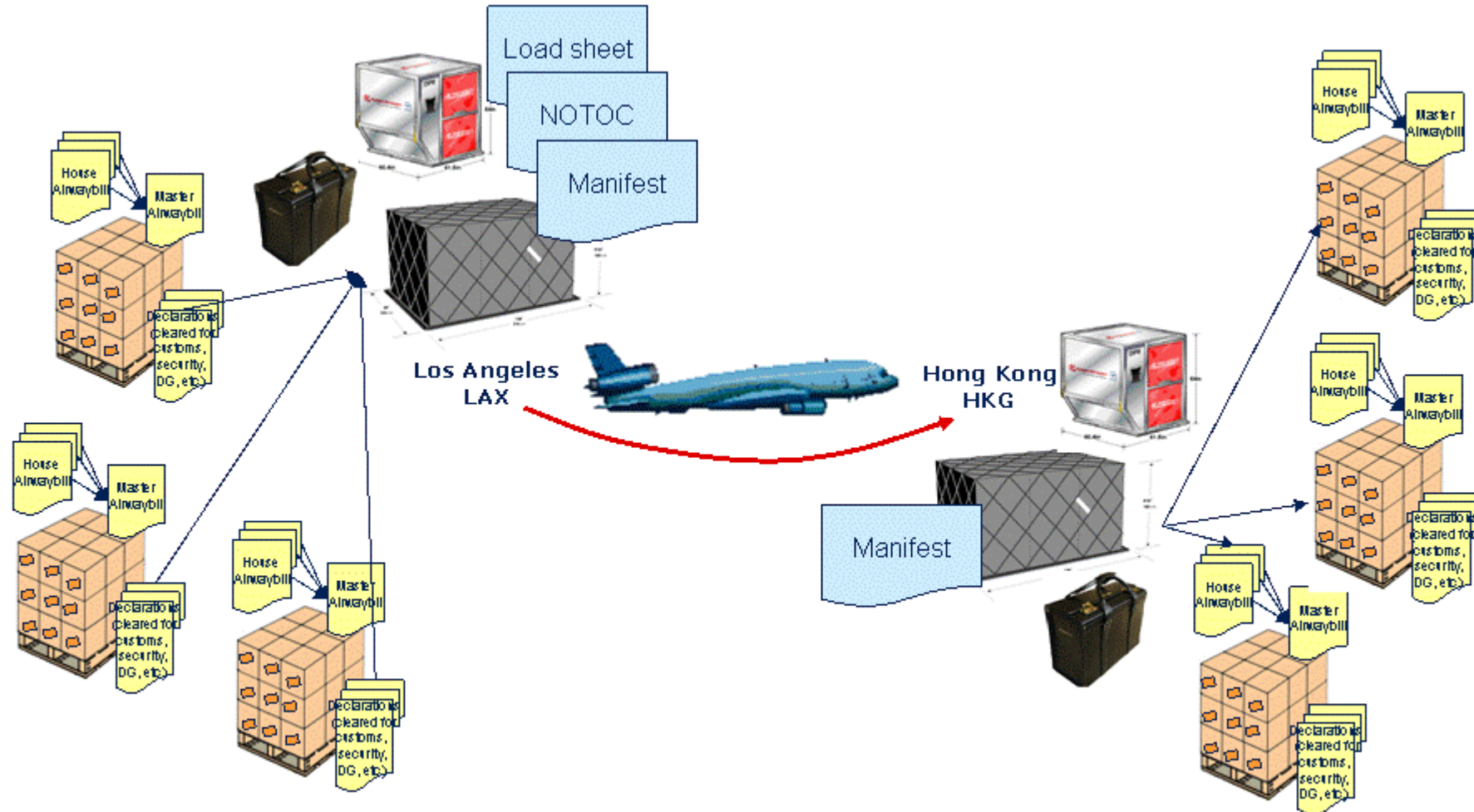
05

- Receive and Delivery



# Cargo Procedure

Source: Airline Logistics



# Cargo Procedure

Source: <https://www.semanticscholar.org/paper/Analyzing-the-Effects-of-e-Freight-within-the-Air-%3A-Franz-Danciu/>



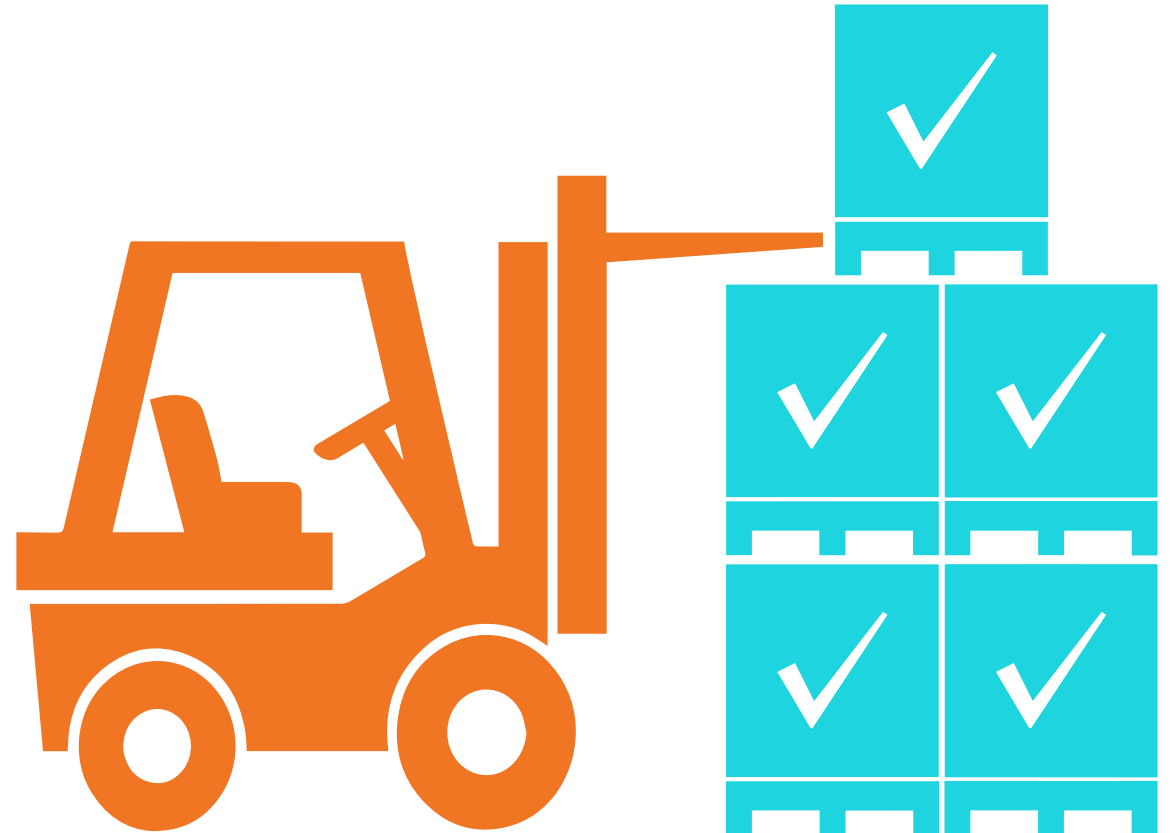
# Shippers / Freight Forwarders

## Shippers

Shippers are the manufacturers or primary producers of goods. They sell their goods to a consignee, which is generally the buyer of the goods

## Freight Forwarders

Freight forwarders are experts in the movement of cargo from the shipper to consignee. They are responsible for ensuring that goods move from origin to destination at the right place, right time, in good condition and at the most economical price



# Ground Handling

Ground handling involves accepting cargo into the warehouse from the shipper, may include trucking cargo from the shipper or another airport

The handler must prepare cargo for shipment by building it into pallets or loading into containers (ULDs)

All the necessary documentation and customs clearances must be obtained before handing it over to the ramp handler (Outbound)

Inbound cargo is treated in the reverse, by braking down the pallets and containers and preparing the cargo for the consignee

# Cargo Ground Handling in Thailand

Source: Thai Airways Cargo Facebook / Airfreight Logistics

## Thai Airways Cargo Terminal (TG-Cargo)



## Bangkok Flight Services Terminal (BFS-Cargo)



# Section Break

Let's take 10 mins break

# Unit Load Devices

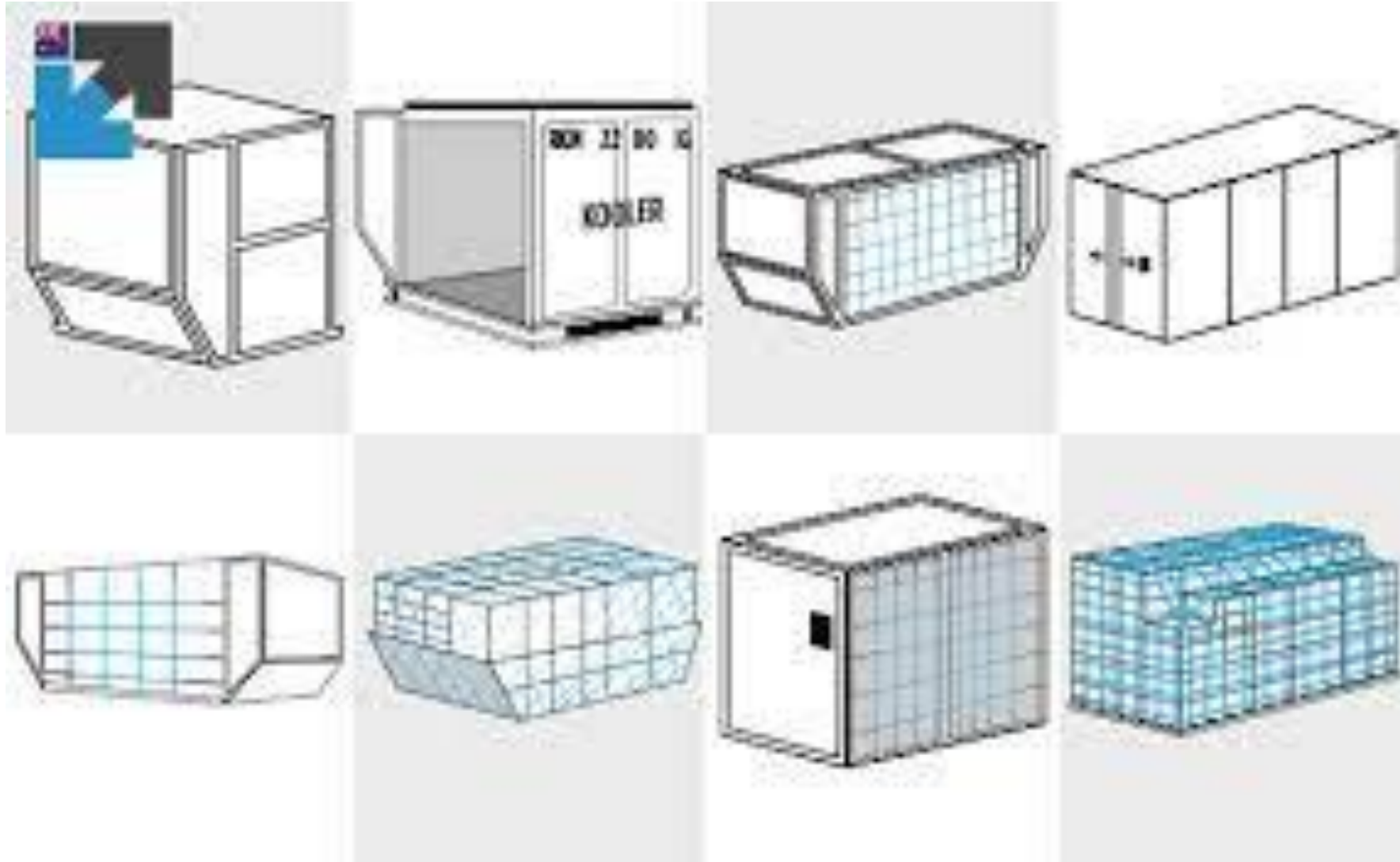
The small silver container or pallet used to package freight and mail for carriage on all types of aircraft, including freighters

Maximize the use of their capacity and to save time when loading and unloading aircraft

The containers are made of aluminium and various composite materials in order to be as light as possible

# Type of Container

Source: Freight forwarder quote online australia



# Container with wrap

AKE / AMD / AMA / AAF / AMA / AKW / AAP

Source: Made-in-China.com



# Type of Palette

PLA (tare wt 100) - B777/B787/A380 / PAG / PAJ / PMC (tare wt 110) –  
B777/B787/A380 / PRA / PGA Palette Weight

Source: Airline Logistics News / anacargo.jp



# Net and Corner rope

Source: Innovation in textiles





# Section Break

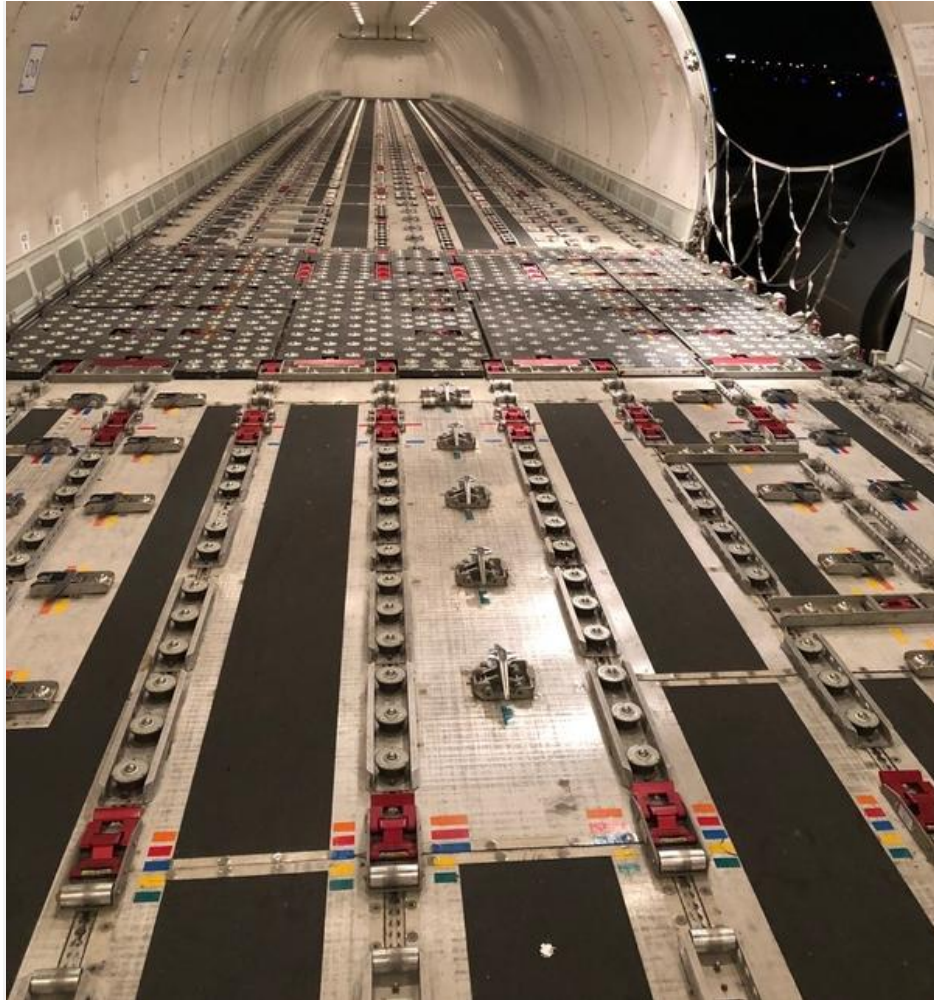
Let's take 10 mins break



# Cargo Major Equipment (ULD)

- Containers
- Pallets (Pax a/c – 160cms / Freight a/c – 300cms)
- Plastic wrap, Net, Corner protection, Corner rope

Source: Profit by Pakistan Today



# Wide Body Aircraft

There will be lock on the aircraft floor

Source: Wide body cargo hold



## Specialty ULD (Narrow Body Aircraft)

Most narrow-body  
aircraft are generally  
**ONLY** bulk hold  
(loose cargo)

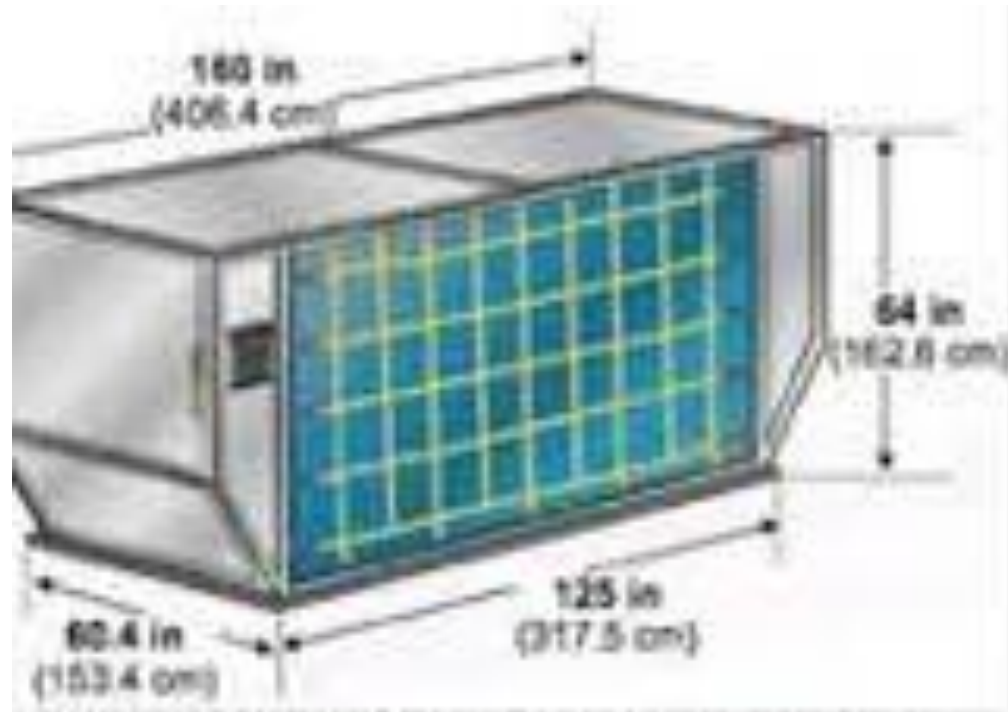
Source: Aviation Stack Exchange

# Airline Equipment

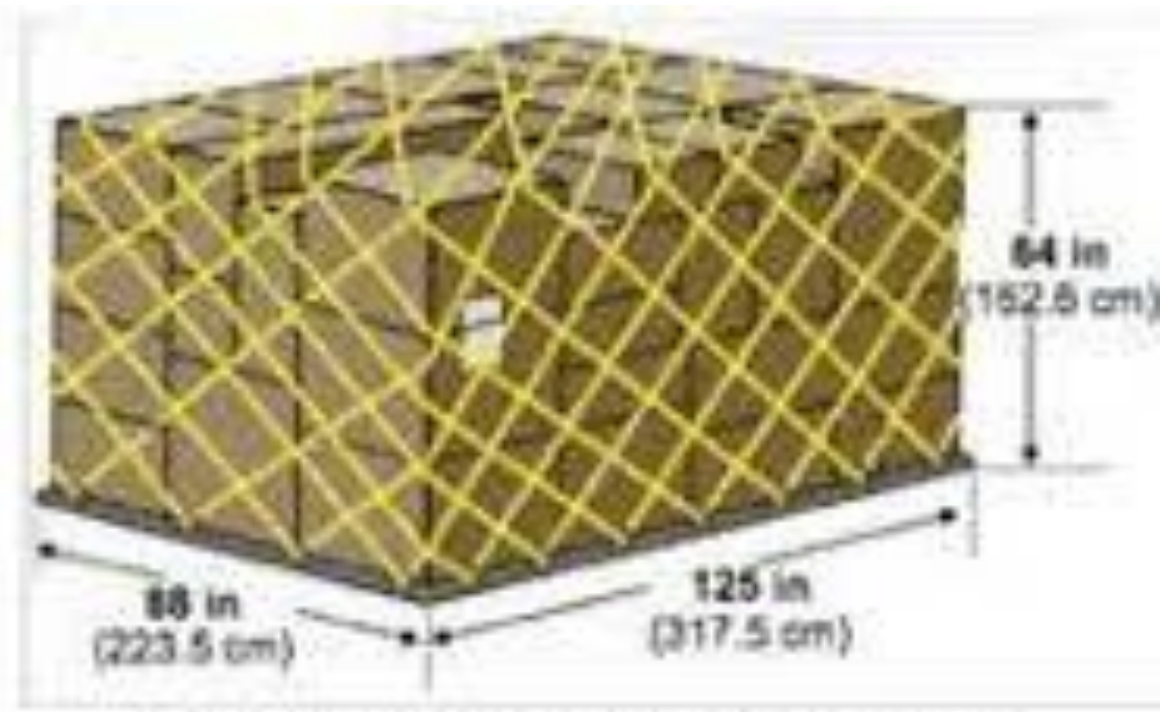
Unit Load Device (ULD) and associated Equipment such as tie-down straps

ULD can refer to both a flat pallet and a container

Source: Researchgate



**LD-6, ALF contoured container (IATA ULD Code)**



**LD-7, P1P flat pallet with net (IATA ULD Code)**



**FIGURE 133: TEMPERATURE CONTROLLED CONTAINERS (TCC) REQUIRE SPECIAL SKILLS TO OPERATE EFFECTIVELY.**

# Specialty ULD

ULD provide heating and cooling (useful for perishable or pharmaceutical shipments)

Source: ULD care



# Cargo on Pax's seat

There will be lock on the aircraft floor

Source: SF Gate

# Specialty Cargo

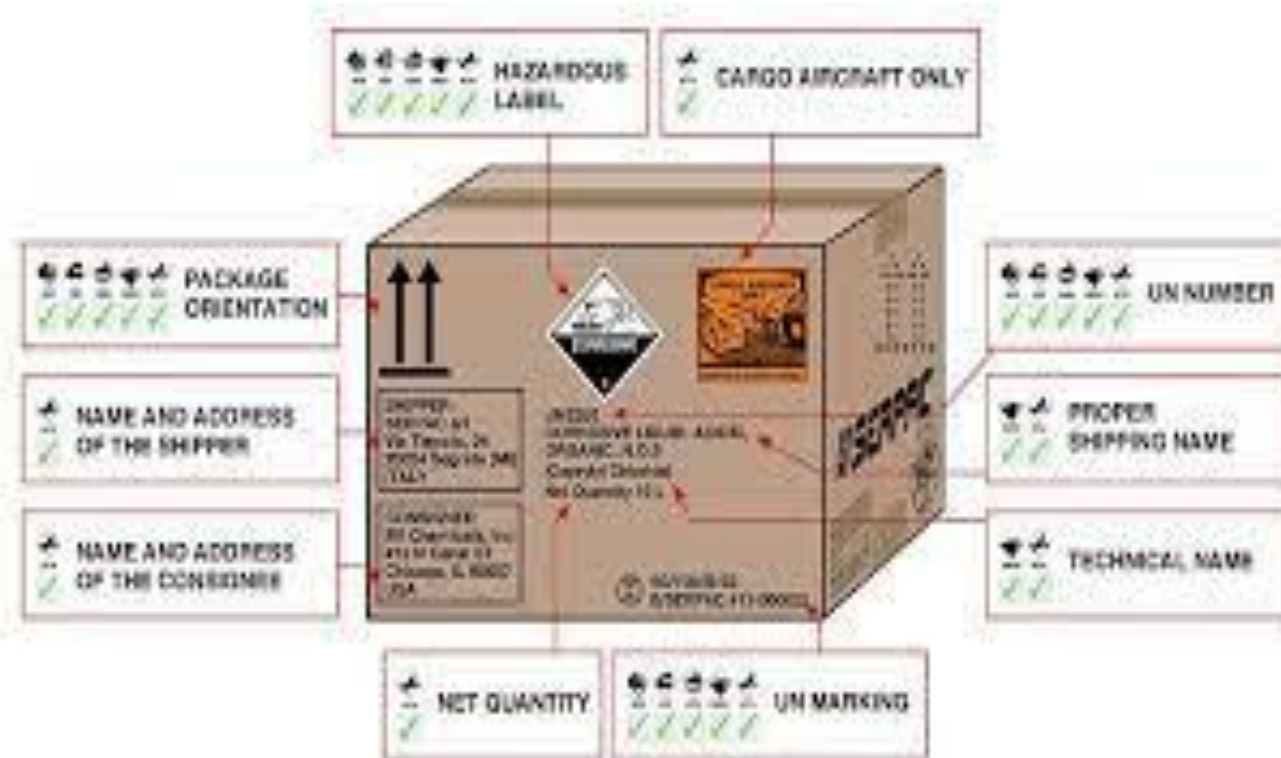


DGs need standards for documentation, handling and training (ICAO)

Dry ice / Flammable liquid / Blood samples / Gas / Etc.

Source: wCargo (Eng) / STAT Times

# Specialty Cargo



Dangerous Goods box labels

Source: serpac

# Specialty Cargo



## Dangerous Goods Marking

Source:  
federalaviationadministration

# Cool Logistics



Perishable is broadly applied to products which will spoil without temperature control, proper care and handling.  
Foods-Flowers-Medicines ; 2-8c, 15-25c, -10-20c

Source: Airline Logistics WEEK / IATA



# Live Animals

In dealing with live animals and products, airports are governed by strict regulations for quarantine and phytosanitary supervision; Pets (some laboratory animals), agricultural-pig, cattle, Horses, etc.

Source: CAAS // Cargo airports and airlines services

# Human Remain



Source: Customs air trays / Amazon



# Cargo and Mail



Conversation

Dangerous Goods

Where to go and  
delivery to



THANK YOU

Q & A

# References

Bruce, Peter J., Gao Yi,  
and King, John M. C.  
(2020). *Airline  
Operations: A practical  
guide*. USA.

Morrell, Peter S. and  
Klein, Thomas. (2022).  
*Moving Boxes By Air.  
The Economics of  
International Airline  
Logistics (2<sup>nd</sup> edition)*.  
USA.

IATA Course Textbook (2012).  
*Introduction to the Airline  
Industry*. IATA Training and  
Development Institute. Canada.

Sales, Michael. (2017). *Airline  
Logistics Management. Air  
Freight and the global supply  
chain. (2<sup>nd</sup> edition)*. USA.

