

Academic Reading & Writing

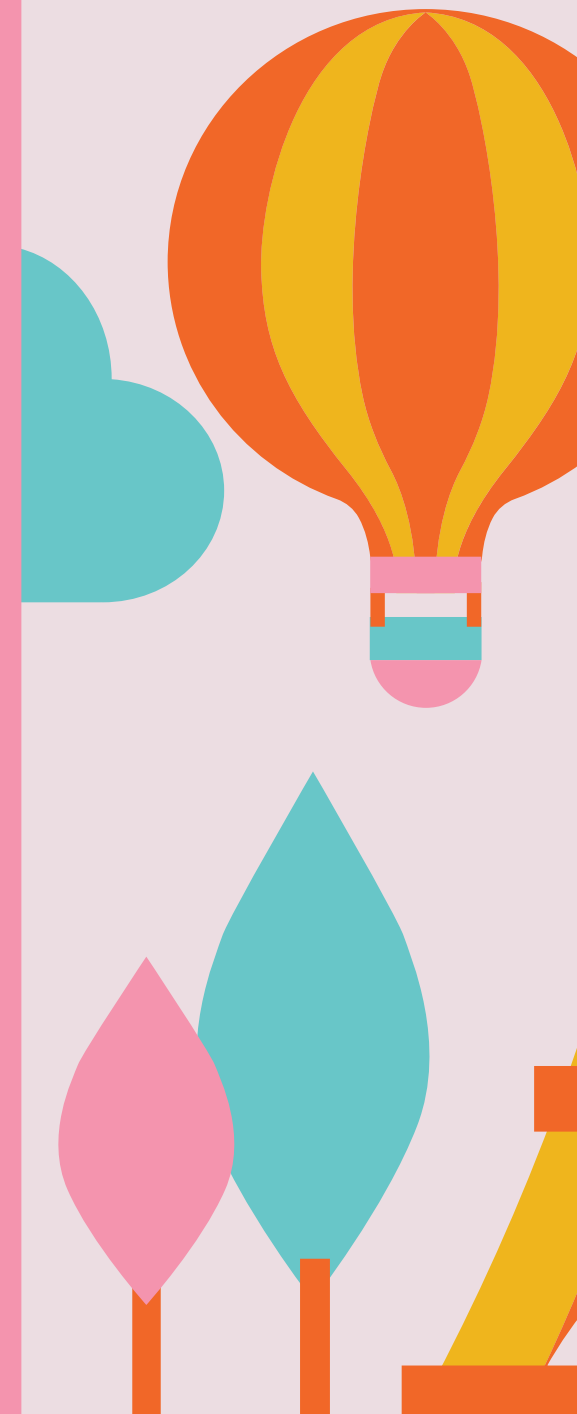
# SUPERSTITIONS ACROSS THE WORLD

Unit 3



# LESSON OUTCOMES

- Be able to identify the topics of texts.
- Be able to effectively identify supporting details within texts.
- Be able to write clear and effective topic sentences.
- Be able to write relevant supporting details that develop and clarify the topic sentence.



# VOcabuLARY REvIEW

“Check Out the Weirdest Superstitions Worldwide!”

<b>chore</b>	<b>consequence</b>	<b>constitute</b>
<b>follow suit</b>	<b>funeral</b>	<b>intact</b>
<b>set forth</b>	<b>steer clear of</b>	<b>taboo</b>
<b>unattended</b>		





# GRAMMAR

## Phrasal Verb

**Multi-word verbs are verbs that combine a main verb with one or two particles or prepositions, such as "up," "over," "in," or "down."**

**These constructions can **change the meaning** of the original verb in significant ways.**



There are **three main categories of multi-word verbs** (Cambridge Dictionary, 2024):

- **Phrasal verbs**
- **Prepositional verbs**
- **Phrasal-prepositional verbs**

# READING

## Reading for Topics

Reading for topics involves **identifying key themes and repeated** words or phrases in a text to help determine appropriate topics.

When certain words or concepts appear frequently, they often indicate **the main ideas or topics** of each section (British Council, n.d.).



# WRITING

## How to Write a Good Topic Sentence

Each topic sentence will include  
**a topic and a controlling idea.**

The controlling idea indicates the  
specific focus or direction that the  
paragraph will follow.

Therefore, a strong topic sentence  
should be **limited and specific,**  
concentrating on just one main idea,  
for example.



**[Topic]** Skincare is **[Controlling idea]** almost spiritual in Vietnam.

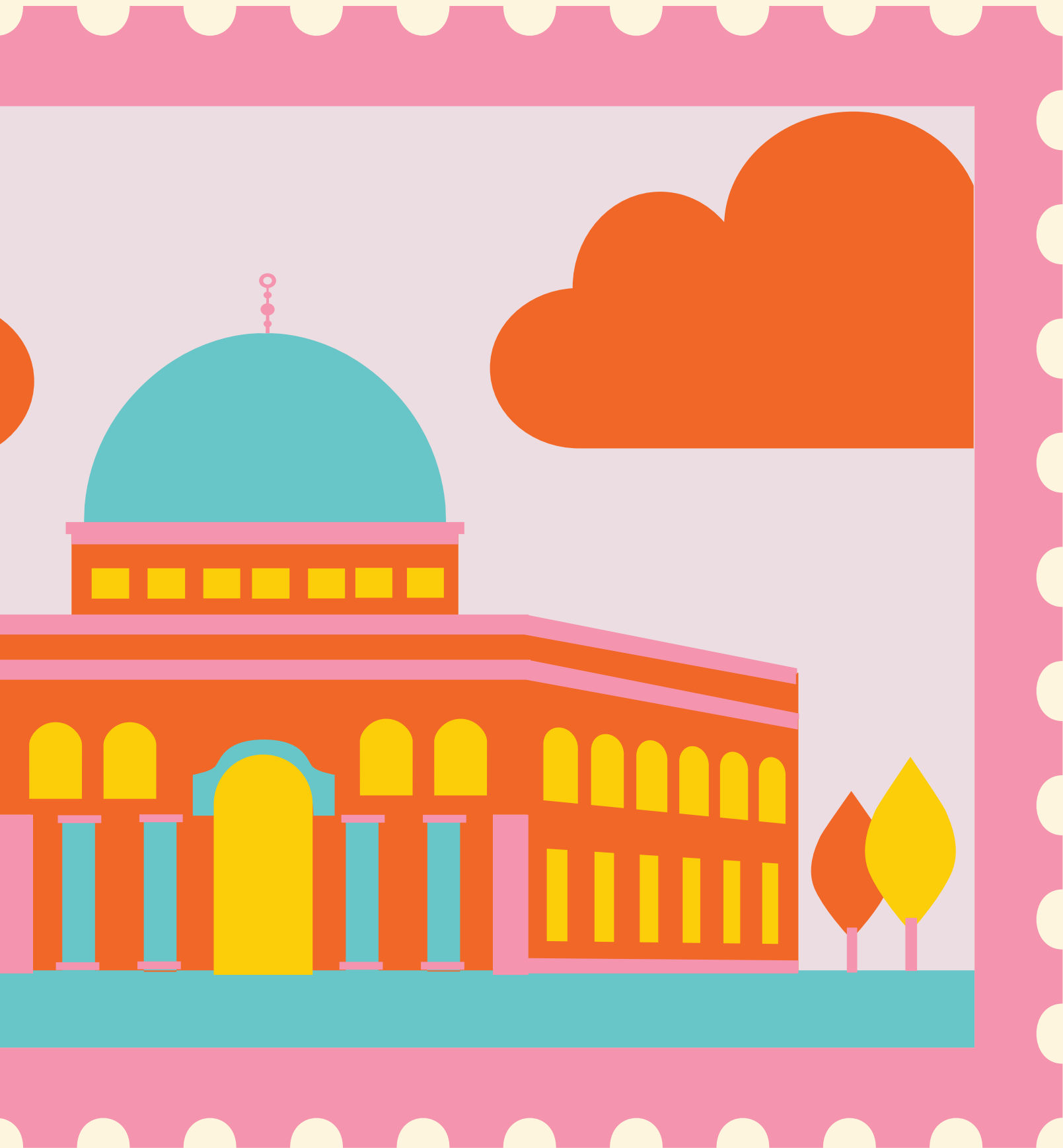


# VOcabuLARY REvIEW

“5 Curious Superstitions You’ll Find in Asia”

<b>folklore</b>	<b>myths</b>	<b>ideologies</b>
<b>nefarious</b>	<b>hoodlum</b>	<b>significant</b>
<b>idleness</b>	<b>complimenting</b>	<b>smudge</b>
<b>roughly</b>		

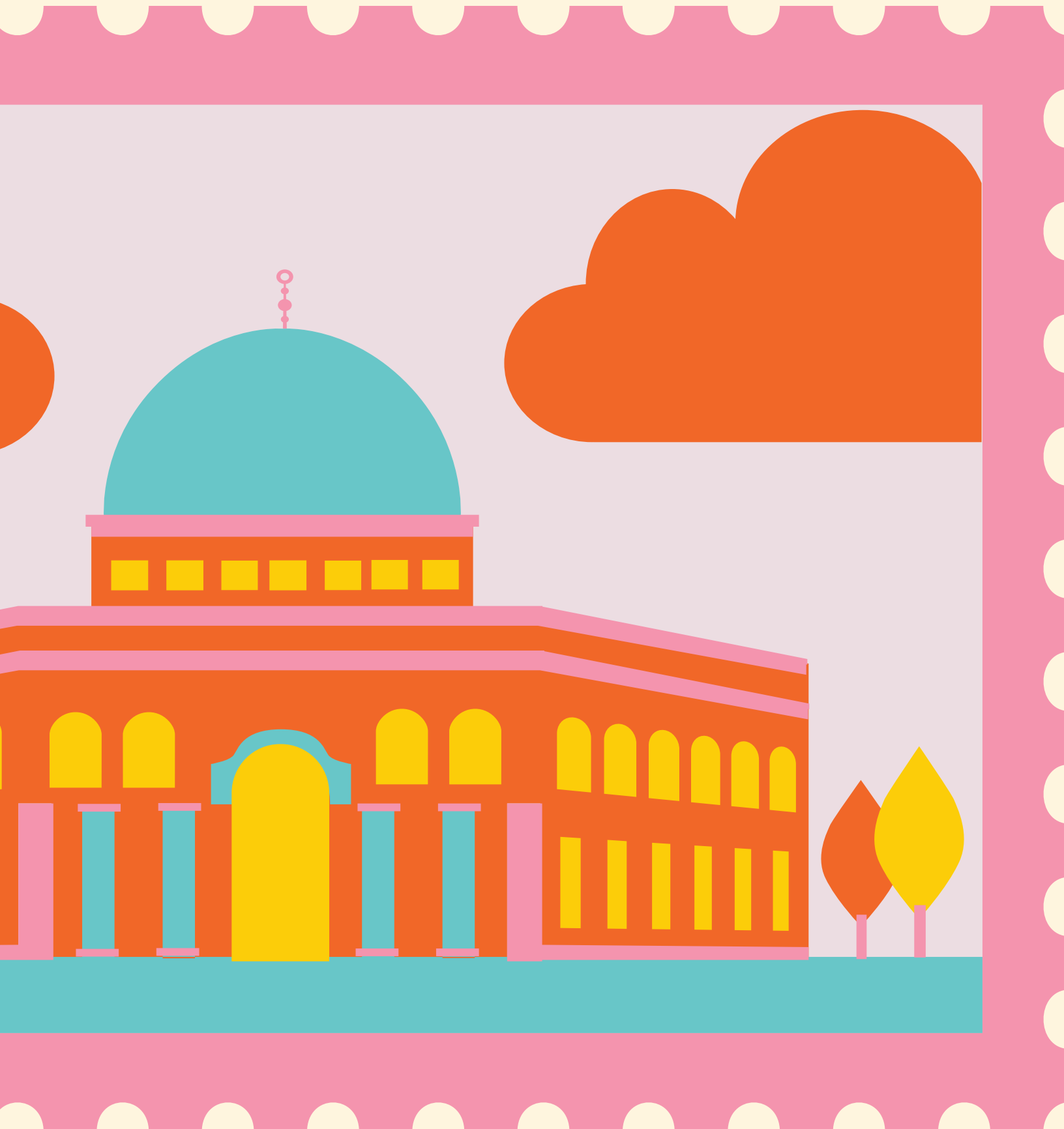




# GRAMMAR

## Collocation

Collocation refers to the common **pairing of two or more words** that often go together. This means certain words are frequently found next to each other in language.



**Collocation is a type of relationship between these words, and it typically involves **two main types: grammatical collocation and lexical collocation** (Aarts et al., 2014: 72).**

### **Grammatical Collocation**

**A type of construction where a verb, adjective, etc. must be followed by a particular preposition, or a noun must be followed by a particular form of the verb.**

### **Lexical Collocation**

**A type of construction in which particular nouns, adjectives, verbs, adverbs, etc. form predictable connections with other words.**

# READING

## Reading for Supporting Details

Supporting details in reading are **specific pieces of information** that enhance or clarify the main idea of a text. These can include **examples, facts, statistics, quotes, descriptions, and anecdotes**. Together, they provide evidence and context that reinforce the central message, helping readers gain a deeper understanding of the subject matter.



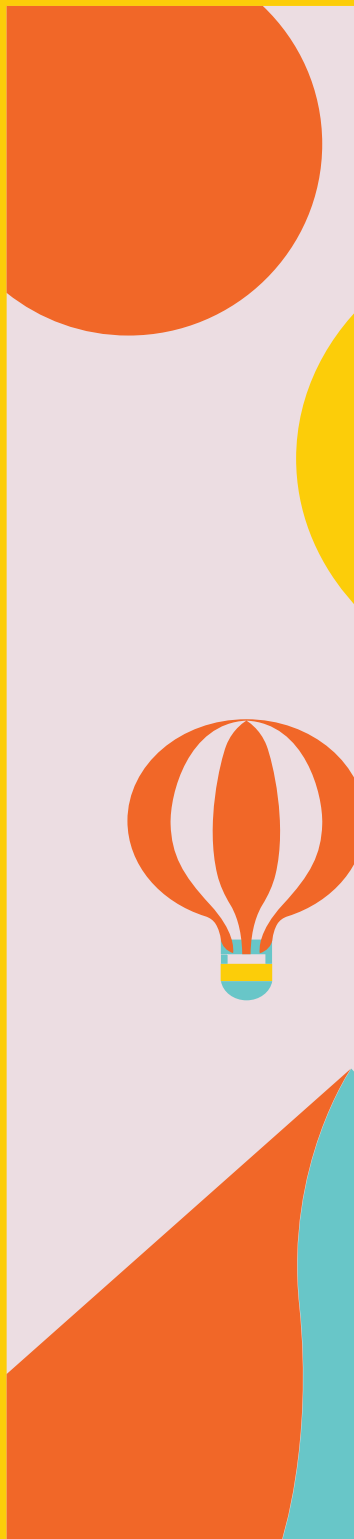
# WRITING

## Writing Supporting Sentences

To support the topic sentence, you should include supporting sentences that offer **detailed examples, explanations, and evidence related to the main idea**. These supporting sentences help to develop and clarify the topic sentence. Supporting sentences can be divided into **major** and **minor** types.



**[Topic Sentence]** The Japanese do not whistle at night for two reasons. **[Major]** The first one is of supernatural nature and lies in the fear that a monster might be drawn out by the whistling. **[Major]** The second reason is based in reality where 'snakes' is interpreted as people of the shadier sort. **[Minor]** It is said that in old Japan, human traffickers, thieves, and other criminals used whistling to communicate when getting up to their nefarious activities under cover of the night.



# Q&A

