

SET DESIGN
SCENE DESIGN



SPACE

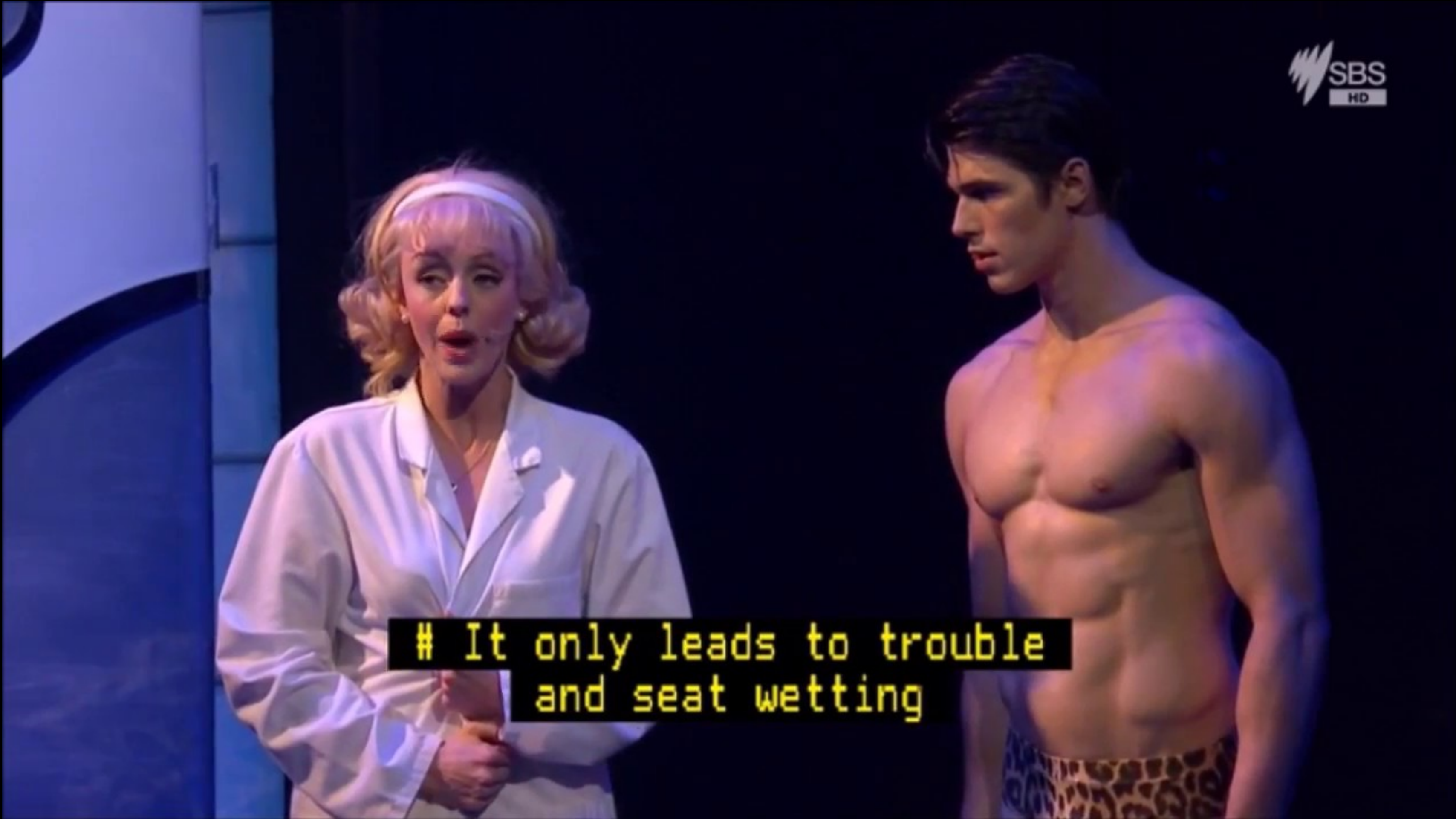


ACTION



Disney
FROZEN
THE BROADWAY MUSICAL





It only leads to trouble
and seat wetting

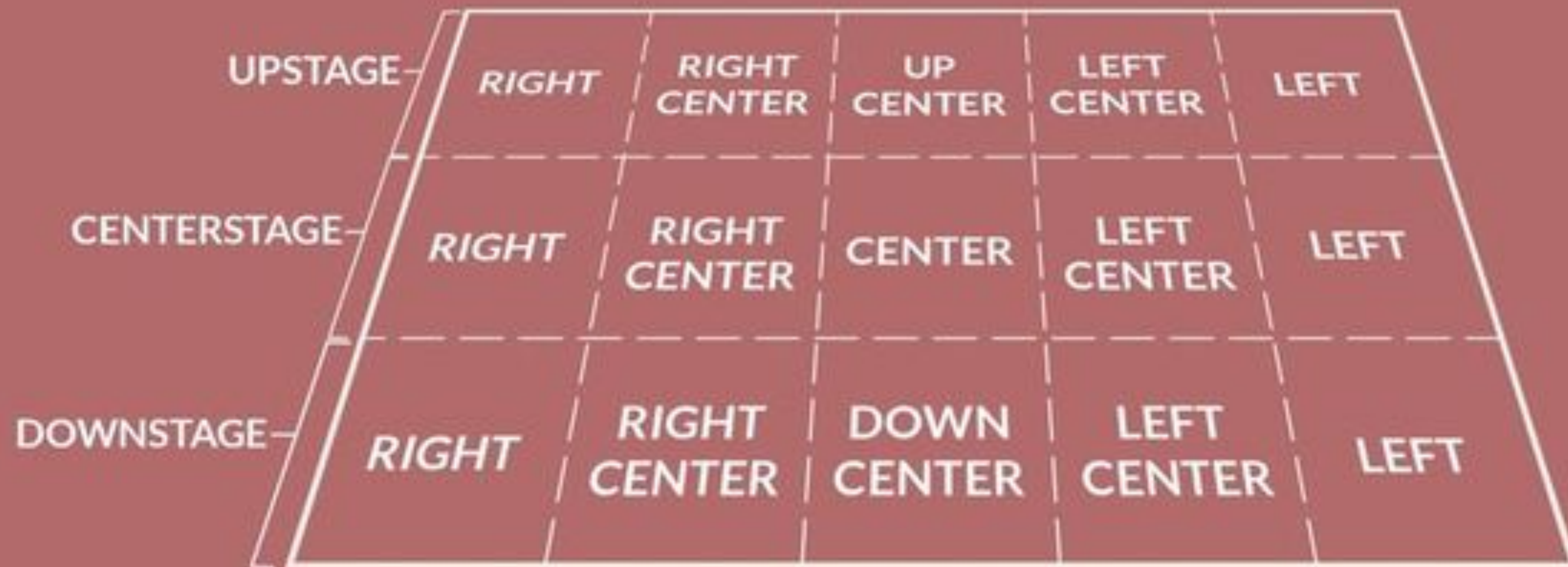
SCENE 1 = WHO , WHAT, WHEN, WHY , ACTION

IMAGINATION

MOOD TONE

ERA

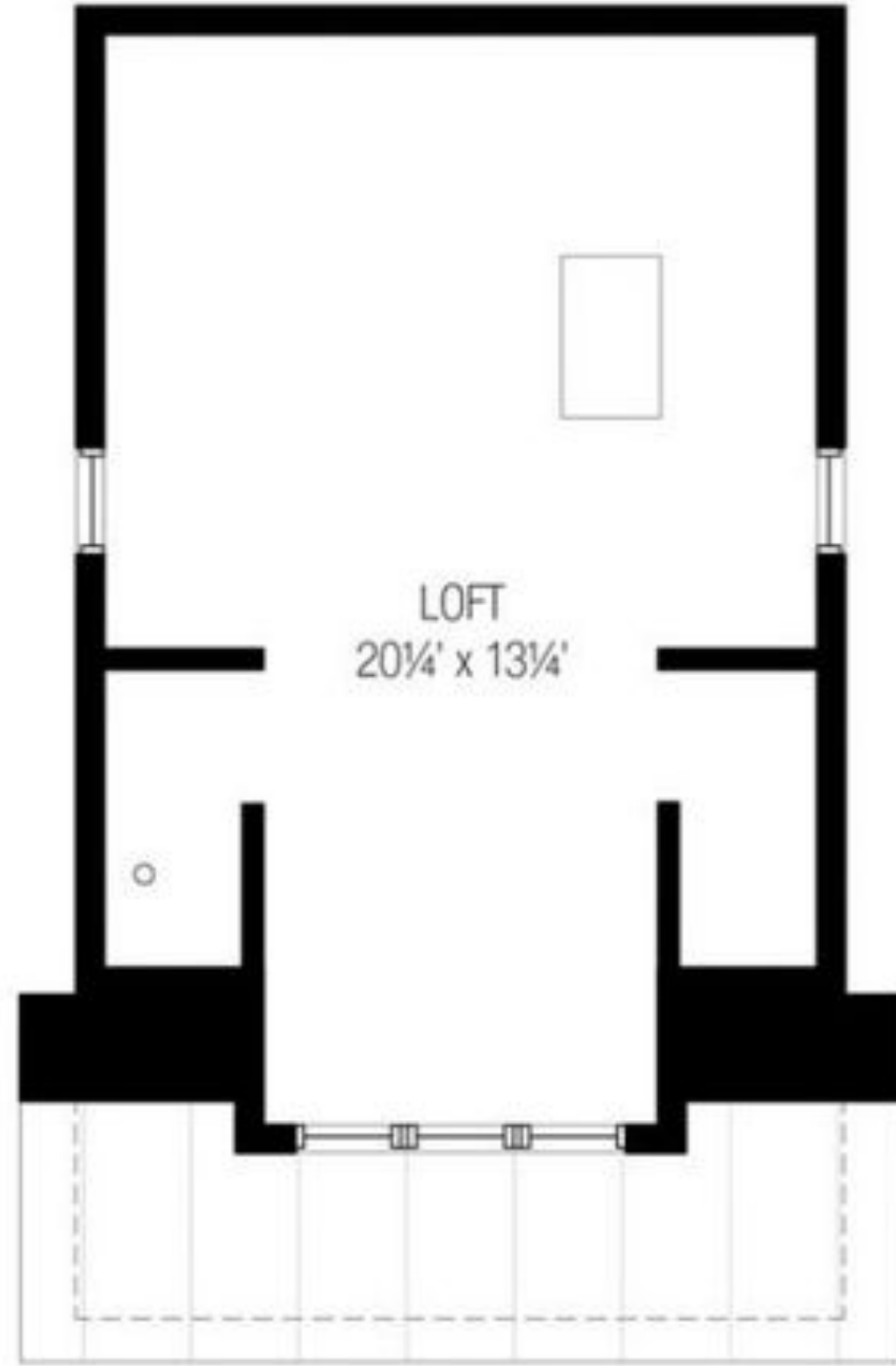
SENSE



AUDIENCE



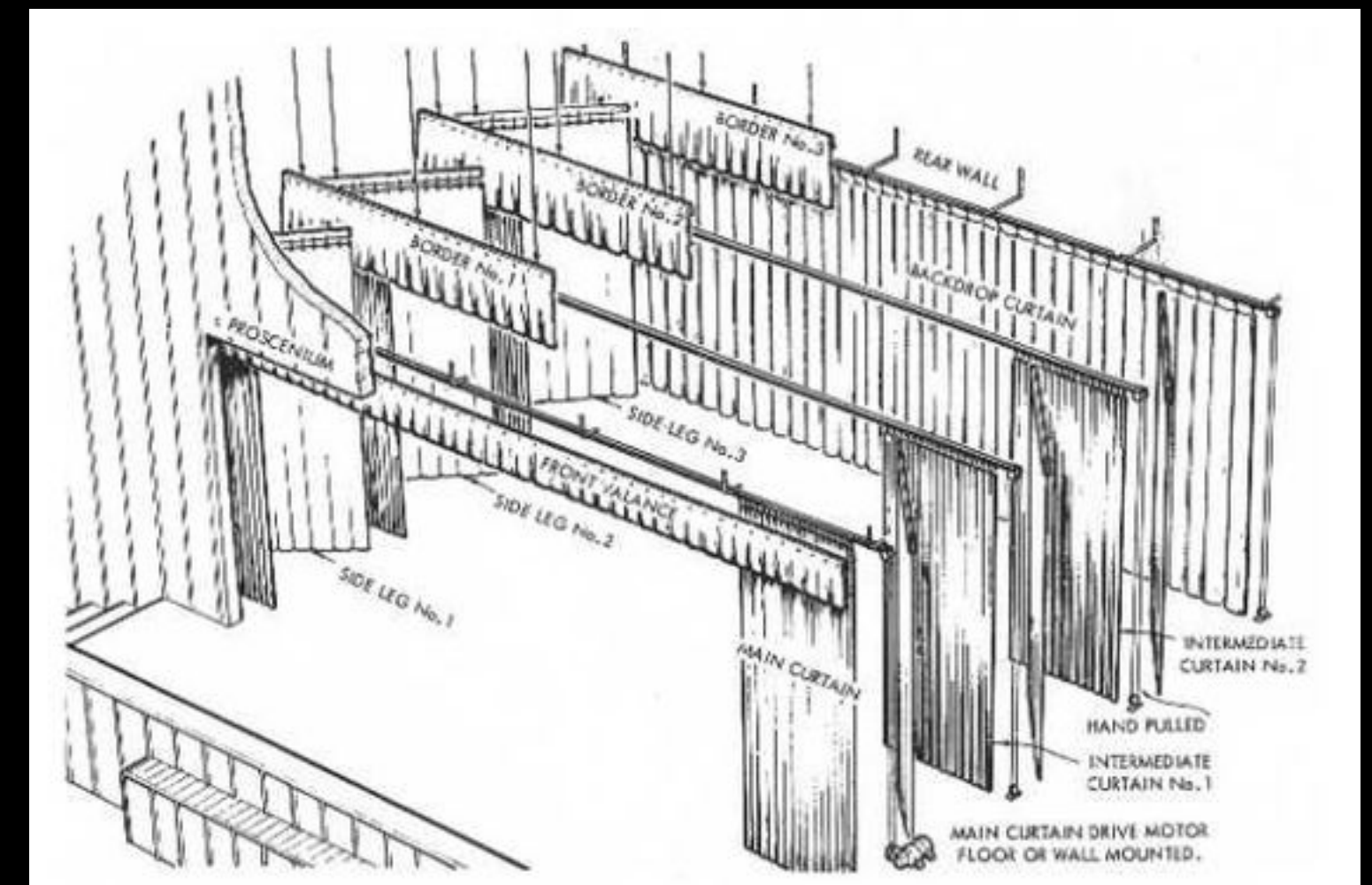
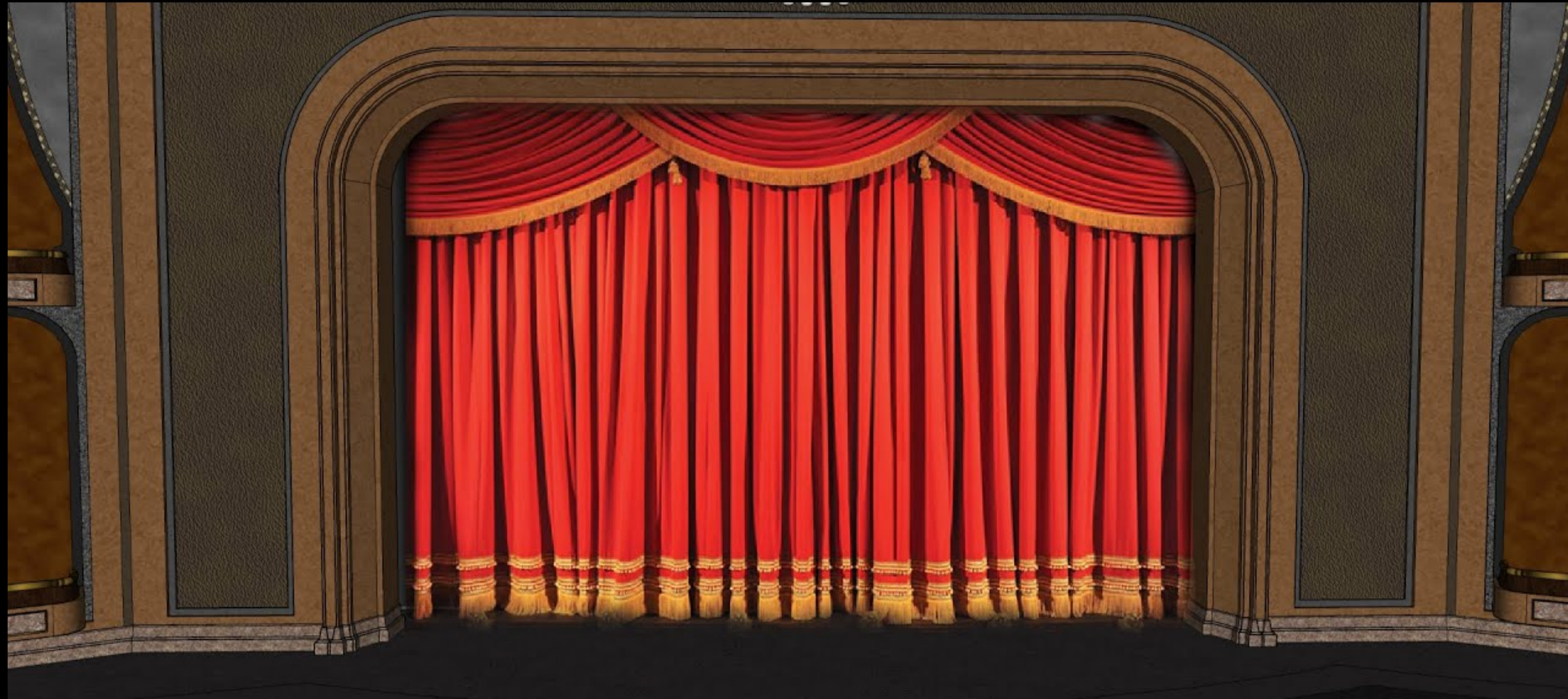
1st Floor



2nd Floor



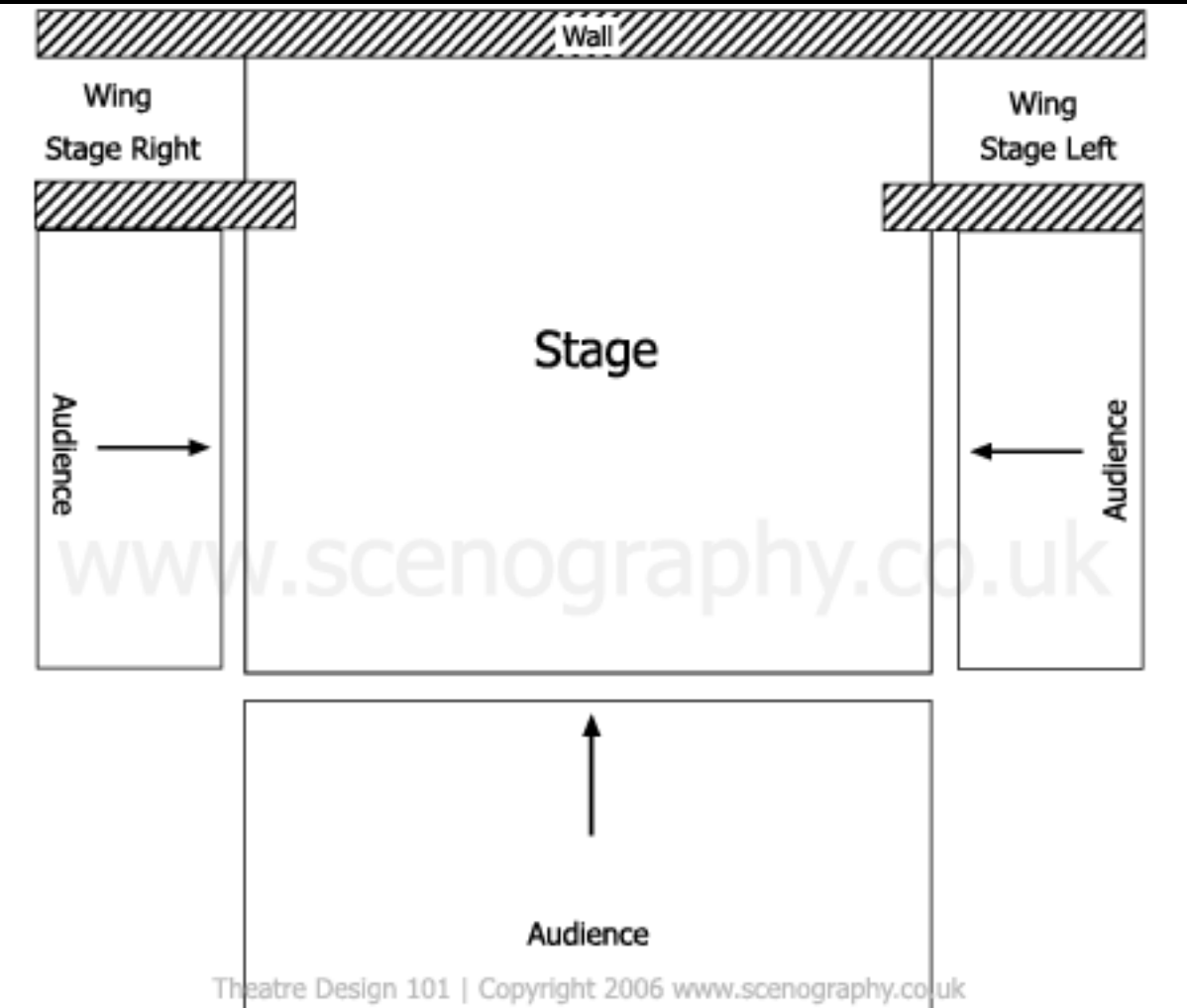
PROSCENIUM STAGE



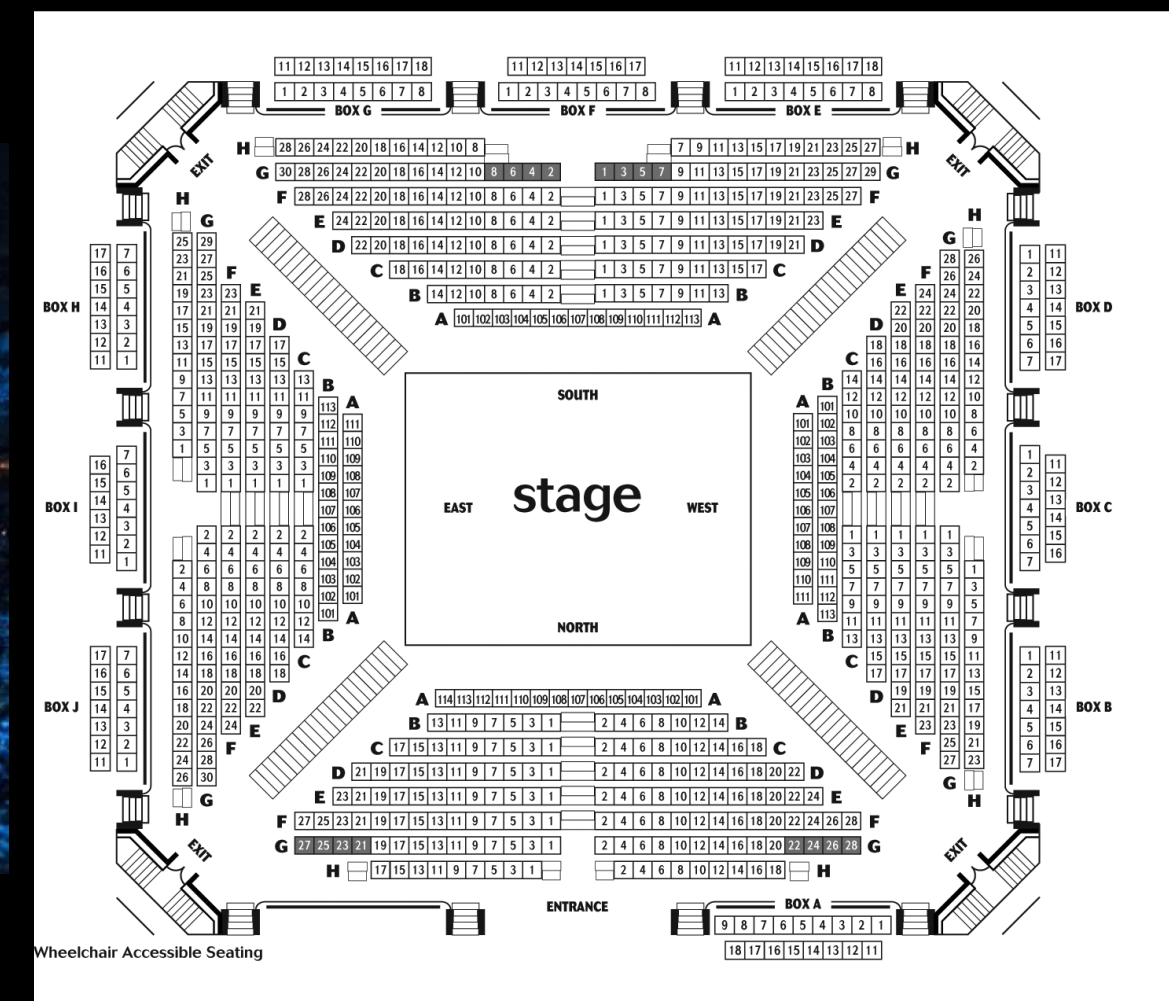
THRUST STAGE



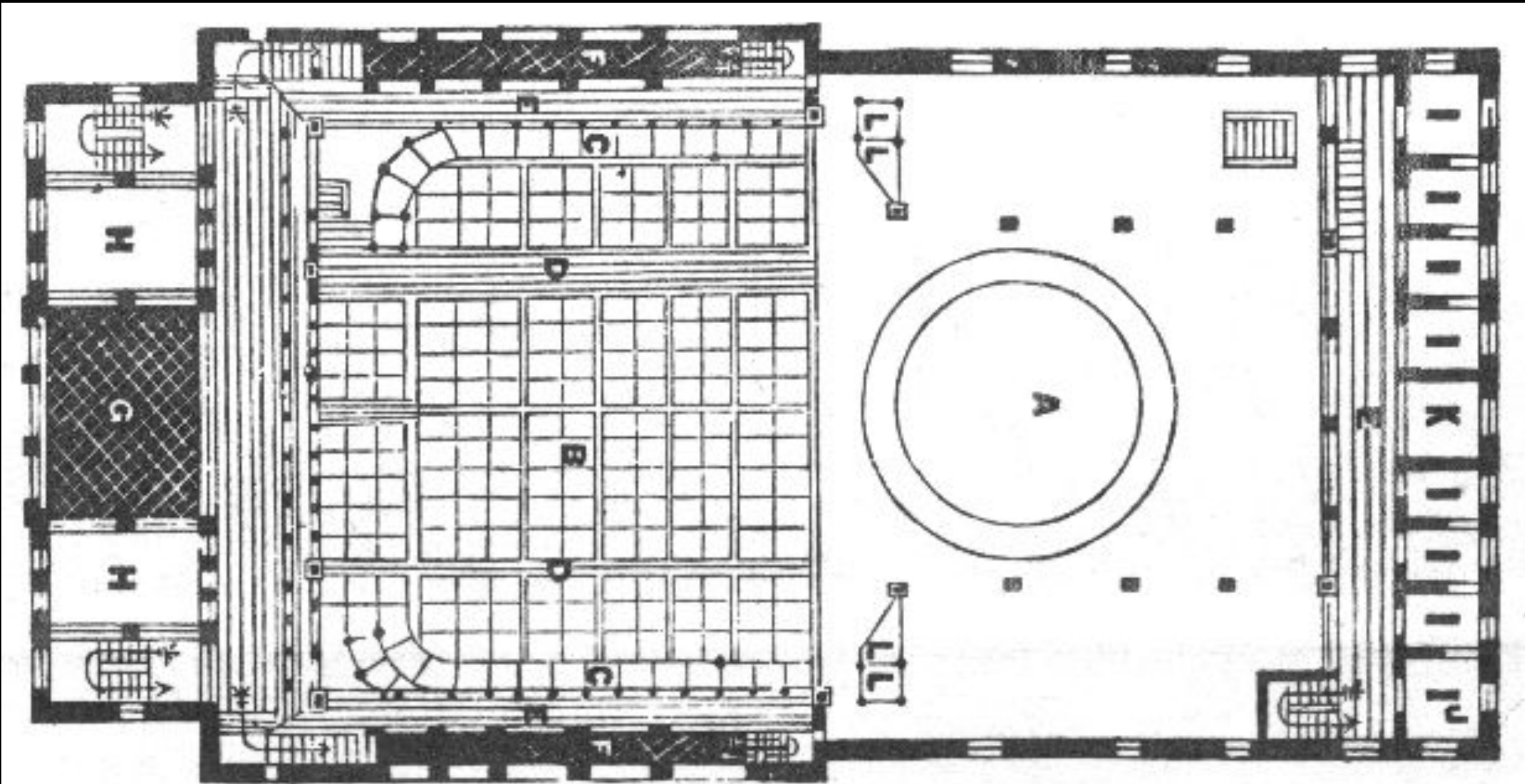
What is the
Globe Theatre?



ARENA STAGE



WRAP-AROUND STAGE



GROUND-PLAN OF THE KABUKIZA THEATRE— One of the most commodious theatres built in the semi-European style in Tokio, and opened in November, 1889.

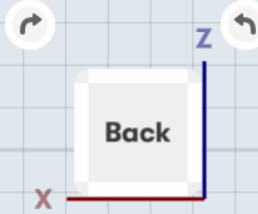
A.—Double Revolving Stage (in two concentric circles). B.—Pit. C.—Side-boxes. D.—Entrance-passages. E.—Passages. F.—Promenades. G.—Entrance-court. H.—Manager's Offices. J.—Green-room. K.—Stage-door. L.—Orchestra.



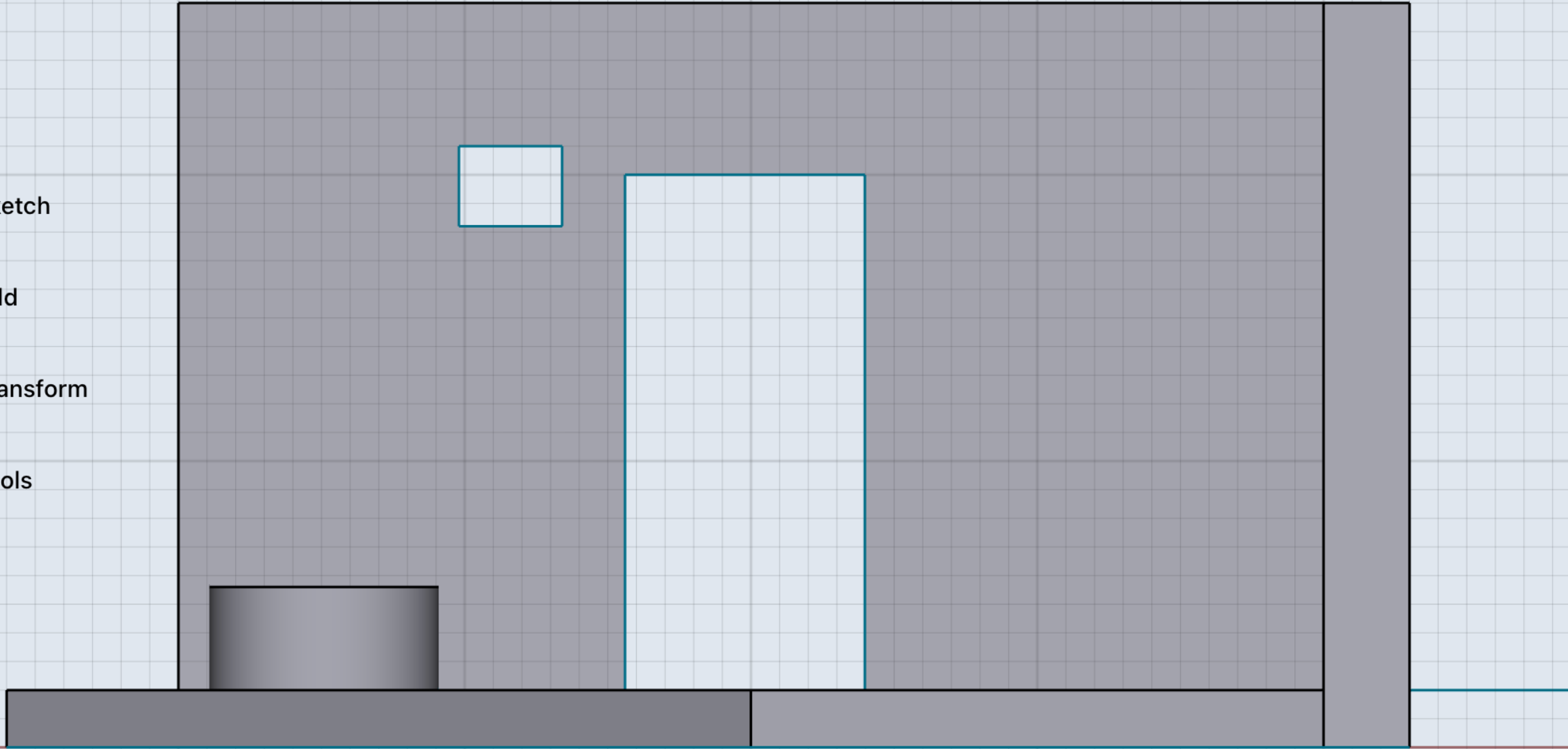
Shapr3D

Unlock all features See Subscriptions

5,000 mm

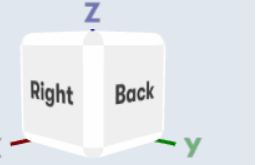


- Sketch
- Add
- Transform
- Tools

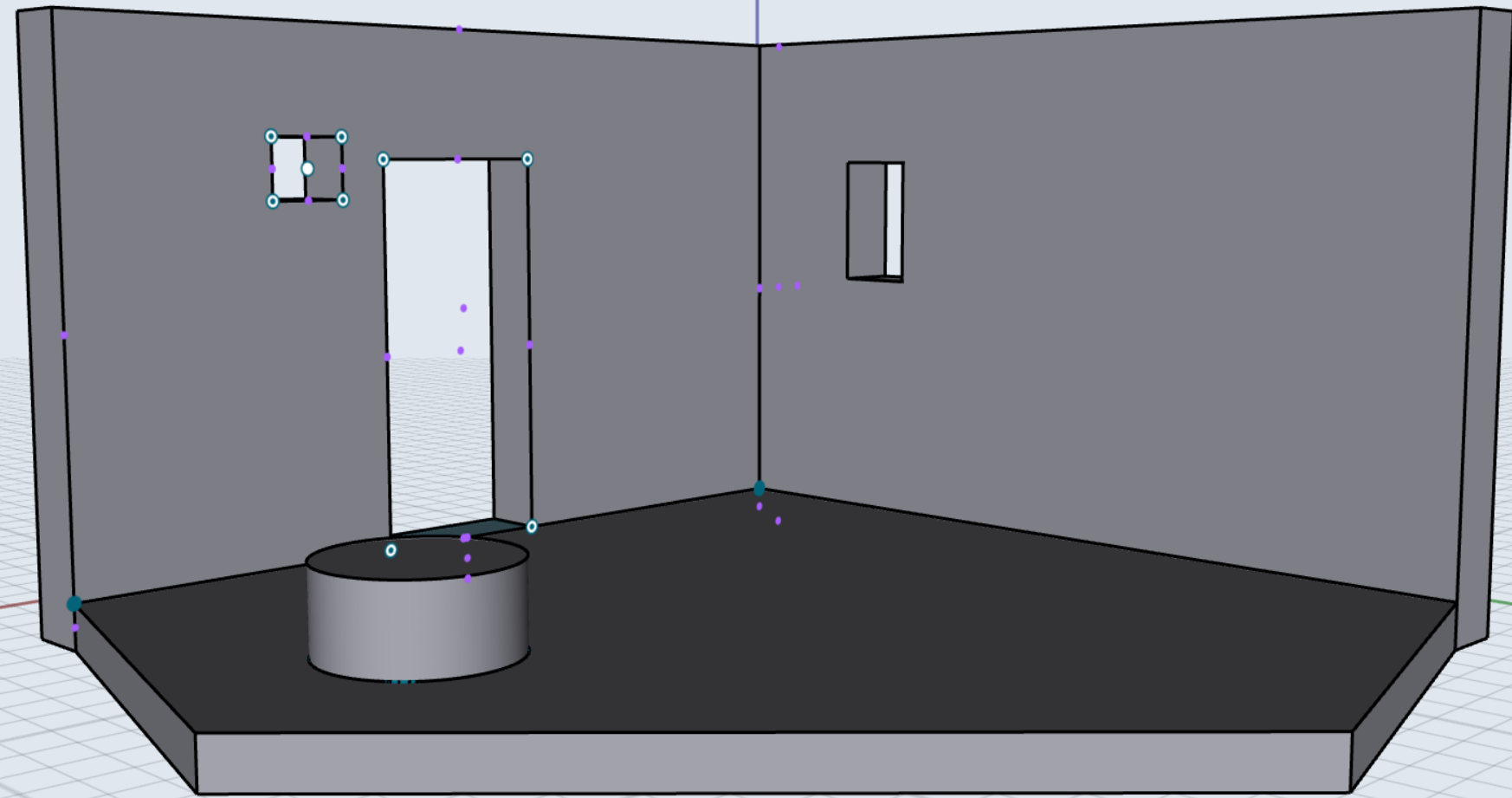


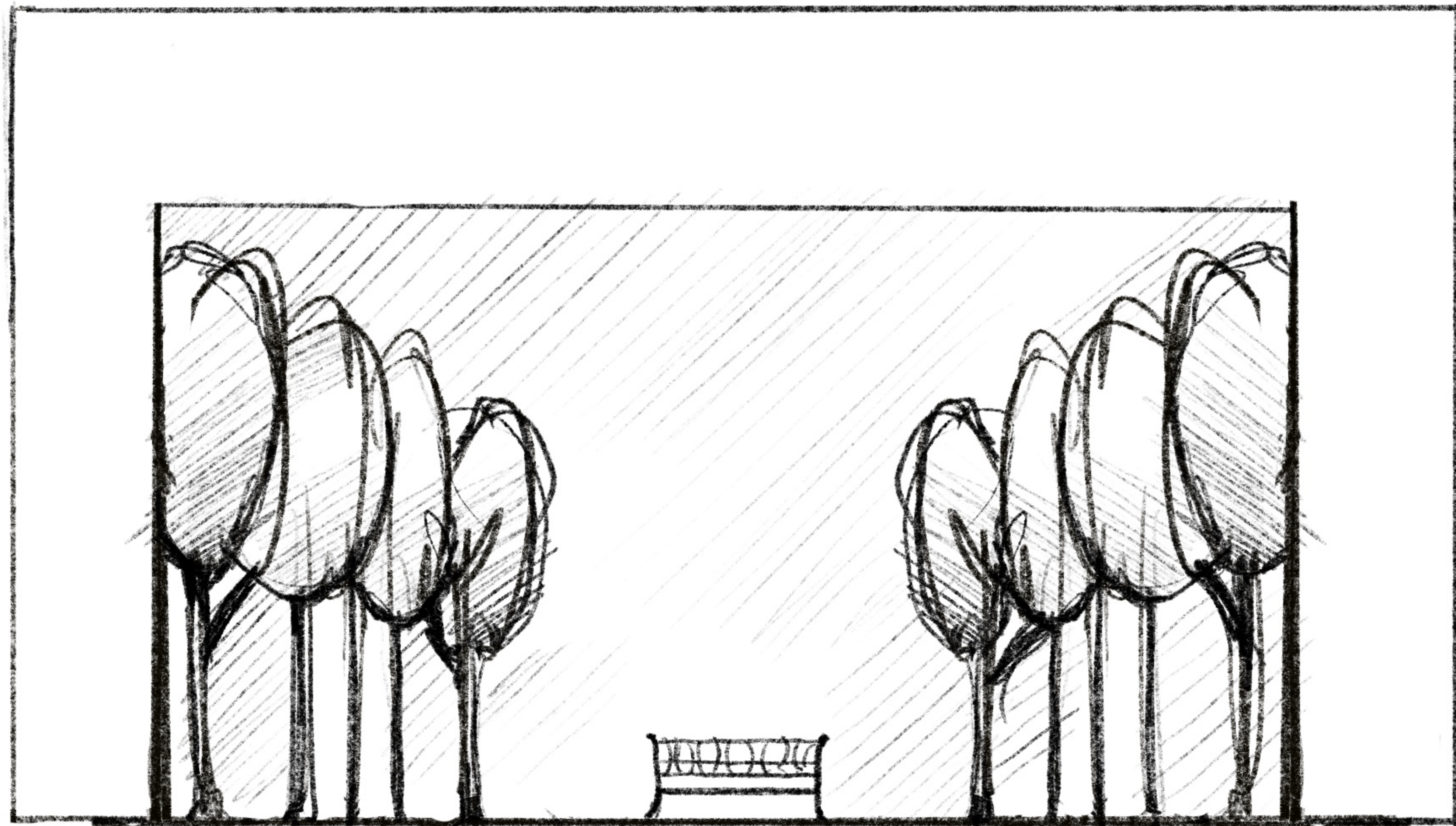
Unlock all features See Subscriptions

10,000 mm



- Sketch
- Add
- Transform
- Tools





SKETCH ACT 1

Collage	10 point
Fashion (Design)	30 point
Costume Design	10 point
Set Design For Play	10 point
Set design For Concert	10 point
Final Project	30 point

FINAL PROJECT

PLAY COSTUME FASHION CONCERT SET DESIGN