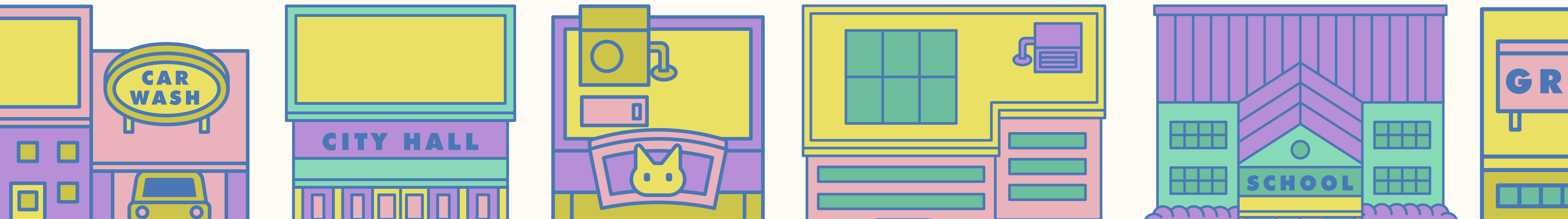




# UNIT 12

## EXPLAINING TRAVEL OPTIONS

ENGLISH FOR HOTEL PERSONNEL





- A.
- B.
- C.
- D.
- E.
- F.

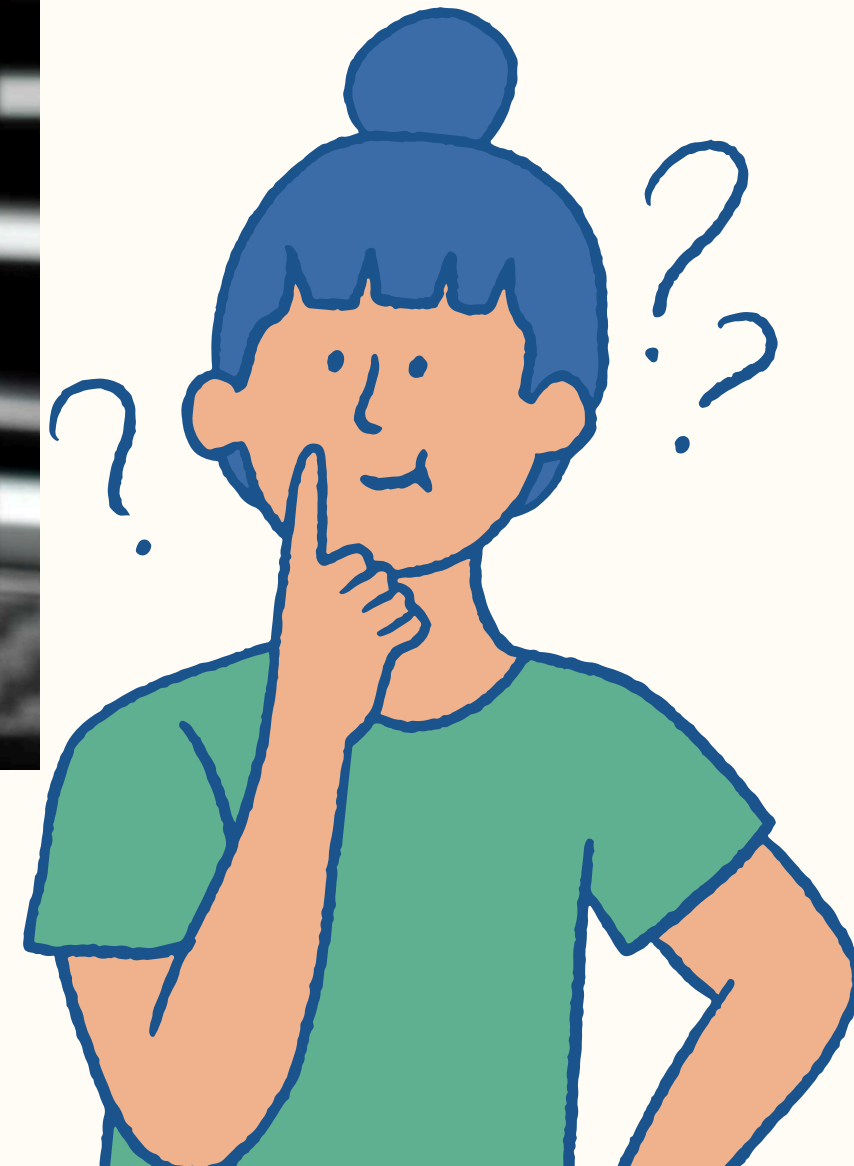





**G.**  
**H.**  
**I.**  
**J.**



# TRANSPORTATION IN THAILAND




1  12.1 Listen to the dialogues and complete the notes the guests made.

1 Cruise from harbour -  
leaves .....<sup>1</sup>  
Ferry from jetty near  
.....<sup>2</sup> - leaves  
7.30 and 11.00 - returns  
3.30 and .....<sup>3</sup>  
Take .....<sup>4</sup>  
from hotel

2 Take .....<sup>5</sup> to Central  
Station or bus number .....<sup>6</sup>  
Art gallery - bus number 42 from  
.....<sup>7</sup> but not between  
.....<sup>8</sup> and .....<sup>9</sup> o'clock

3 Boat from  
Westminster Pier -  
.....<sup>10</sup> hours  
Or .....<sup>11</sup> from  
Waterloo  
Or .....<sup>12</sup> to  
Richmond, then  
.....<sup>13</sup>

 12.1 Match 1–9 with a–i to make sentences. Then listen again and check.

- 1  It would be a good idea
- 2  Well, why not take the ferry
- 3  There's a small café, but I'd recommend
- 4  You can take the underground
- 5  Why don't you leave
- 6  Your best option is to
- 7  In my opinion,
- 8  You could take
- 9  How about

- a taking a packed lunch from the hotel.
- b taking the underground to Richmond, then the boat?
- c your car here and use public transport?
- d to go on one of the organized cruises from the harbour.
- e take bus number 42 from Central Station to the gallery.
- f the train from Waterloo.
- g from the jetty near the market square?
- h to Central Station.
- i the best way to get to Hampton Court is by riverboat.

## ! Expressions to learn

Could you tell us how to get there?

It would be a good idea to go on ...

Why don't you leave your car here?

It's much more convenient.

Avoid travelling between ... and ... in the afternoon.

You could take the train from ...

How about taking the underground to ... , then the ...?

Take the District line to ... then change to the ...

## ! New words to use

congested

credit

cruise

deposit

ferry

heavy (traffic)

in advance

jetty

organized

refundable

stamp (a ticket)

strip (of tickets)

ticket machine

top up (a card)

underground

valid

zone



Glossary page 102

## Recommending, suggesting and advising

Look at these examples showing the form of the verb which follows expressions used to recommend, suggest and advise.

*It would be a good idea **to (take)** ...*

*Why not **(take)** the ferry ...?*

*I'd (strongly) recommend **(taking)** ...*

*Your best option is **to (take)** ...*

*You can/could **(take)** ...*

*How about **(taking)** ...?*

*In my opinion, the best way to **(get to)** ...*

## Recommending, suggesting and advising

- Expressions for recommending, suggesting and advising are followed by different verb forms.
- Use *to* + infinitive after some noun phrases.

*In my opinion, the best way to see ...*

*It would be a good idea to take ...*

- Use a personal pronoun + infinitive after *recommend*, or use the *-ing* form without a personal pronoun.

*I recommend you buy ... I recommend taking ...*

- Use the infinitive after *Why not* and modal verbs.

*Why not buy ... You can/could take ...*

- Use the infinitive with *to* after *Your best option is*.

*Your best option is to go ...*

- Use the *-ing* form after a preposition.

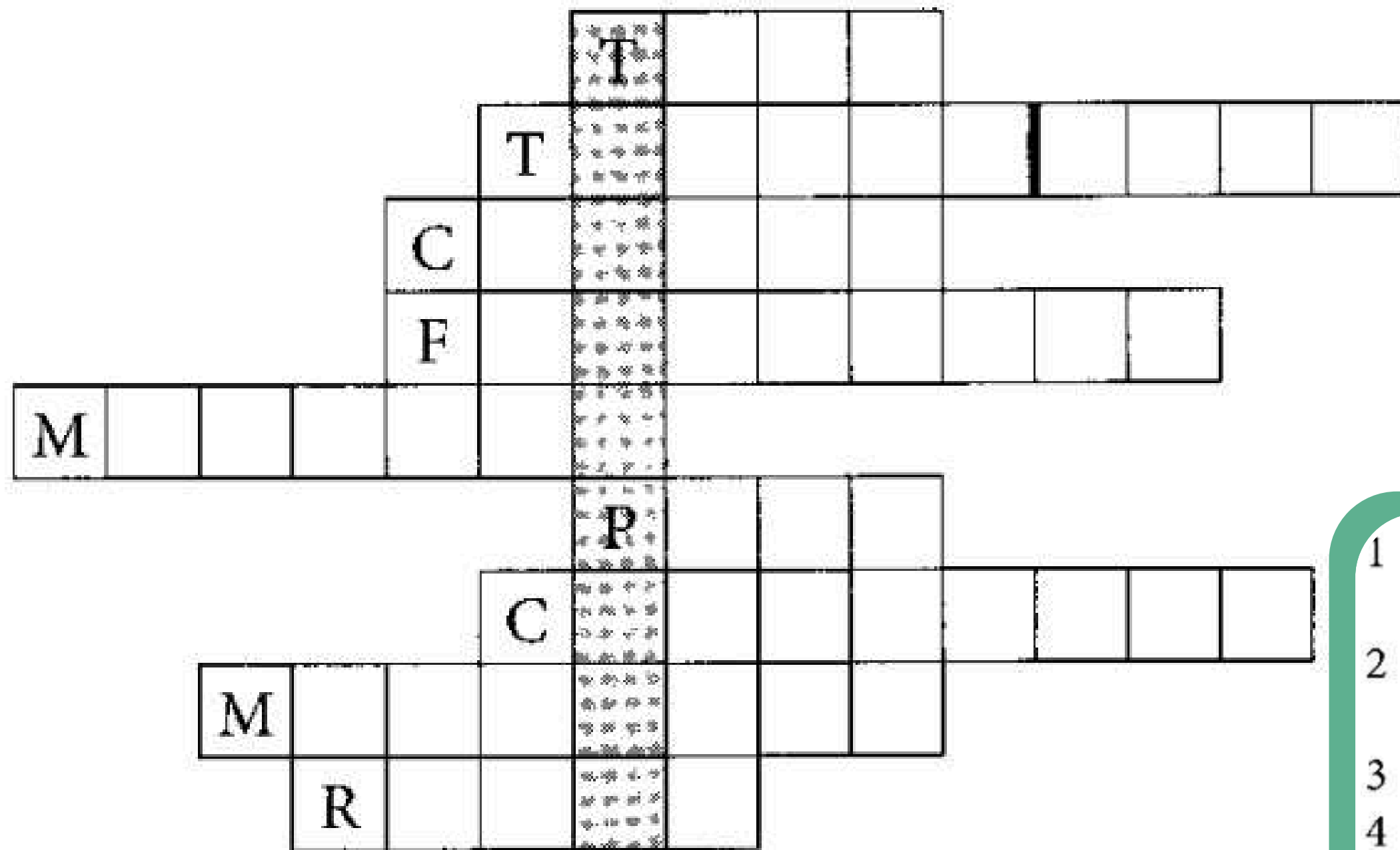
*How about taking ...*

Underline the correct alternative.

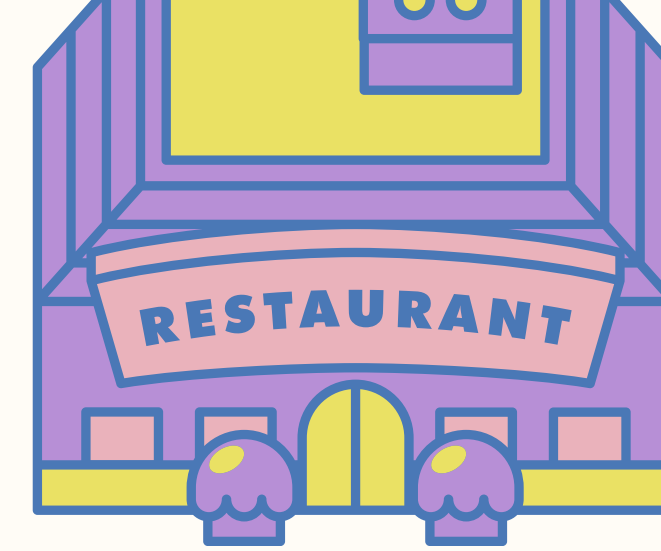
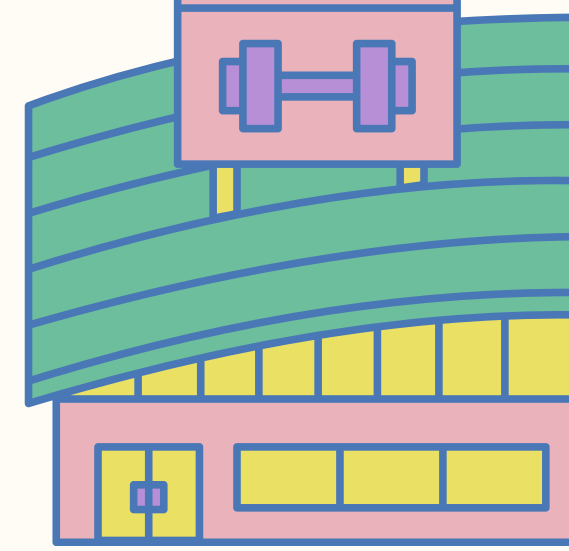
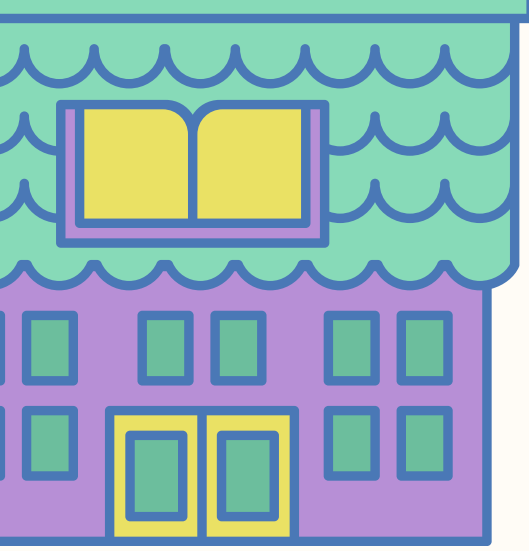
- 1 It would be a good idea *visit/to visit/visiting* the cathedral in the evening.
- 2 You could *take/taking/to take* the cable car to the top of the mountain.
- 3 In my opinion, the best way *to see/seeing/see* the harbour is by boat.
- 4 I'd recommend *to buy/buy/buying* a strip of tickets.
- 5 Why not *go/to go/going* by riverboat?
- 6 You can *take/to take/taking* the bus – it stops opposite the hotel.
- 7 Your best option is *to rent/renting/rent* a car.
- 8 How about *to visit/visit/visiting* the old town?

Put the words in the correct order.

- 1 a good idea / it would be / the ferry / at 9.30 / to take  
*It would be a good idea to take the ferry at 9.30.*.....
- 2 to travel / it's / in the city centre / much more convenient /  
by tram  
.....
- 3 use / why don't you / your car / public transport / leave /  
here / and  
.....?
- 4 between four and five o'clock / avoid / in the afternoon /  
travelling  
.....
- 5 then / to the underground / take the bus / and / change /  
to Waterloo  
.....
- 6 the cinema / could you / please / to get to / how / tell us  
.....?

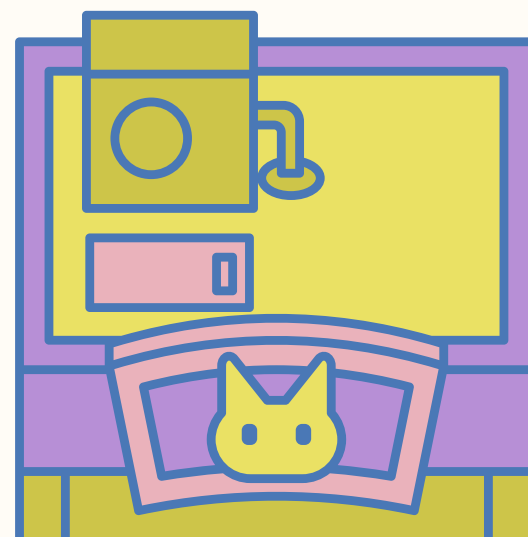
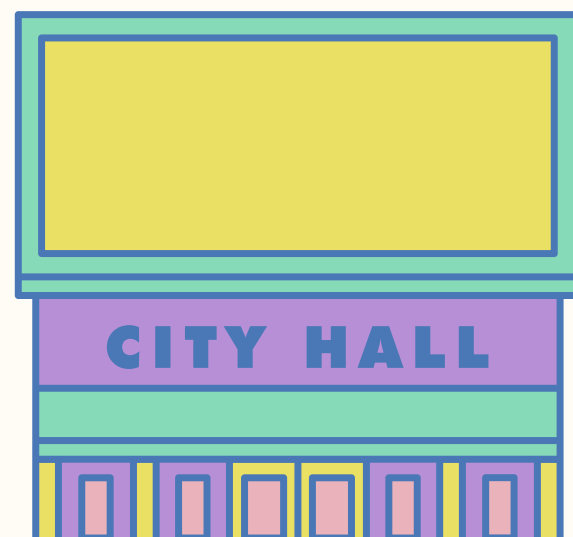


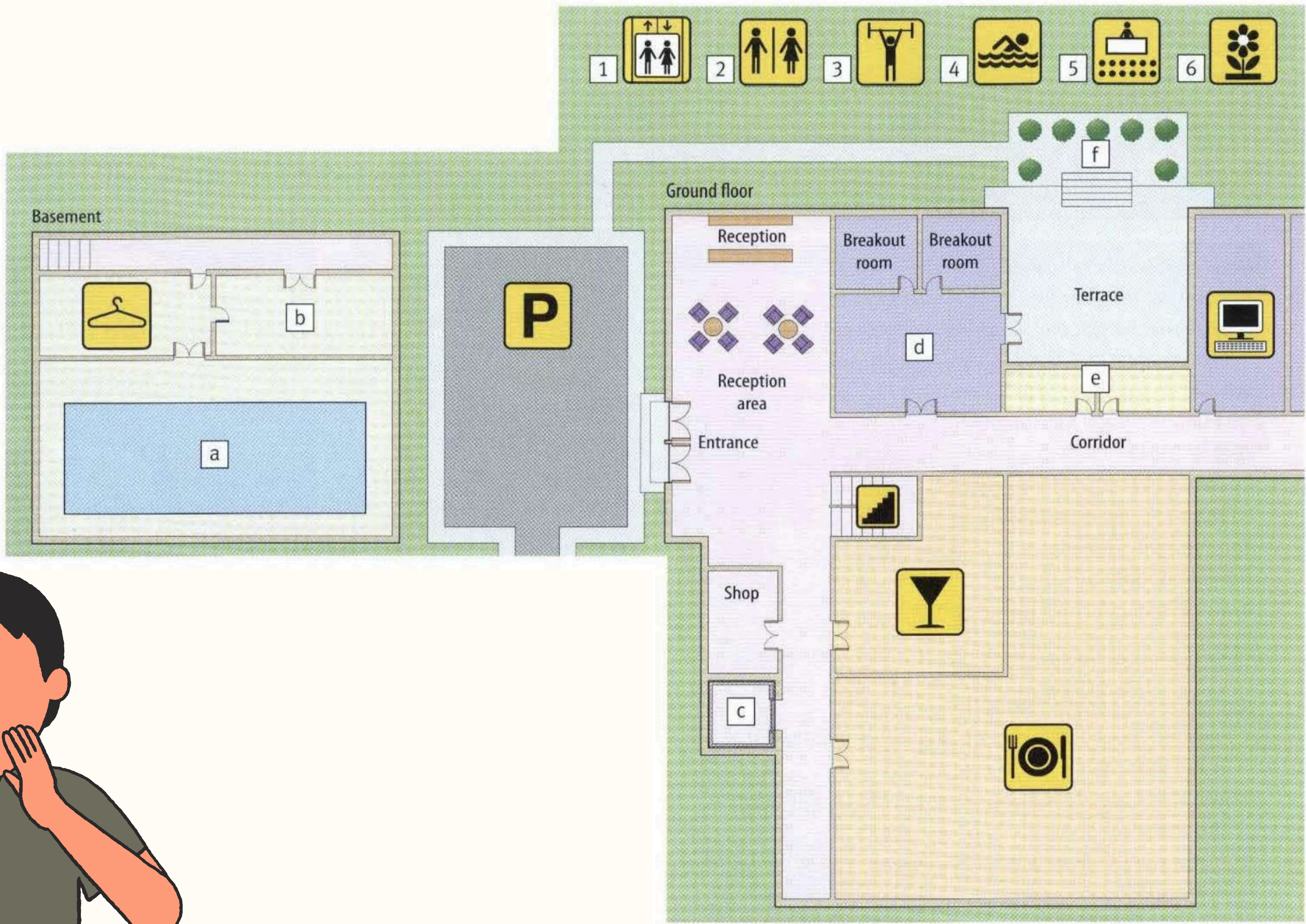
- 1 This electric vehicle travels on rails through the city centre. (4)
- 2 Buy this form of identification so your bus, train or underground tickets cost less. (6, 4)
- 3 Leave one form of transport and get onto another. (6)
- 4 A railway on a steep hill pulled up on cables. (9)
- 5 Usually between eight and twelve people can travel together in this. (7)
- 6 The place where boats or small ships can let passengers get on or off. (4)
- 7 The large, open central part of a railway station or airport. (9)
- 8 This vehicle travels on just one rail. (8)
- 9 The way that you follow to get from one place to another. (5)




# UNIT 13

## GIVING DIRECTIONS





 **13.1** Listen again and complete the sentences.

- 1 ... to the third floor. Just ..... the reception area and past the shop.
- 2 Can you tell me how ..... the swimming pool, please?
- 3 Go ..... the stairs, ..... the corridor and then into the changing rooms on .....
- 4 You can either ..... the changing rooms ..... a blue door, which will ..... you into the fitness centre ...
- 5 Or ..... the corridor, past the changing rooms and ..... the next door on the right.
- 6 On a warm day, it's nice to go ..... the terrace.
- 7 From there you can go ....., then round the hotel ..... the car park.
- 8 As you ..... of the conference room, they're ..... left.

## ! Expressions to learn

You can take the lift to the ...

Go down the stairs, along the corridor and then into ...

Continue along the corridor, past the ...

Take the next door on the right.

Follow the sign for the business centre.

As you come out of the ... , they're on the left.

When you leave the hotel, turn left ...

Take the second road on your left.

You'll see ... on your right.

Continue until you come to ...

## ! New words to use

changing room

corridor

footpath

steps

coast

either

library

town hall

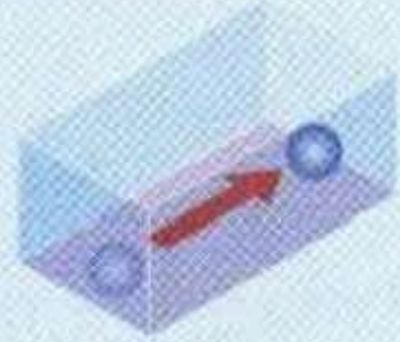
continue

follow

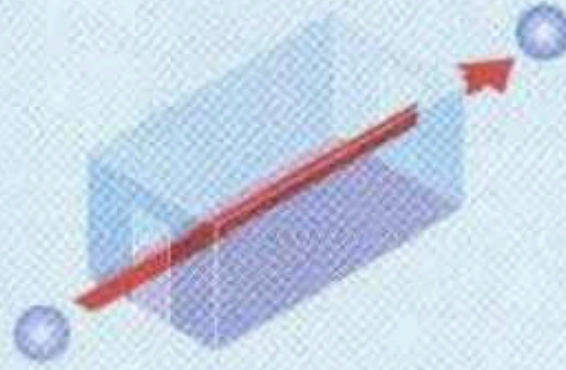
reception area

track

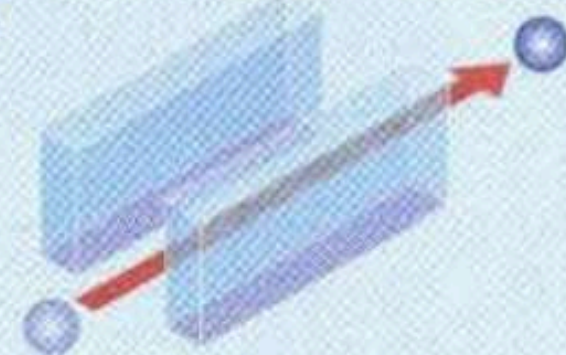
## Prepositions of direction



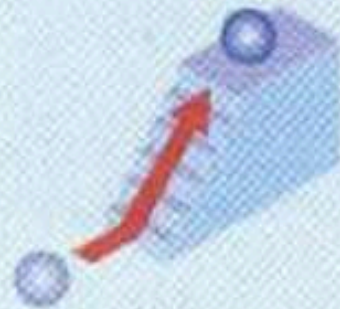
across



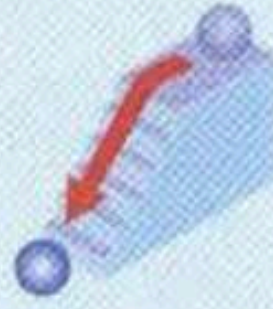
through



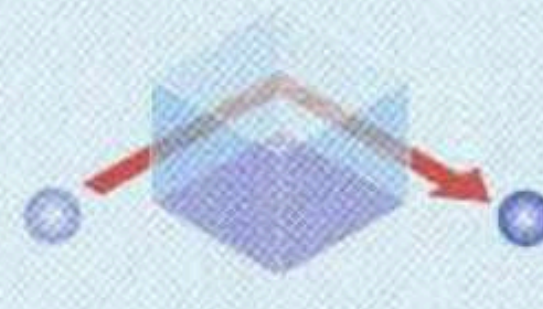
along



up



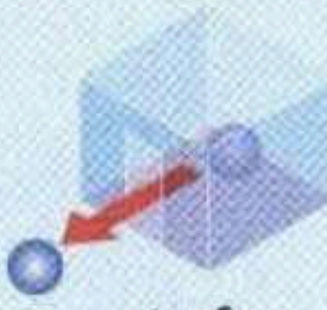
down



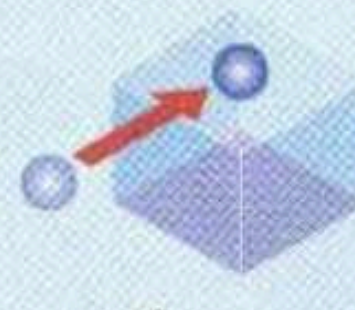
round



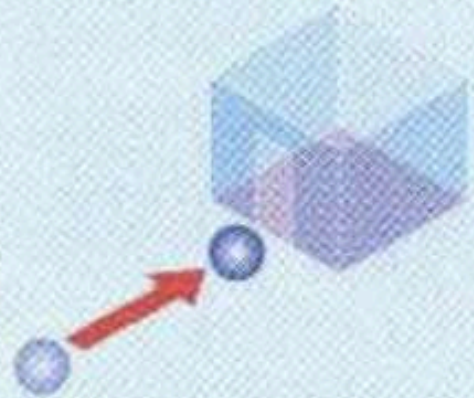
into



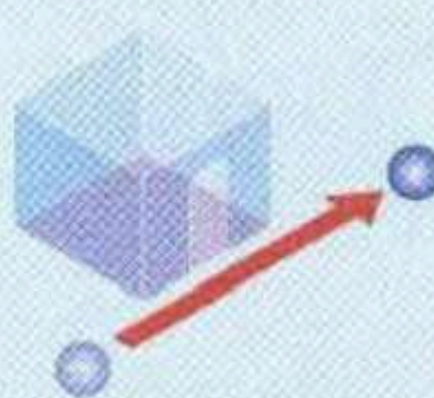
out of



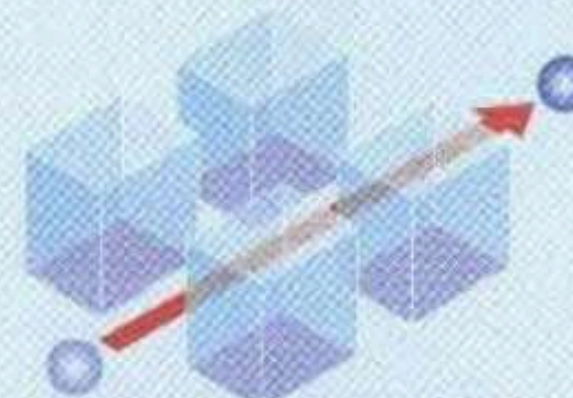
onto



to



past



straight on

Underline the correct alternative.

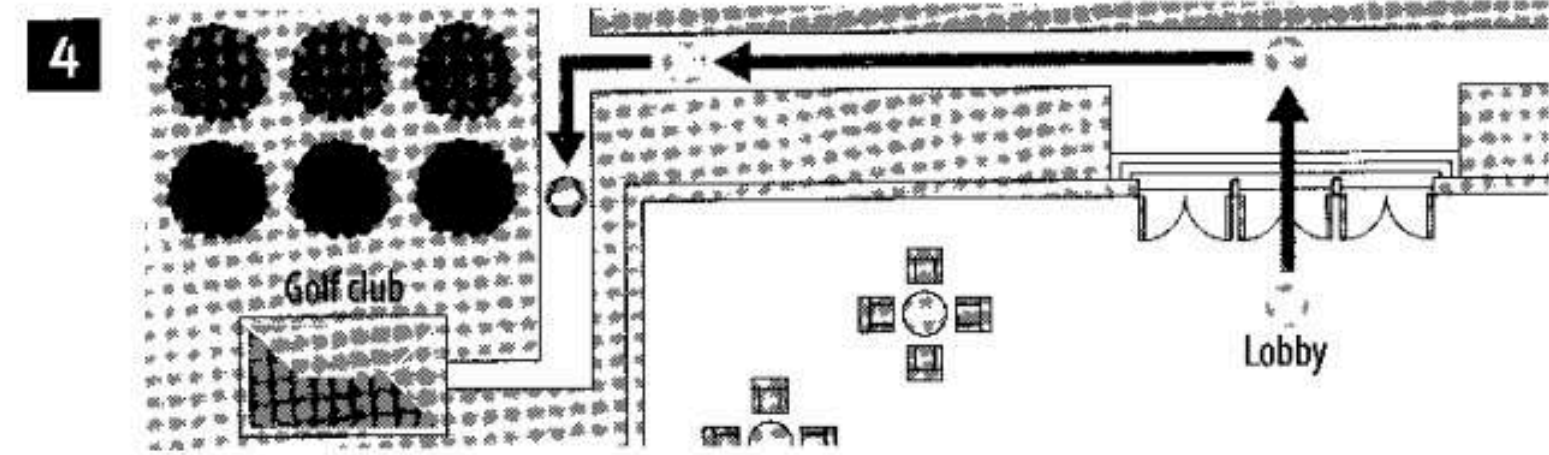
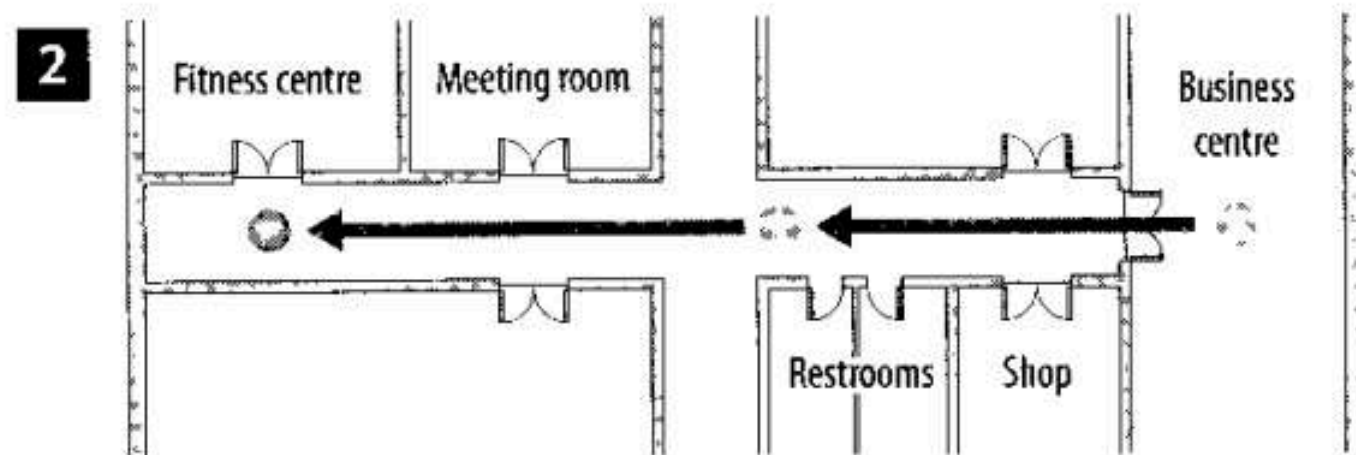
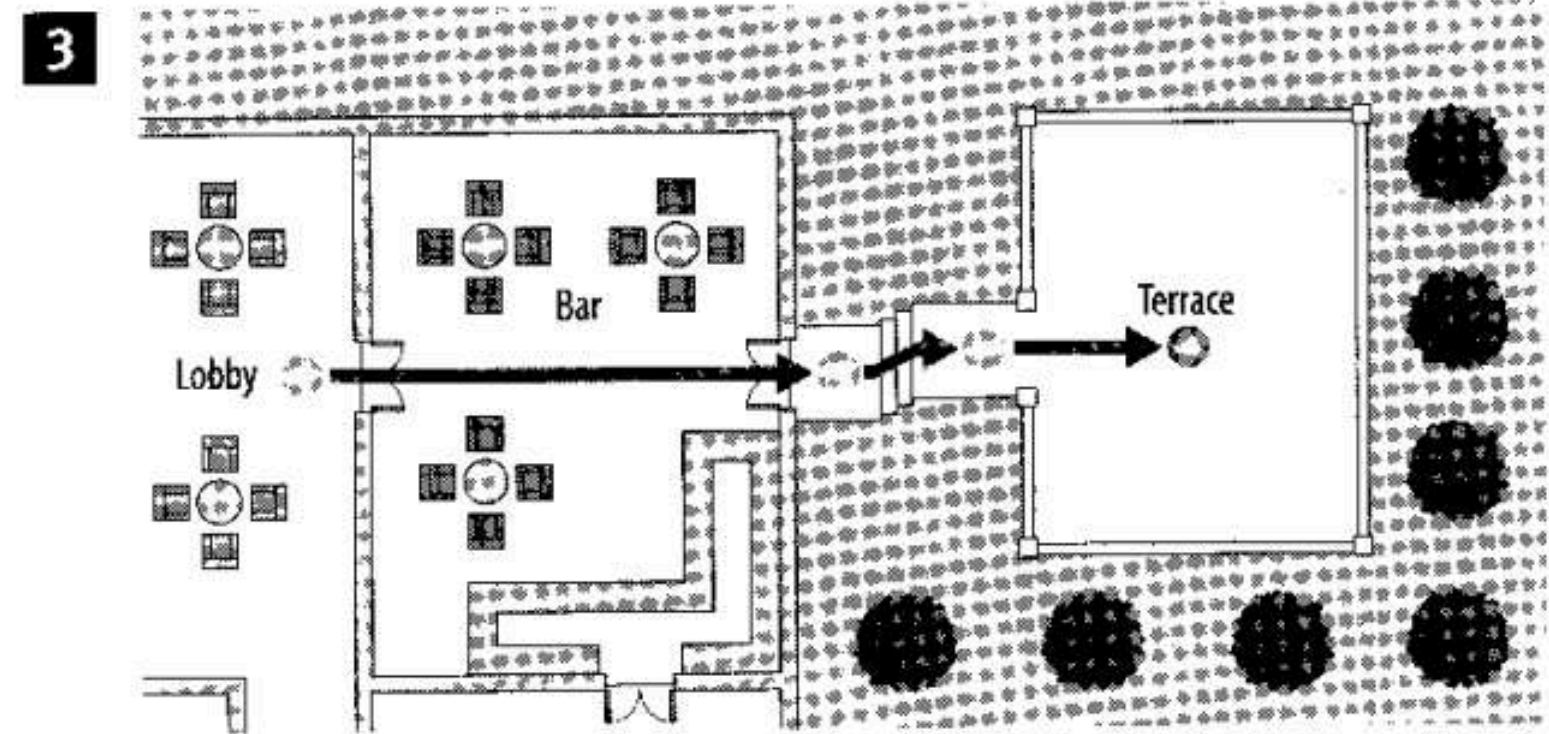
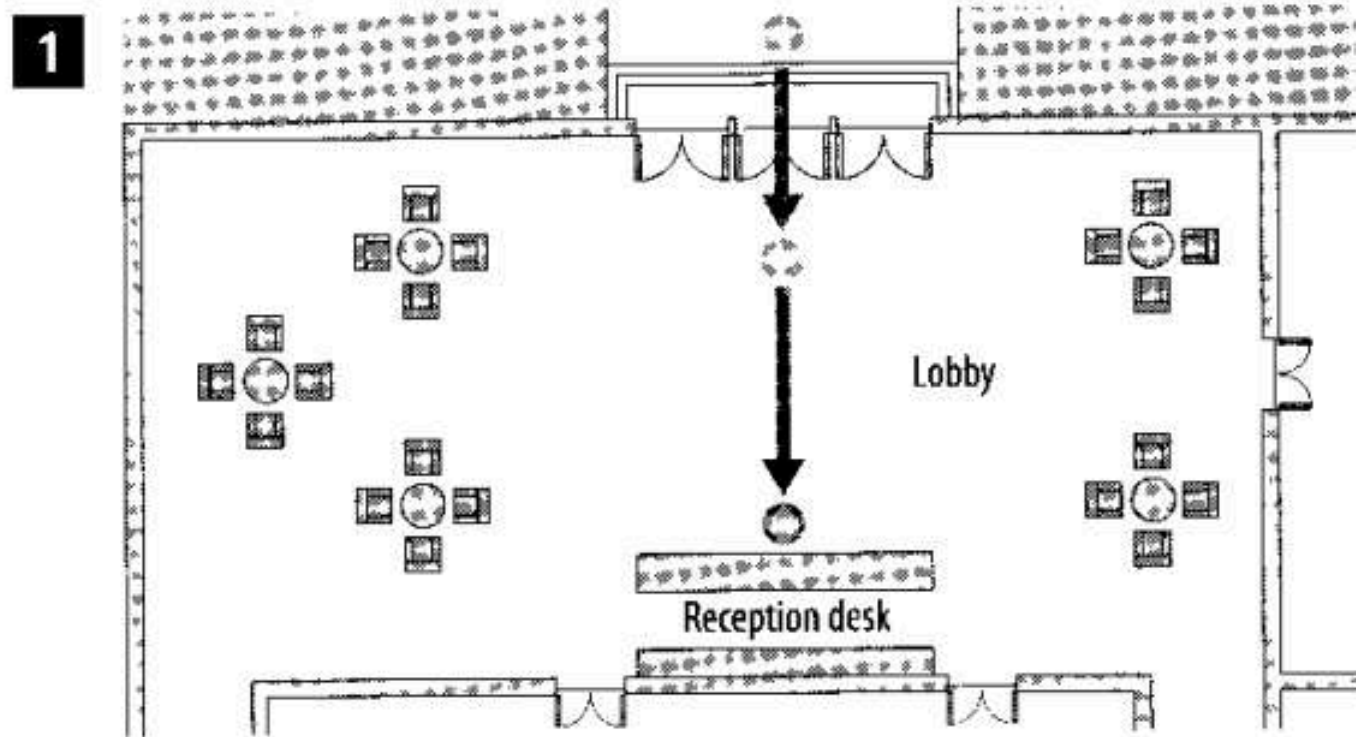
- 1 Go *up/past/down* the restaurant and the lifts are on the left.
- 2 You can walk *down/round/straight on* the hotel to get to the rose garden at the back.
- 3 Walk *round/onto/along* the corridor beside the conference room.
- 4 Follow the signs *onto/up/to* reception.
- 5 When you come to the swimming pool, continue straight *on/past/right* to a green door.
- 6 This door will take you *into/along/up* the fitness centre.
- 7 You can get to the terrace *along/into/through* the conference room.
- 8 As you come *down/across/out of* the hotel, the car park is on your right.

**3** Look at the diagrams. Use the prepositions to complete the directions.

to along up on across *into* past through straight on out of round onto

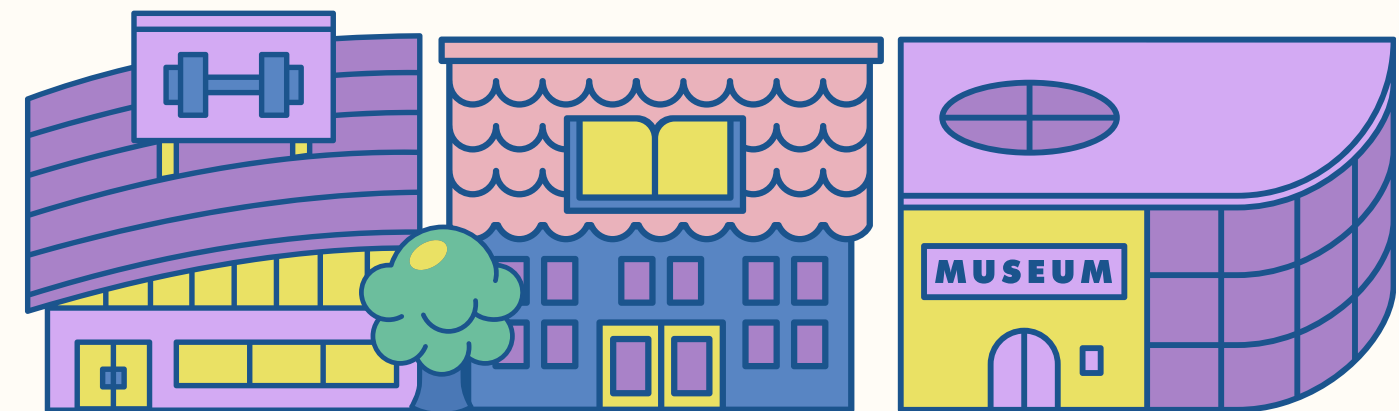
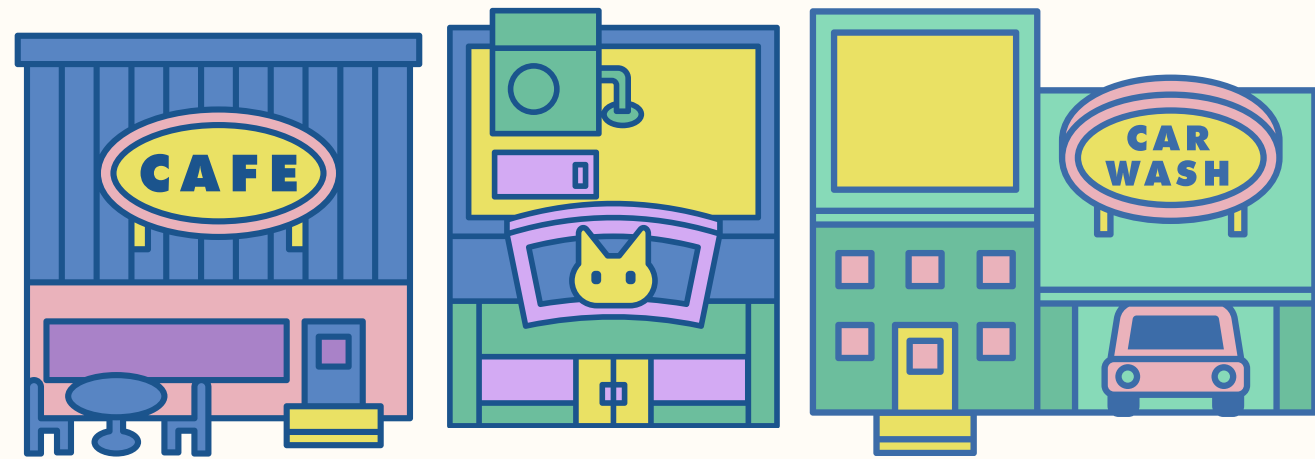
- 1 As you come *into* the hotel, walk ..... the lobby  
 ..... the reception desk.
- 2 To get to the fitness centre from the business centre, walk  
 ..... the shop and restrooms, then continue  
 ..... down the opposite corridor – it's the last  
 door ..... the right.

- 3 From the lobby, you can go ..... the bar,  
 ..... the steps and ..... the terrace.
- 4 As you come ..... the main door, follow  
 the path ..... the front of the building. Go  
 ..... the hotel and you'll see the Golf club in  
 front of you.



# ACTIVITY

-ให้นักศึกษาจับคู่กันแล้ว เลือกทำroleplay ตามโจทย์ต่อไปนี้



A

B

1

Guest: ask the receptionist for directions to the school

Receptionist: give the guest directions

2

Receptionist: give the guest directions

Guest: ask the receptionist for directions to the library

