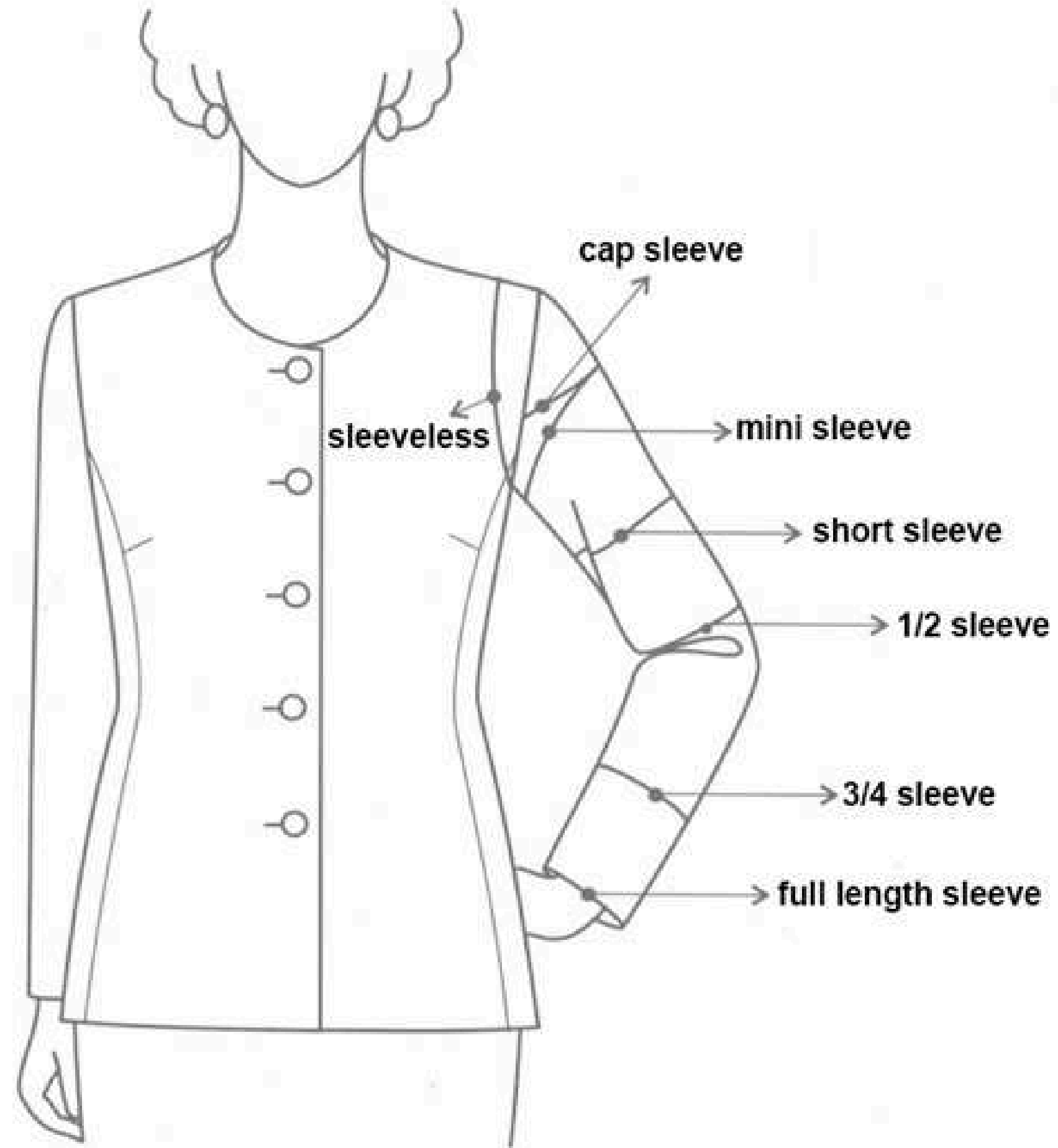


SLEEVE

Types of Sleeve Length

Present by SisterSilk





_petal

Sleeve with a curved overlap along outer arm. Also called lapped sleeve.



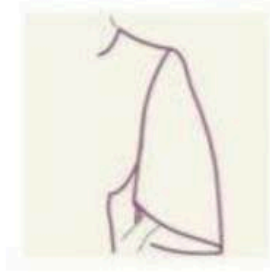
_layered

Wide sleeve that consists of multiple circular layers of fabric overlapping.



_french

Sleeve with wide cuff which turns back and is fastened with a cuff link through all layers.



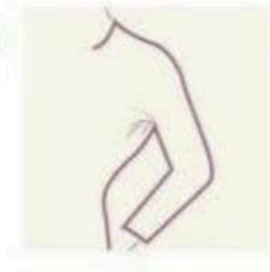
_cape

Cape sleeve is a wide sleeve which has draped fabric over the arm, creating a dramatic effect for the shirt or dress.



_circular cap

Short flaring sleeve that extends out from smooth cap at armhole.



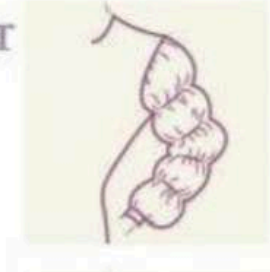
_kimono

Sleeve may be cut in one with the front and back of the garment or may be attached to the front and back with a vertical seam.



_drop shoulder

The sleeve is attached to an armhole shaped to extend wider than the natural shoulder.



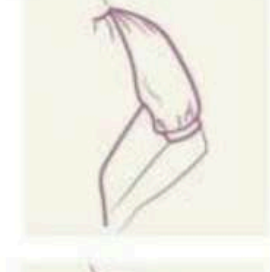
_marie

A full "paned" or "pansied" sleeve gathered into two or more puffs by a ribbon or fabric band above the elbow, worn in the 1620s and 1630s.



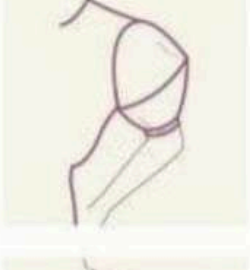
_button-tab

A long roll-up sleeve with a button-tab sewn above the elbow. The sleeve is rolled up and fastened by the tab with a button.



_peasant

A wide taglan sleeve with gathers at the neckline and lower edge. Gathers may be controlled by drawstring or elastic. Sleeve may be short or long.



_lantern

Sleeve made with crosswise design seams to give width.



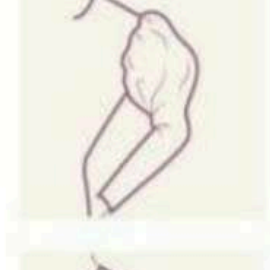
_Juliet

A long, tight sleeve with a puff at the top, inspired by fashions of the Italian Renaissance and named after Shakespeare's tragic heroine.



_roll-up

Straight short or elbow length sleeve designed to be rolled or folded up from a cuff. May be either set-in or shirt sleeve.



_leg of mutton

The leg-of-mutton sleeve is constructed with a full top that is gathered into the armhole. The fabric then tapers gradually to tuck in closely at the wrist, which gives the sleeve this particular outline.



_cowl

Short and loose sleeve with draping at armhole.



_butterfly

A set-in sleeve that is smooth at the armhole and widely flared at the hem edge (elbow length or longer).

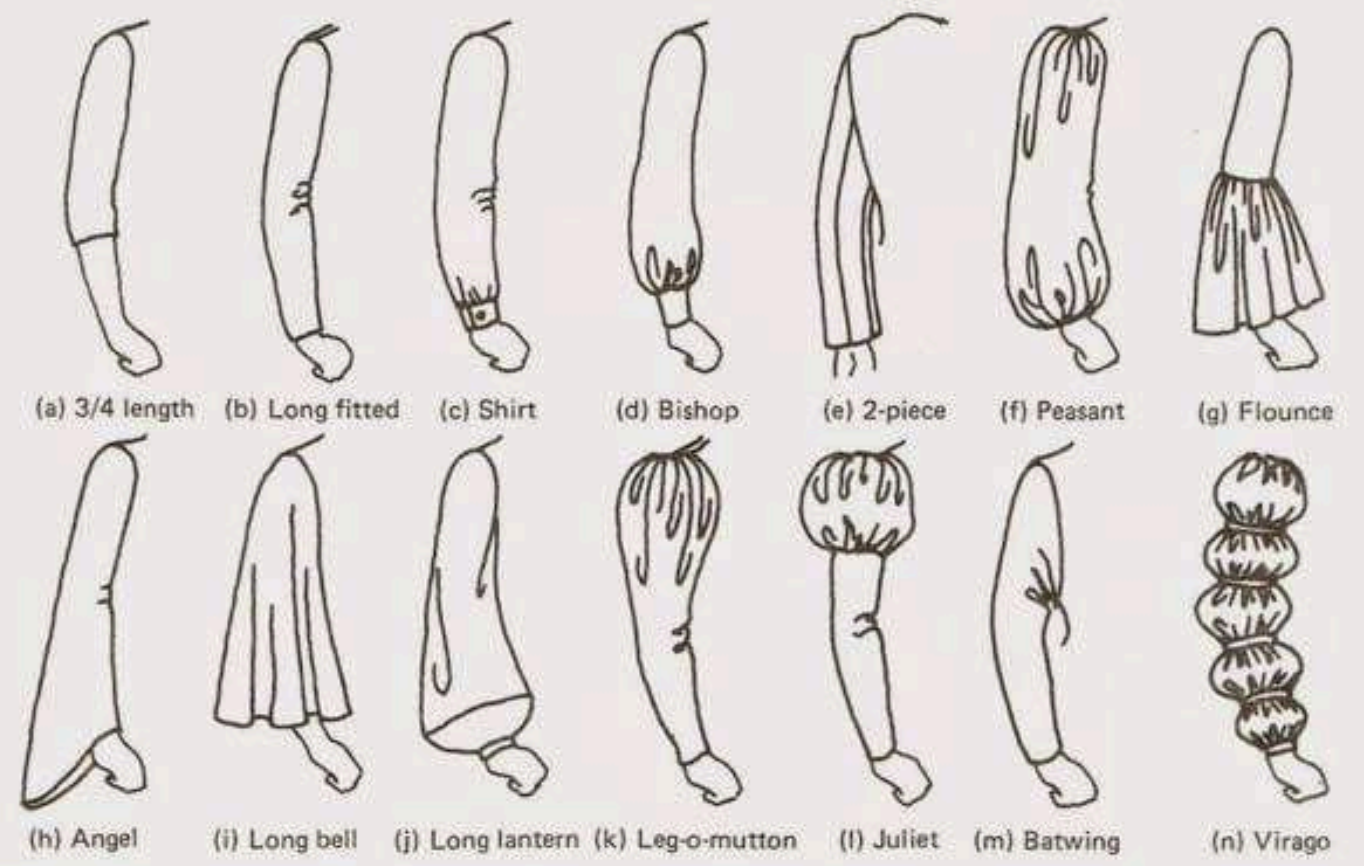


FIGURE 6-27 Long, set-in sleeve styles.



FIGURE 6-28 Cuff styles.

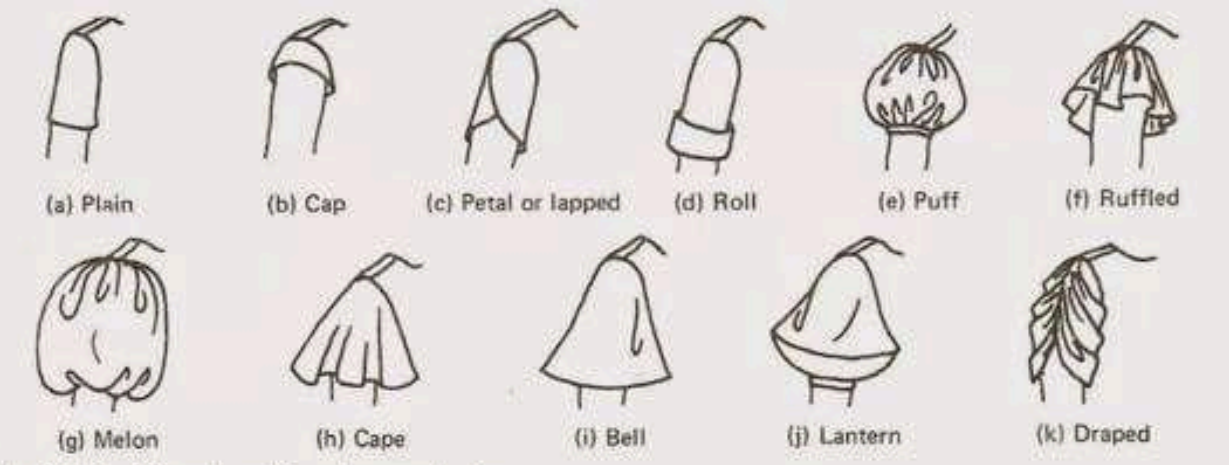
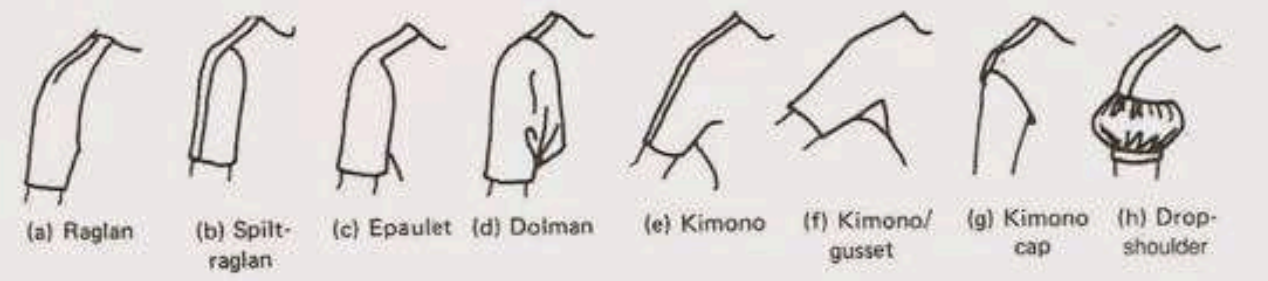


FIGURE 6-29 Short, set-in sleeve styles.



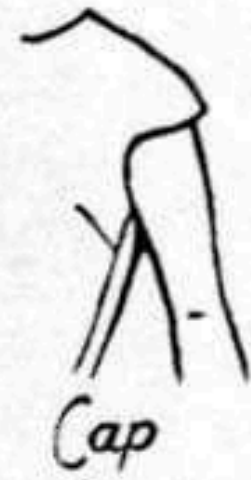
Sleeves



Sleeveless



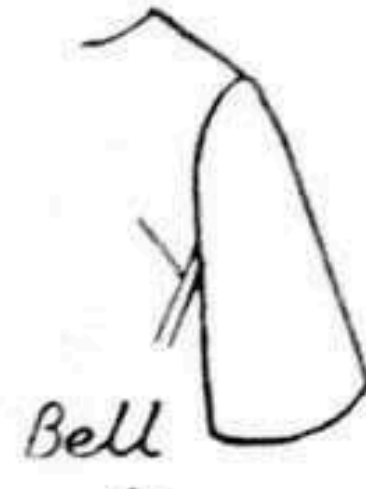
Short



Cap



Puffed



Bell



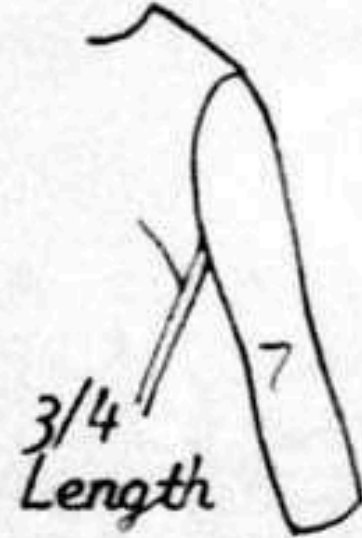
Leg of Mutton



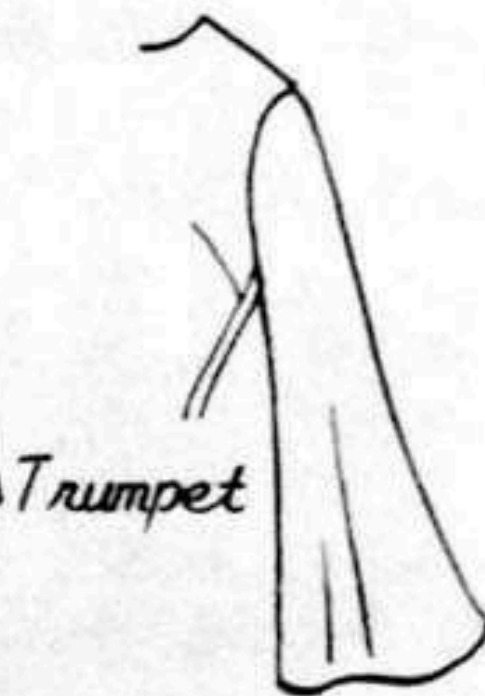
Circular Flounce



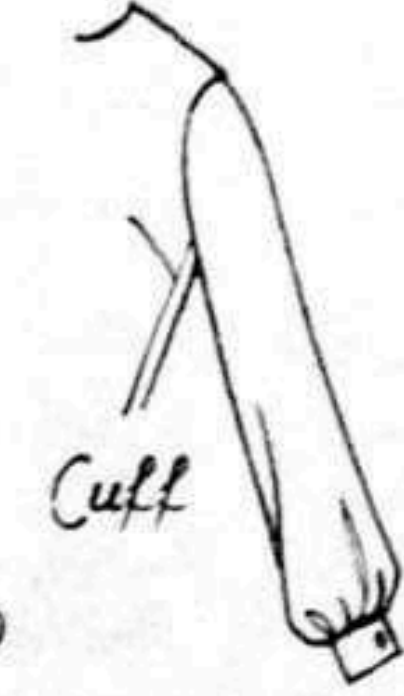
Raglan



3/4 Length



Trumpet



Cuff



Long



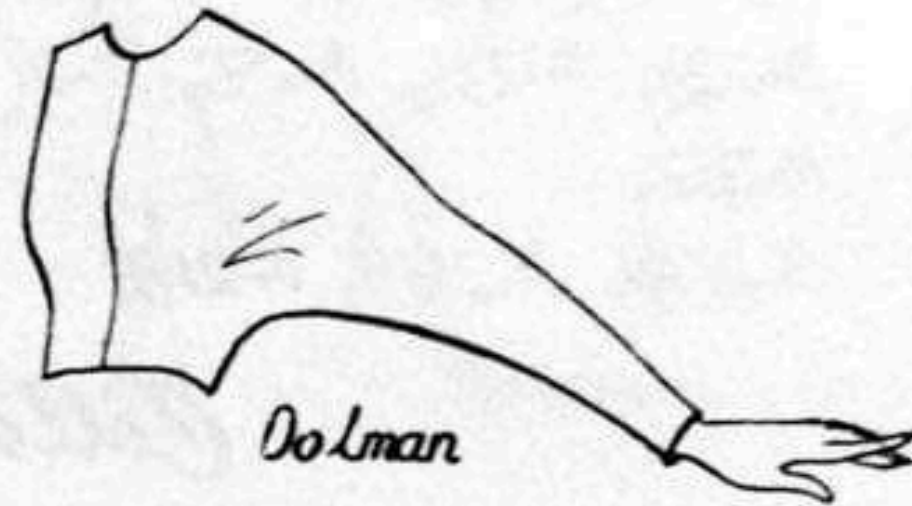
Bishop



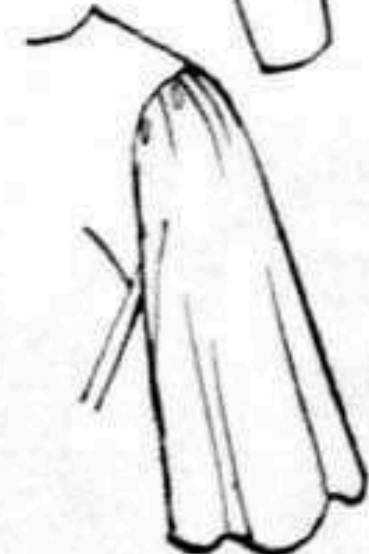
Angel



Kimono



Dolman



Choir Boy

Sleeves



1



2



3



4



5



6



7



8



9



10



11

TYPES OF SLEEVES

FROM

MAD ABOUT SLEEVES



BELL



PEASANT



TRUMPET



PUFF



LANTERN



TIERED



TULIP



FLUTTER



BALLOON



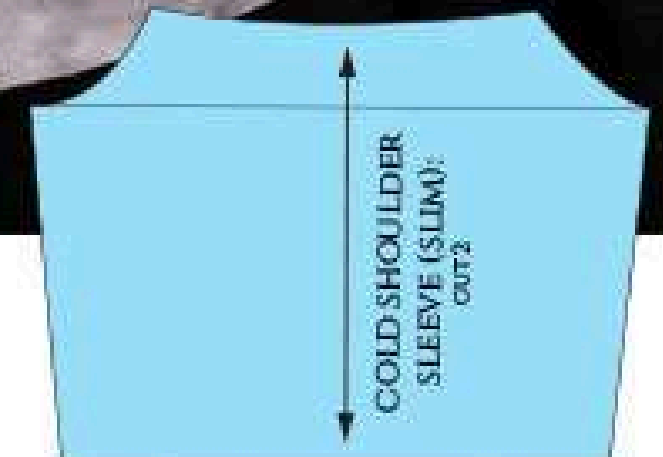
LEG O' MUTTON

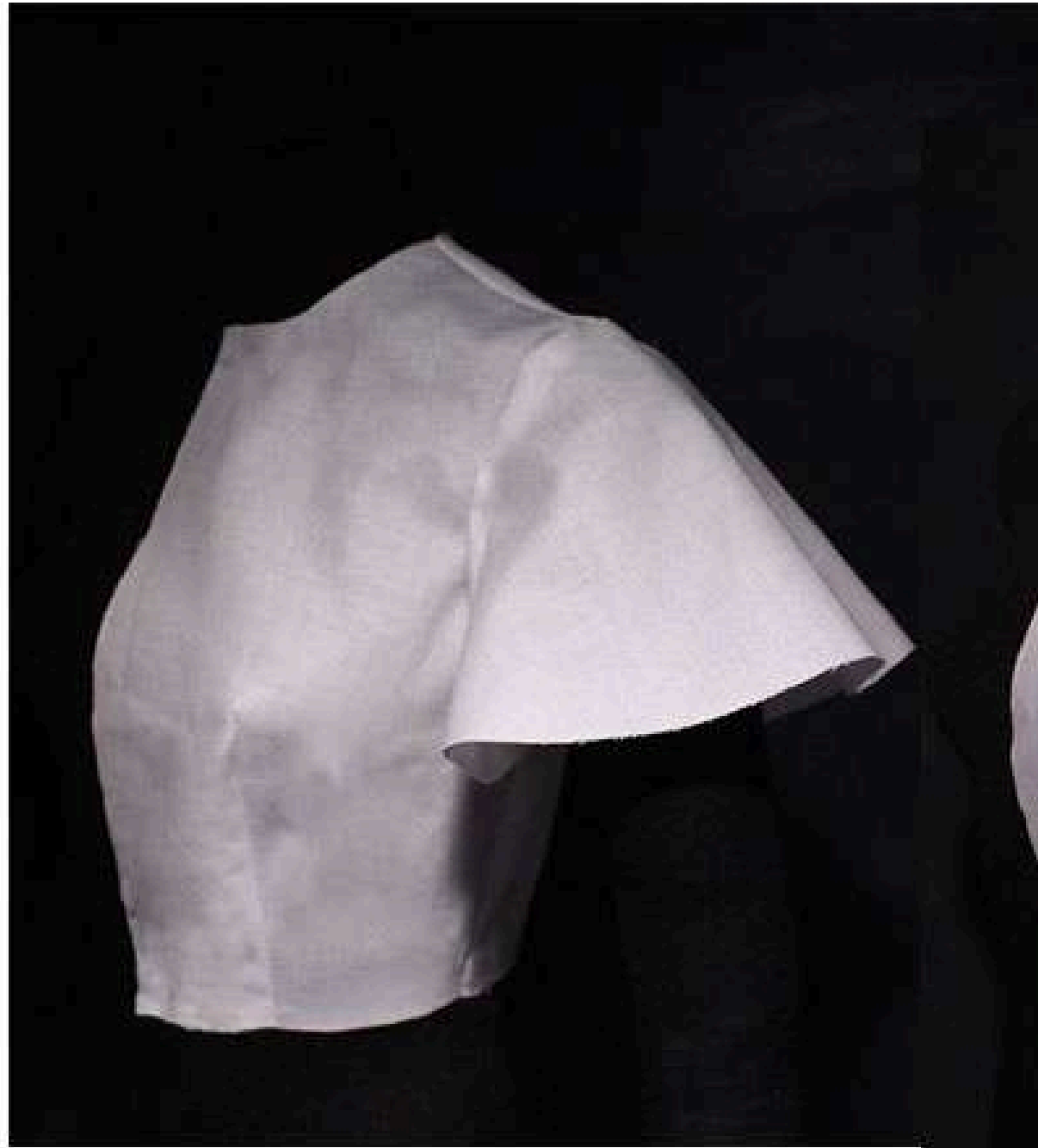


BISHOP



COWL









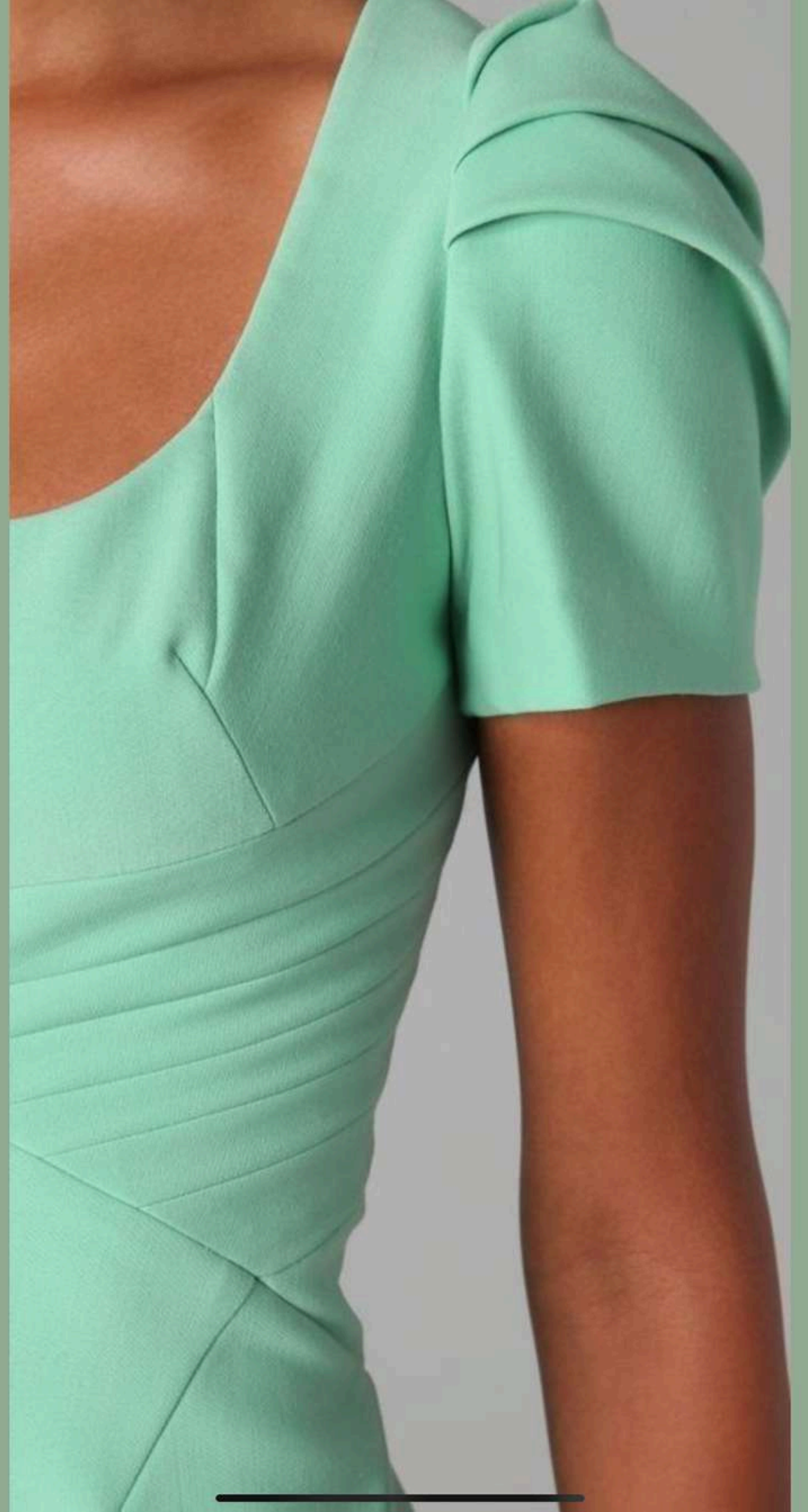




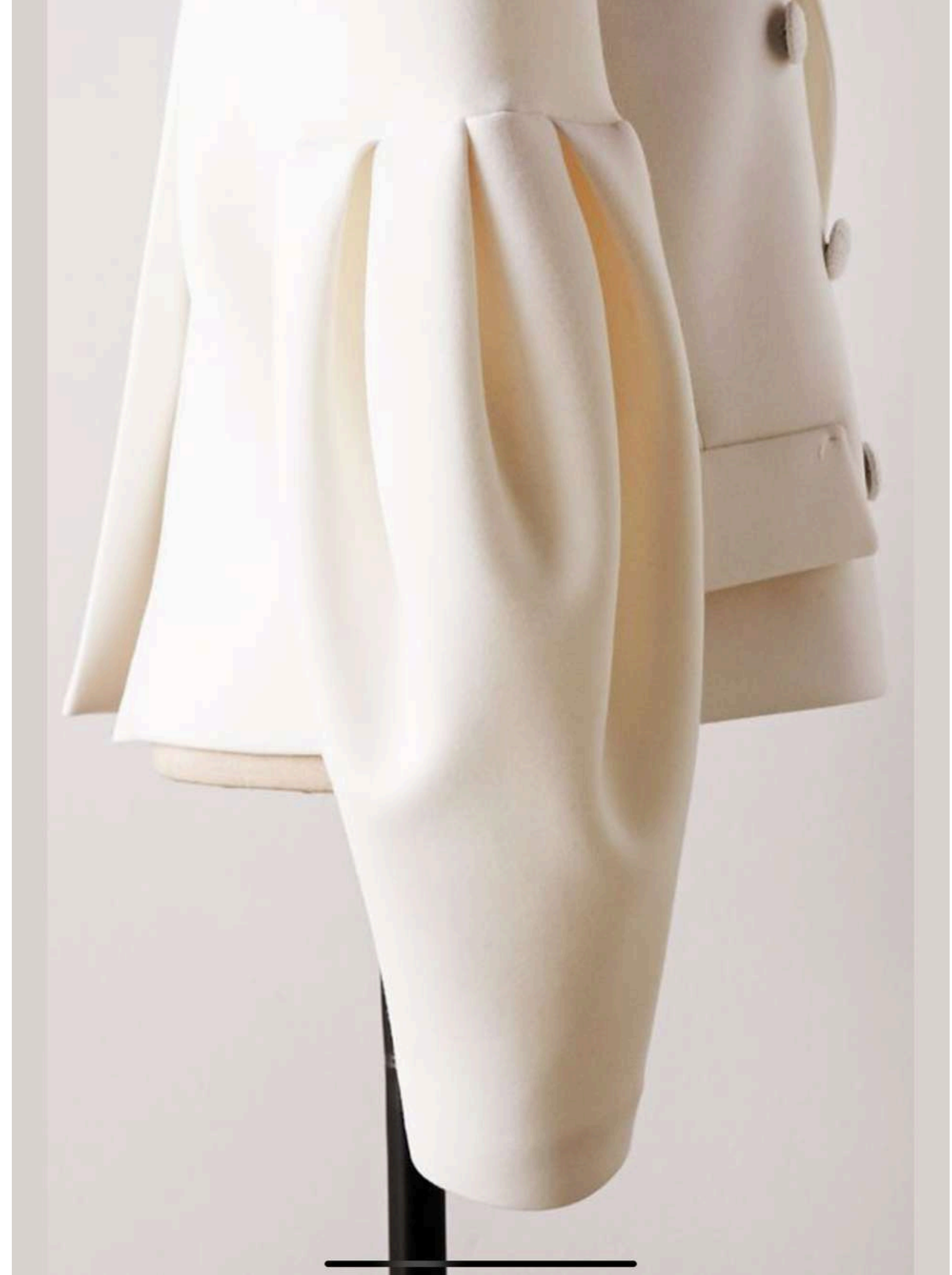
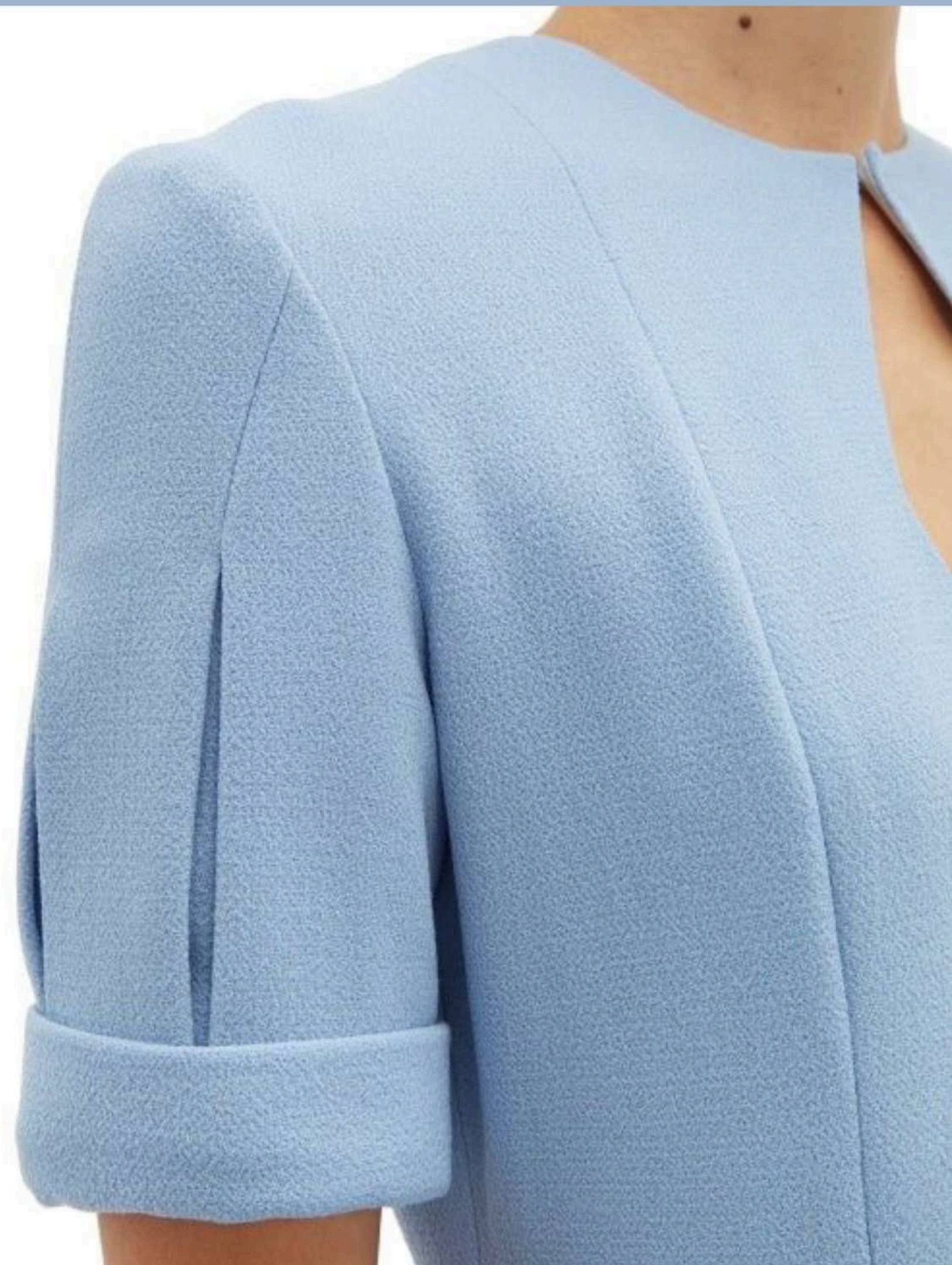










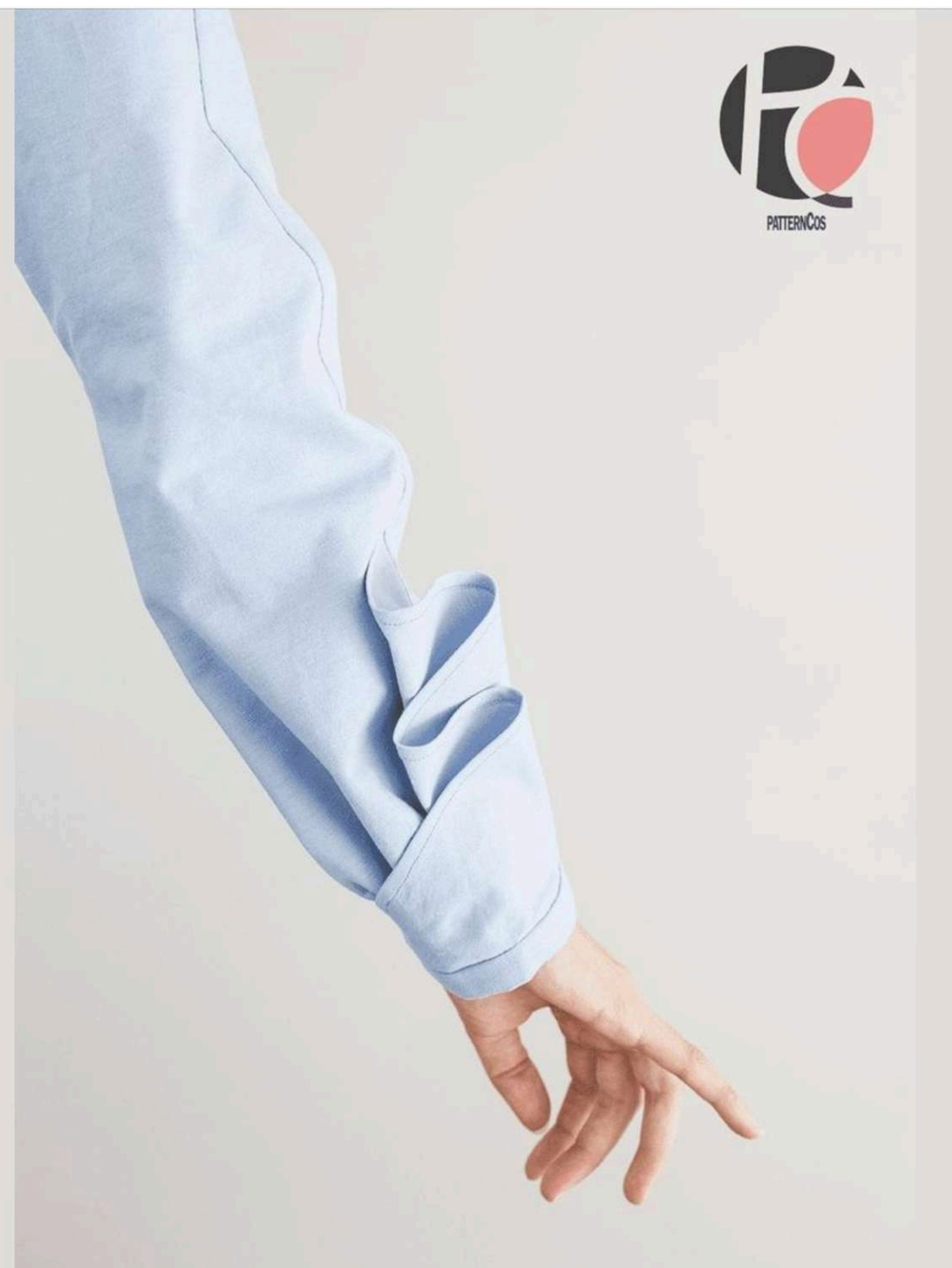
















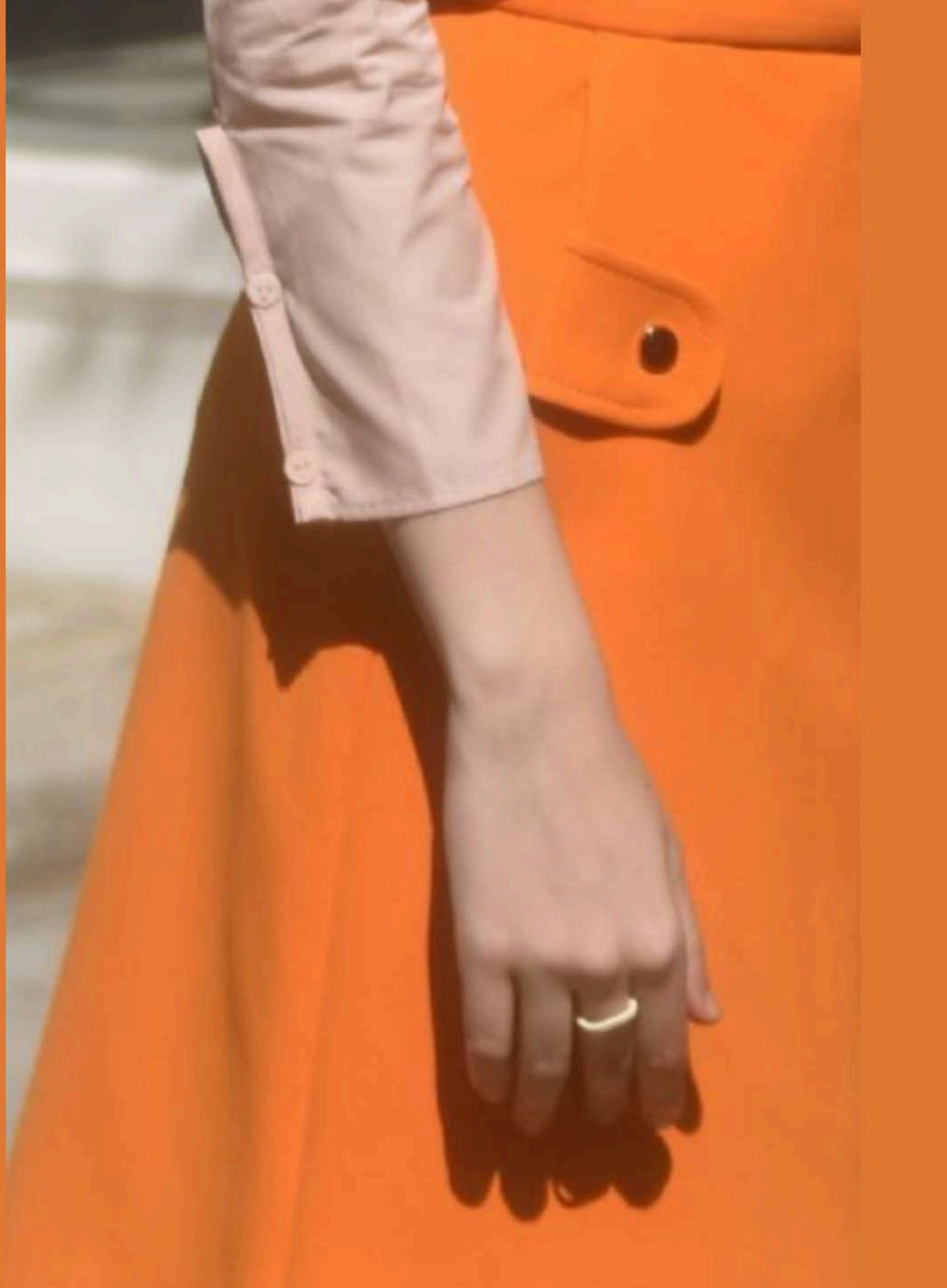






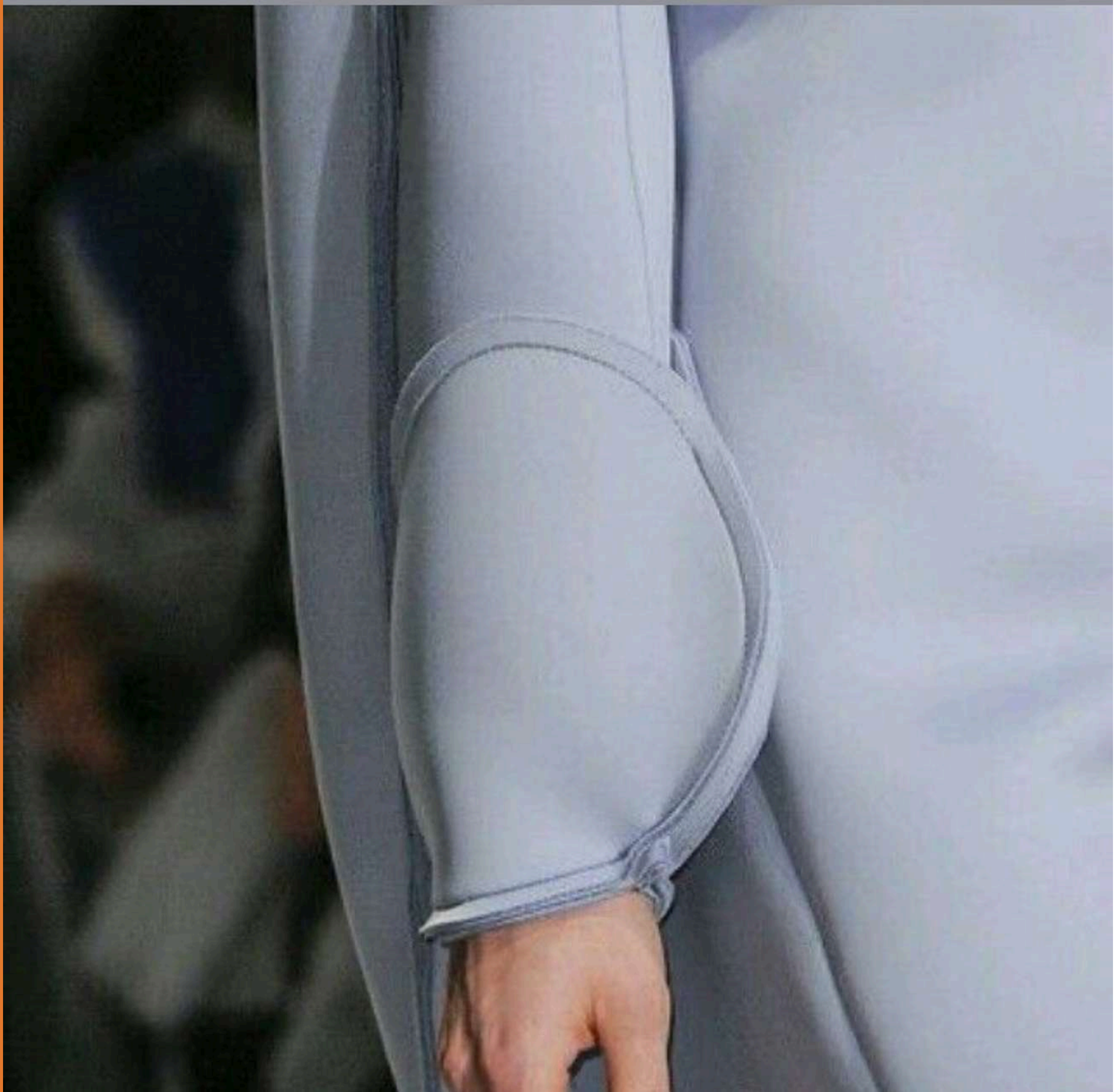












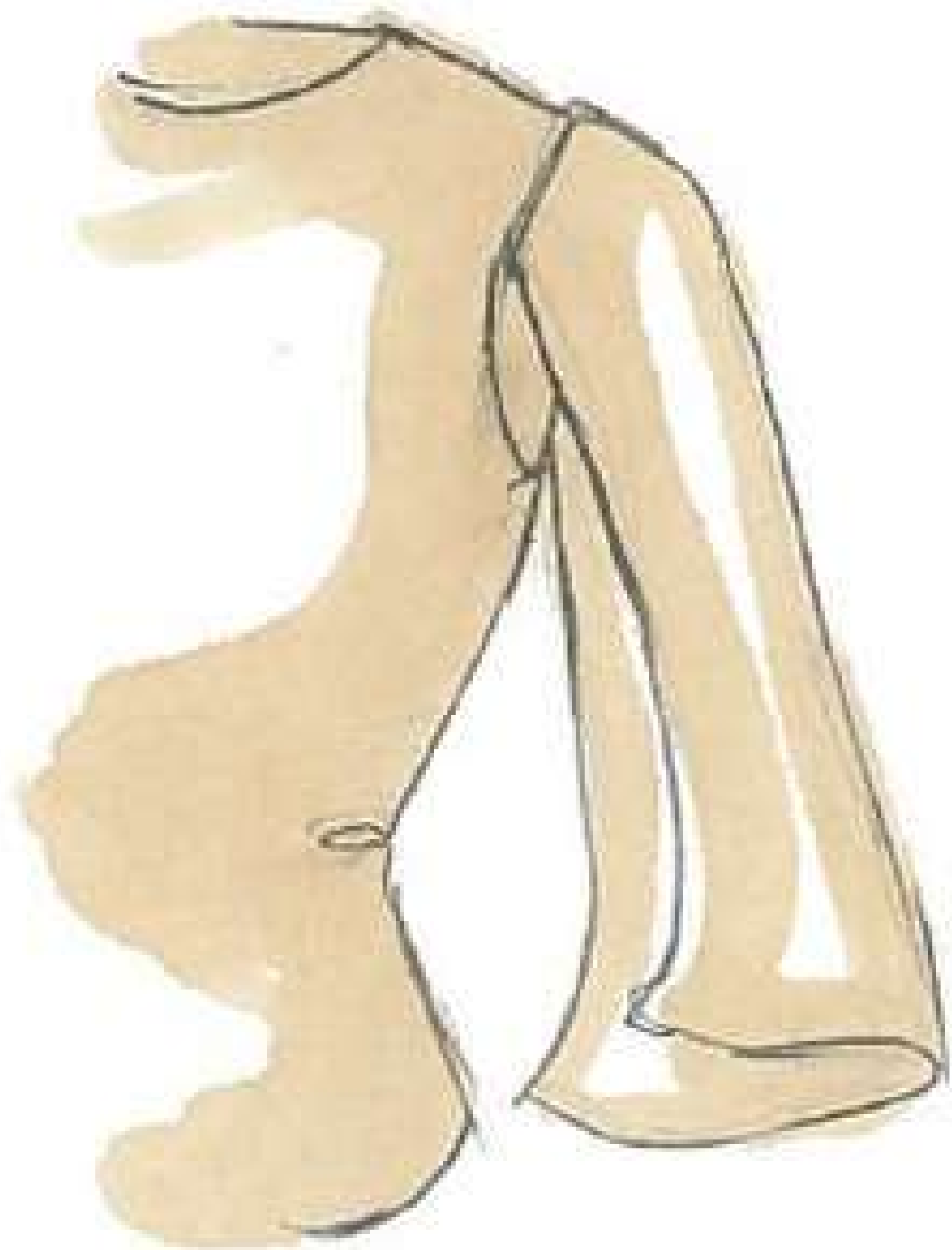














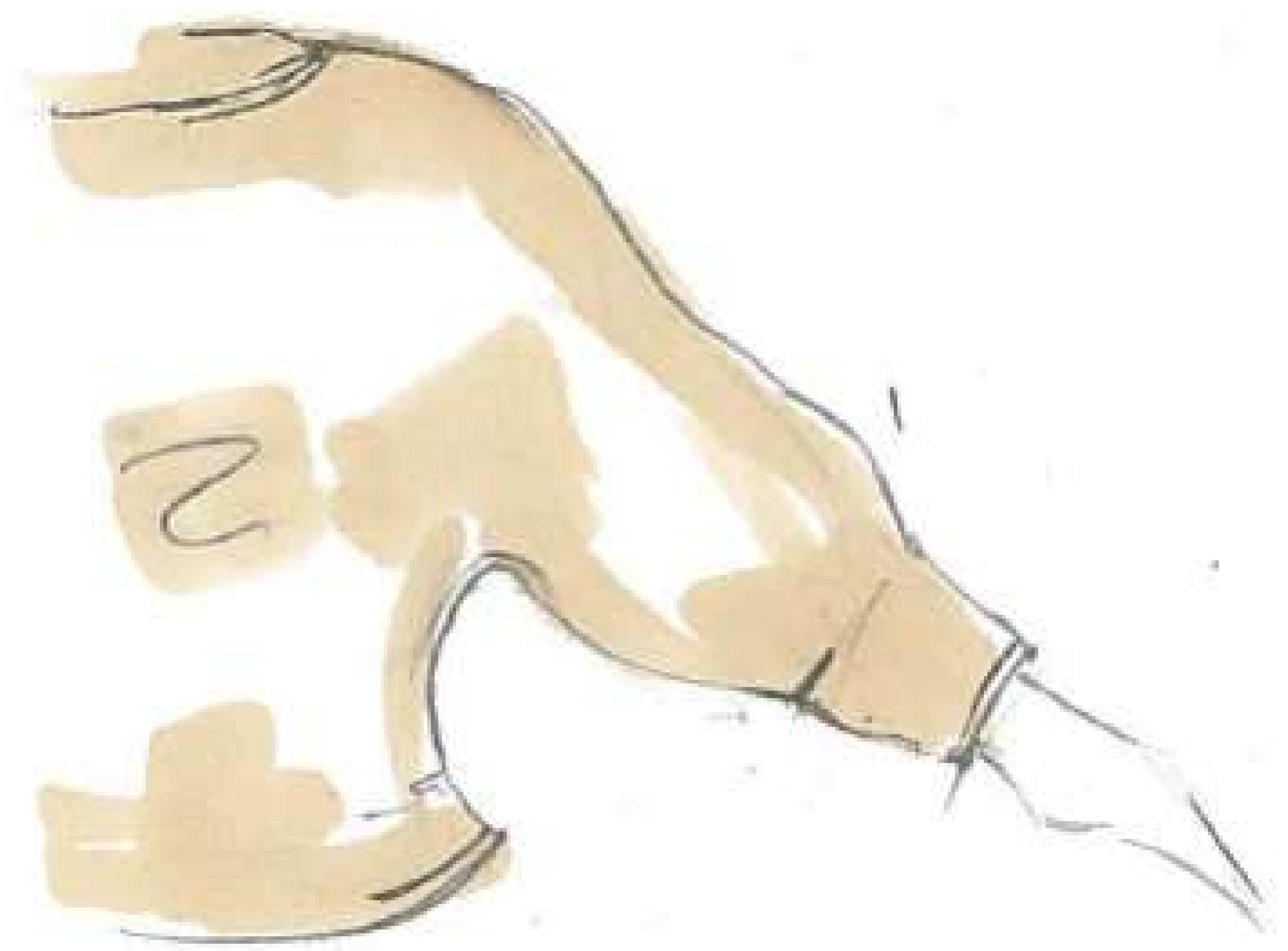


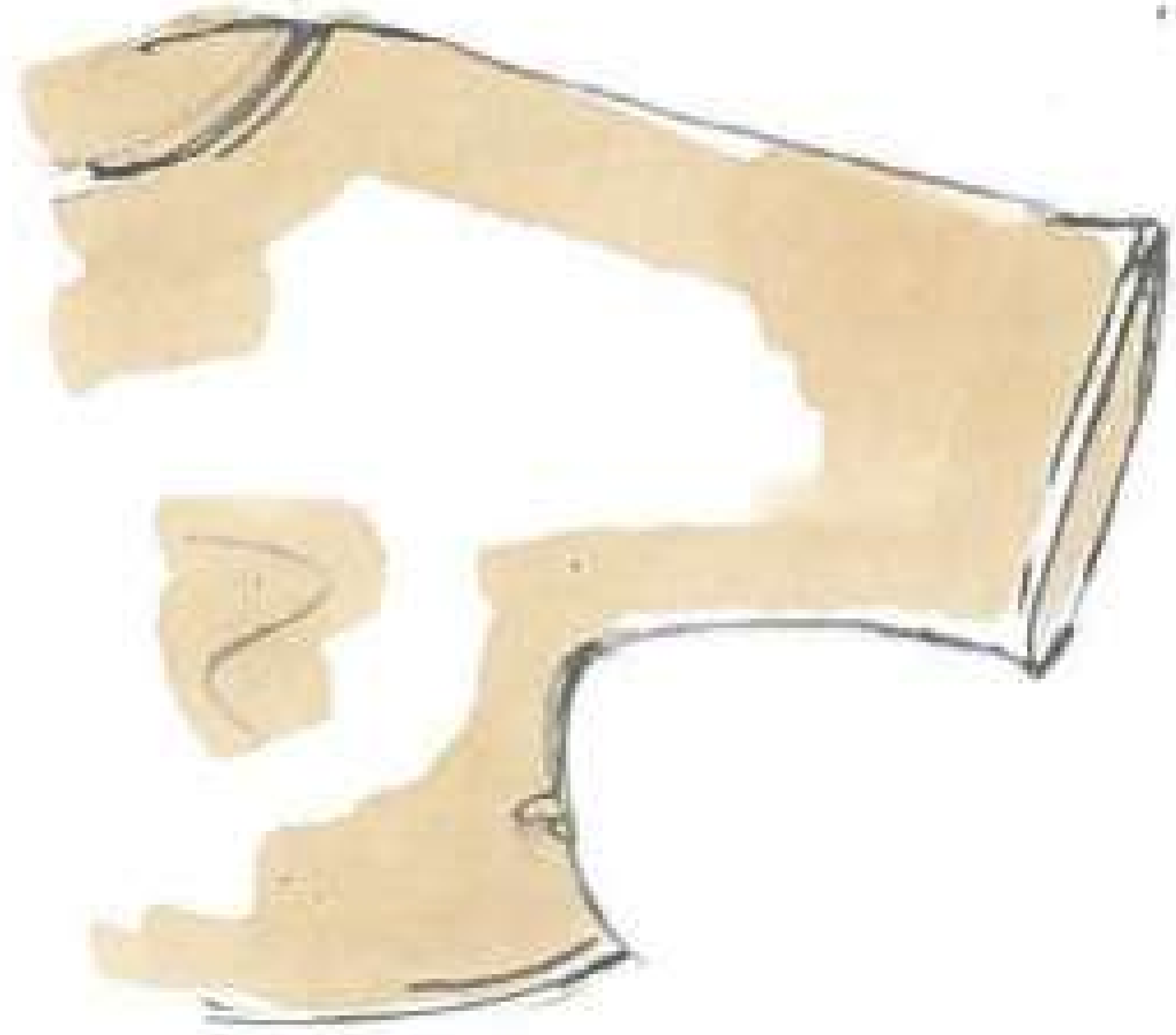


100
100
100

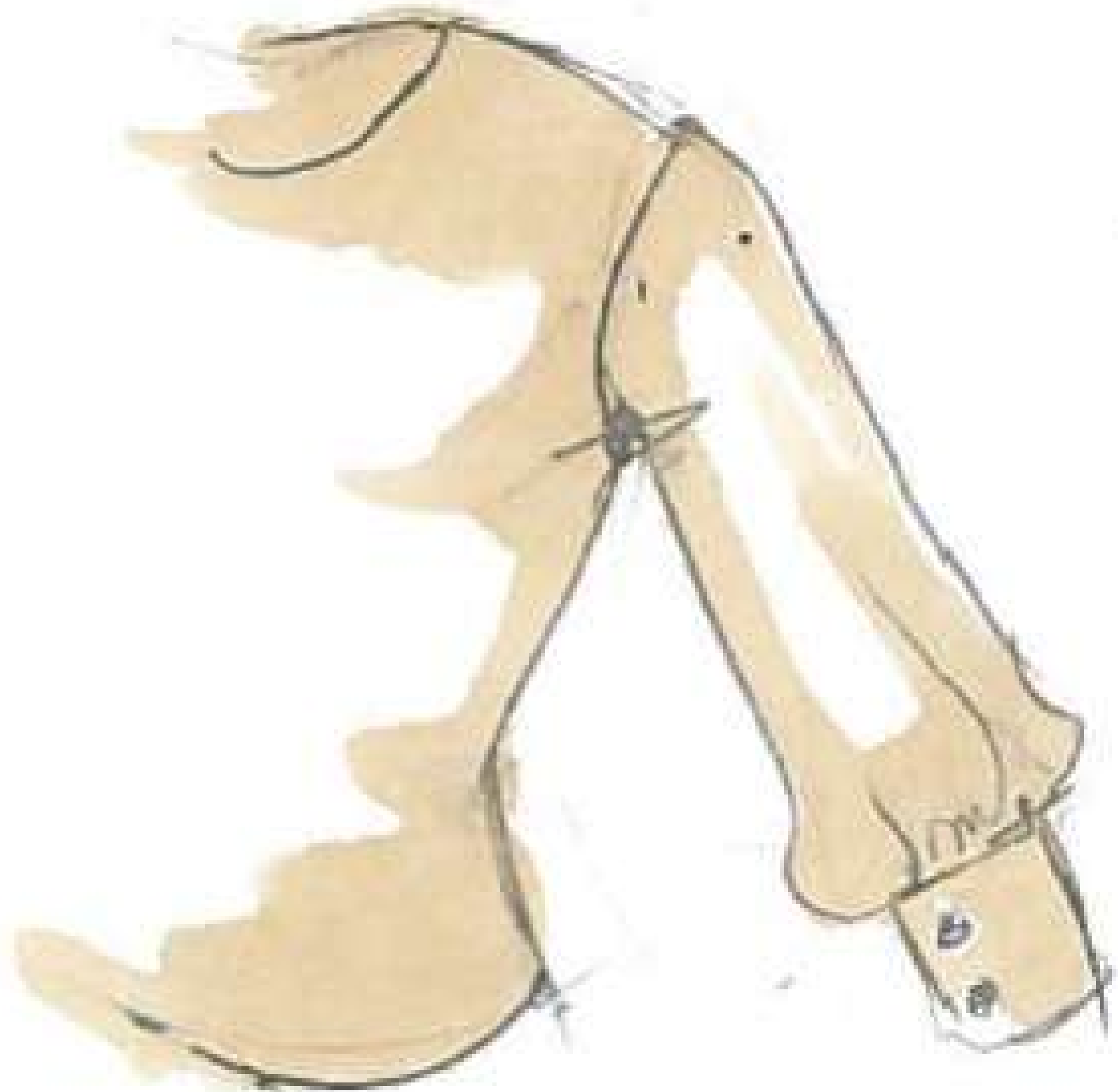




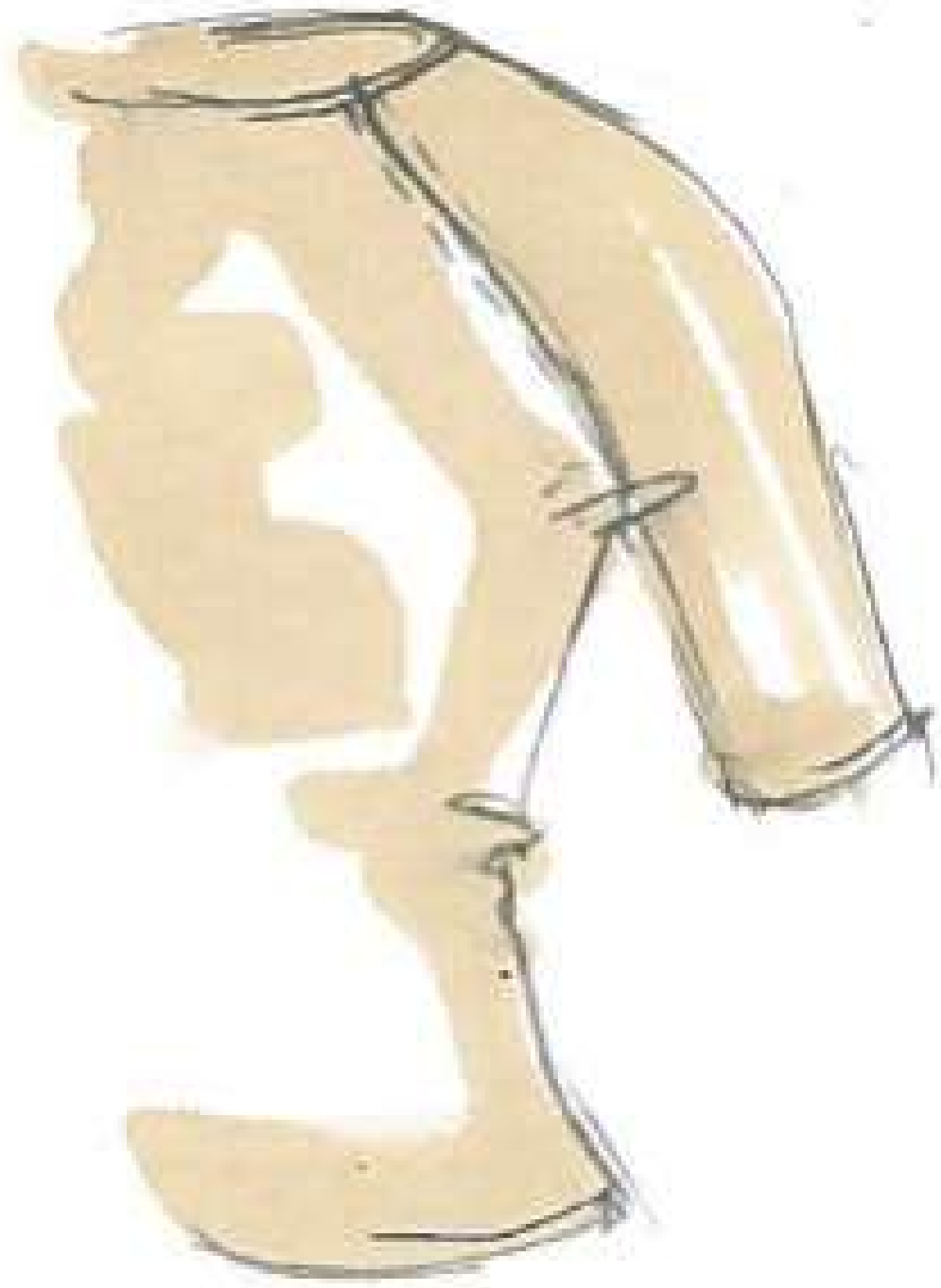




















111



